

VOR or TACAN RWY 32

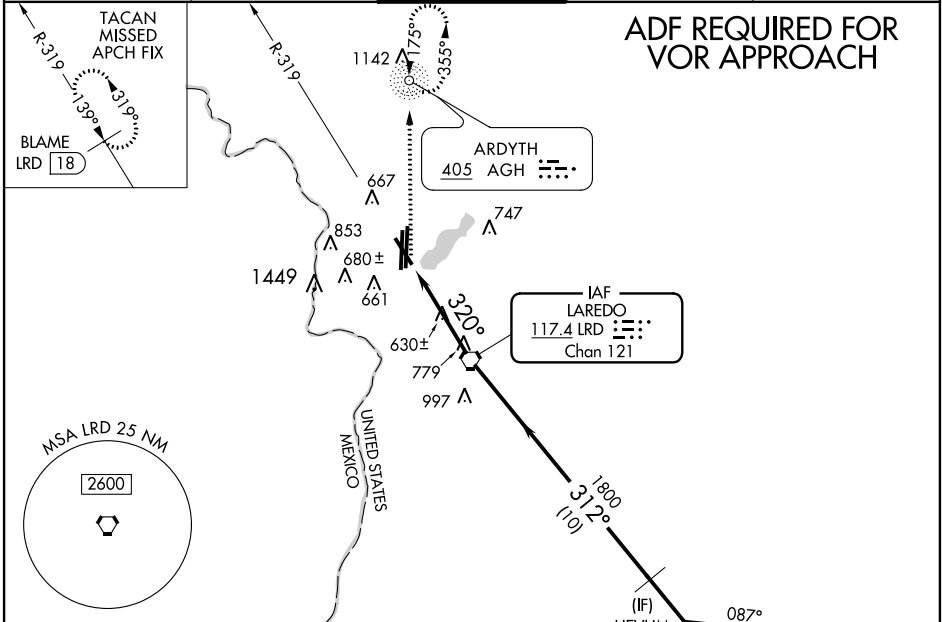
LAREDO INTL (L.R.D)

VORTAC LRD 117.4 Chan 121	APP CRS 320°	Rwy Idg TDZE 494 Apt Elev 508	5928
----------------------------------------	------------------------	---------------------------------------------------	-------------

▼ When local altimeter setting not received, use Hebbronville altimeter setting and increase all MDAs 120 feet, Cat C and E visibility 1/4 mile, Cat D 1/2 mile and circling Cat D visibility 1/4 mile and Cat E 1/2 mile. Circling NA west of Rwy 14 and 35L. Visibility reduction by helicopters NA.

MISSED APPROACH: Climb to 2500 direct AGH NDB and hold. (TACAN aircraft climb to 2600 via LRD VORTAC R-319 to BLAME/18 DME and hold NW, left turn, 139° inbound.)

ATIS 125.775	HOUSTON CENTER 127.8 307.2	LAREDO TOWER * 120.1 (CTAF) 257.9	GND CON 121.8	UNICOM 122.95
------------------------	--------------------------------------	---------------------------------------------	-------------------------	-------------------------

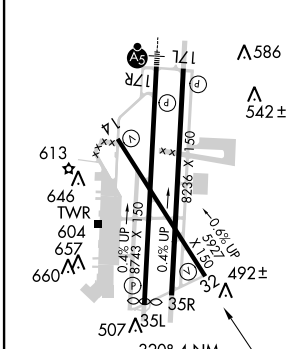


ADF REQUIRED FOR VOR APPROACH

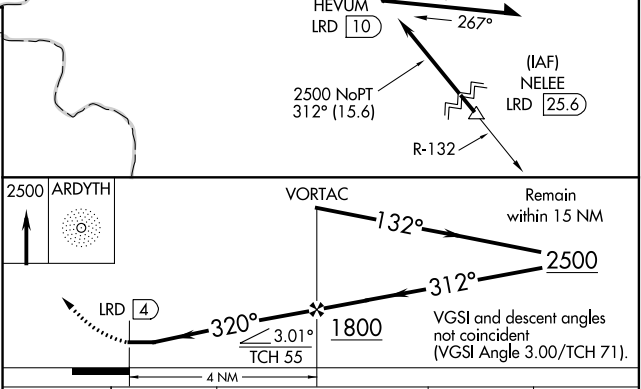
SC-3, 07 FEB 2013 to 07 MAR 2013

SC-3, 07 FEB 2013 to 07 MAR 2013

ELEV 508	D	TDZE 494
----------	----------	----------



FAF to MAP 4 NM					
Knots	60	90	120	150	180
Min:Sec	4:00	2:40	2:00	1:36	1:20



CATEGORY	A	B	C	D	E
S-32	900-1	406 (400-1)	900-1 1/4	406 (400-1 1/4)	900-1 1/2
CIRCLING	960-1	980-1	980-1 1/2	1060-2	1240-2 1/2
	452 (500-1)	472 (500-1)	472 (500-1 1/2)	552 (600-2)	732 (800-2 1/2)