

WAAS Ch 82599 W17A	APP CRS 175°	Rwy Idg 8743 THRE 504 Apt Elev 508
--	------------------------	---

RNAV (GPS) RWY 17R

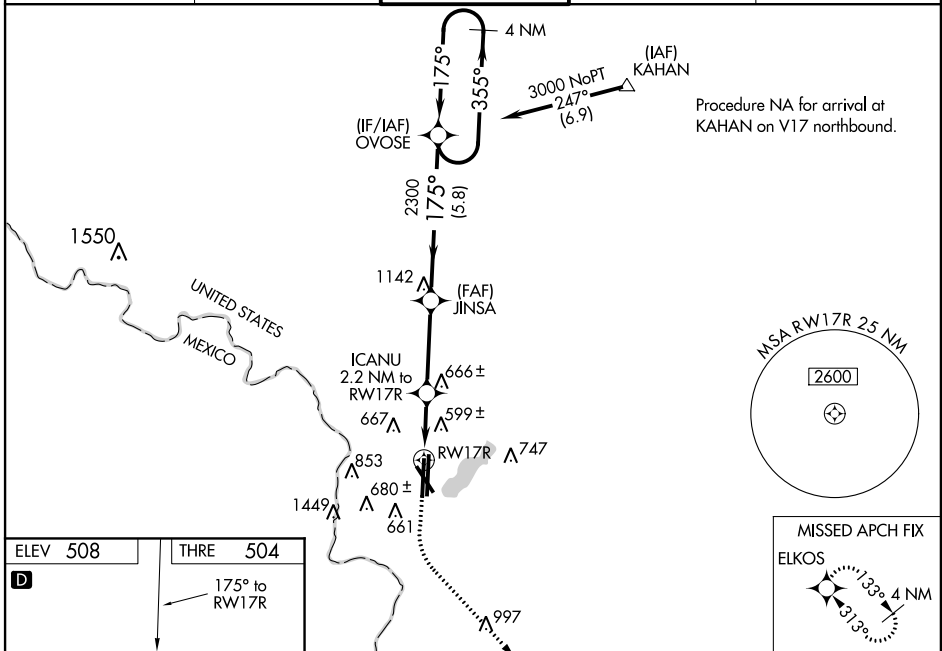
LAREDO INTL (L.R.D)

⚠ For uncompensated Baro-VNAV systems, LNAV/VNAV NA below -16°C (4°F) or above 40°C (104°F). Circling NA West of Rwy 14 and 35L. DME/DME RNP-0.3 NA. When local altimeter setting not received, use Hebbbronville altimeter setting and increase all DA 115 feet and all MDA 120 feet, increase visibility LNAV/VNAV all Cats 3/8 mile, LNAV Cats C/D/E 1/4 mile, Circling Cats C/D 1/4 mile and Cat E 1/2 mile. For inoperative MALSR, increase LPV Cat E visibility to 3/4, increase LNAV/VNAV all Cats to 1/4, increase LNAV Cats C/D/E to 13/8. For inoperative MALSR when using Hebbbronville altimeter setting, increase LPV all Cats visibility to 1, increase LNAV/VNAV all Cats to 13/8, increase LNAV Cat E to 13/4. Baro-VNAV and VDP NA when using Hebbbronville altimeter setting.

MALSR
⦿

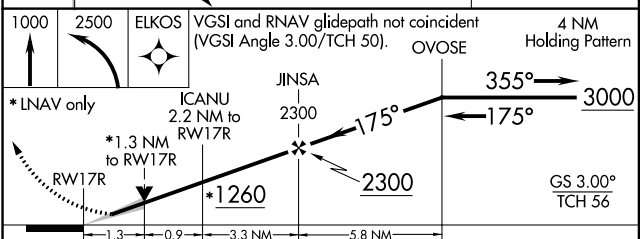
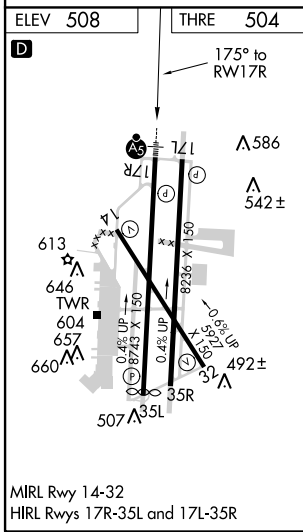
MISSED APPROACH:
Climb to 1000 then climbing left turn to 2500 direct ELKOS and hold.

ATIS 125.775	HOUSTON CENTER 127.8 307.2	LAREDO TOWER ★ 120.10 (CTAF) 257.9	GND CON 121.8	UNICOM 122.95
------------------------	--------------------------------------	--	-------------------------	-------------------------



SC-3, 07 FEB 2013 to 07 MAR 2013

SC-3, 07 FEB 2013 to 07 MAR 2013



CATEGORY	A	B	C	D	E
LPV DA	704-1/2 200 (200-1/2)				
LNAV/VNAV DA	896-7/8 392 (400-7/8)				
LNAV MDA	980-1/2 476 (500-1/2)		980-1 476 (500-1)		
CIRCLING	980-1 472 (500-1)		980-1 1/2 472 (500-1 1/2)	1060-2 552 (600-2)	1240-2 1/2 732 (800-2 1/2)