

LAREDO, TEXAS

AL-226 (FAA)

# RNAV (GPS) RWY 17L

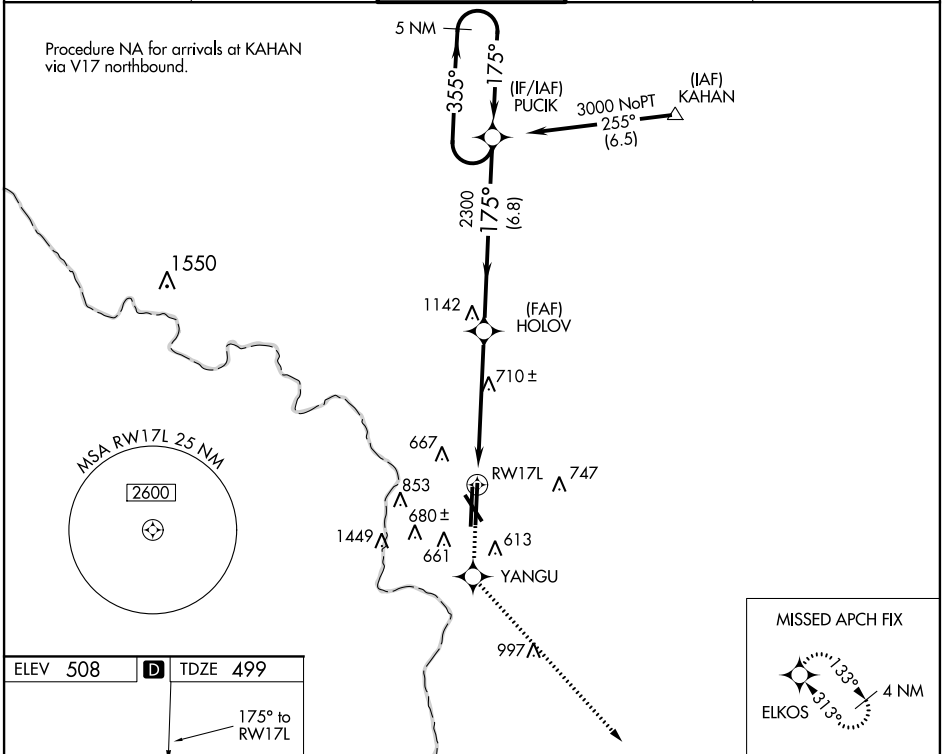
LAREDO INTL (L.R.D)

WAAS Ch <b>77899</b> <b>W17B</b>	APP CRS <b>175°</b>	Rwy Idg TDZE <b>499</b> Apt Elev <b>508</b>	<b>8236</b> <b>499</b> <b>508</b>
--	------------------------	---	---

MISSED APPROACH: Climb to 2500 direct YANGU and via 130° track to ELKOS and hold.

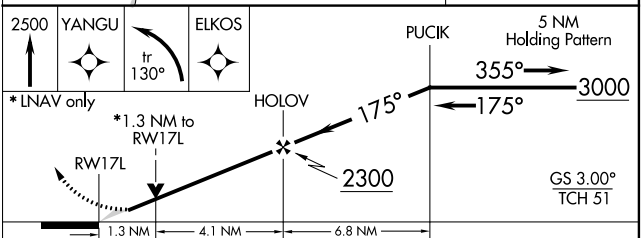
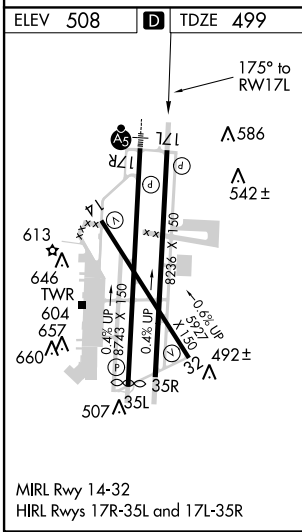
<b>T</b> DME/DME RNP-0.3 NA. BARO-VNAV NA below -16°C (4°F). <b>W</b> Circling NA west of runways 14 and 35L.	ATIS <b>125.775</b>	HOUSTON CENTER <b>127.8 307.2</b>	<b>LAREDO TOWER * 120.10 (CTAF) 257.9</b>	GND CON <b>121.8</b>	UNICOM <b>122.95</b>
--	------------------------	--------------------------------------	---	-------------------------	-------------------------

Procedure NA for arrivals at KAHAN via V17 northbound.



SC-3, 07 FEB 2013 to 07 MAR 2013

SC-3, 07 FEB 2013 to 07 MAR 2013



CATEGORY	A	B	C	D	E
LPV DA	749- <sup>3</sup> / <sub>4</sub> 250 (300- <sup>3</sup> / <sub>4</sub> )				
LNAV/VNAV DA	954-1 <sup>1</sup> / <sub>2</sub> 455 (500-1 <sup>1</sup> / <sub>2</sub> )				
LNAV MDA	960-1	461 (500-1)	960-1 <sup>1</sup> / <sub>4</sub> 461 (500-1 <sup>1</sup> / <sub>4</sub> )	960-1 <sup>1</sup> / <sub>2</sub> 461 (500-1 <sup>1</sup> / <sub>2</sub> )	960-1 <sup>3</sup> / <sub>4</sub> 461 (500-1 <sup>3</sup> / <sub>4</sub> )
CIRCLING	960-1 <sup>1</sup> / <sub>2</sub> 452 (500-1 <sup>1</sup> / <sub>2</sub> )	980-1 <sup>1</sup> / <sub>2</sub> 472 (500-1 <sup>1</sup> / <sub>2</sub> )	1060-2 552 (600-2)	1240-2 <sup>1</sup> / <sub>2</sub> 732 (800-2 <sup>1</sup> / <sub>2</sub> )	

LAREDO, TEXAS  
Orig-A 12040

27°33'N-99°28'W

# RNAV (GPS) RWY 17L