

RNAV (GPS) RWY 14

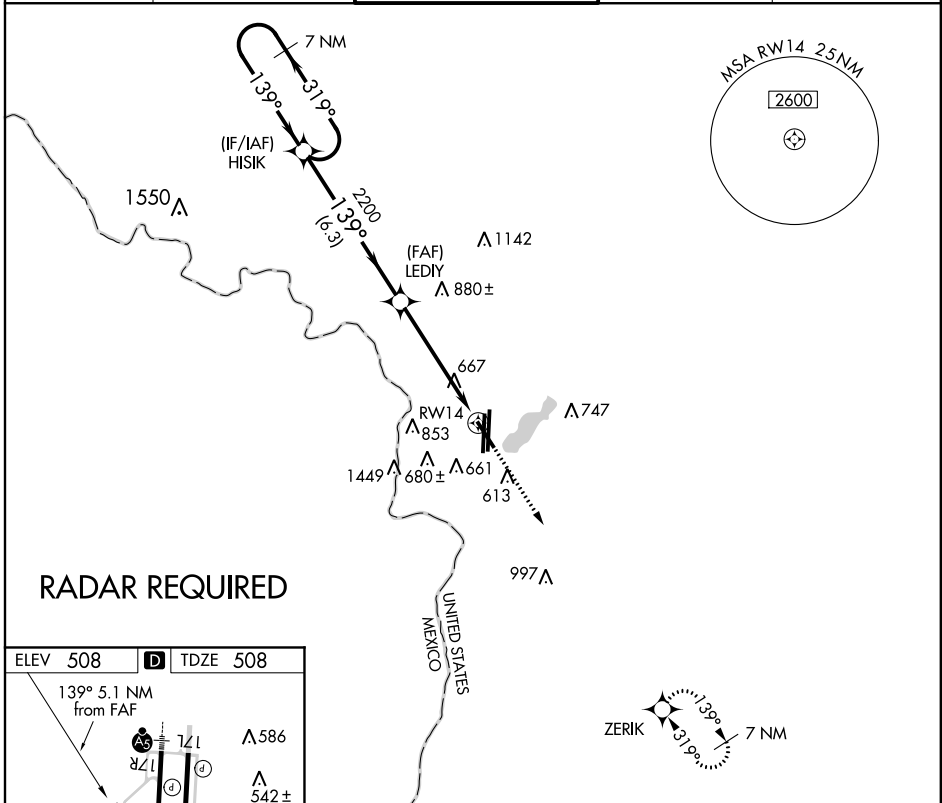
LAREDO INTL (L.R.D)

APP CRS 139°	Rwy Idg 5928
	TDZE 508
	Apt Elev 508

▽ DME/DME RNP-0.3 NA. Circling not authorized west of Rwsy 14 and 35L.

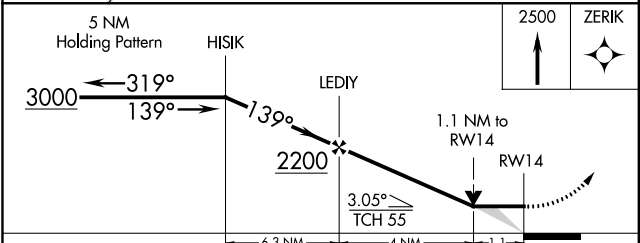
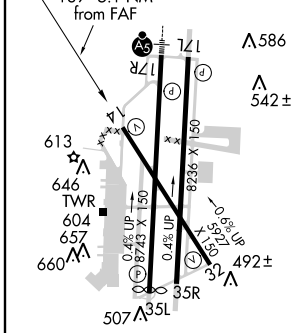
▲ MISSED APPROACH: Climb to 2500 direct ZERIK and hold.

ATIS 125.775	HOUSTON CENTER 127.8 307.2	LAREDO TOWER * 120.1 (CTAF) 257.9	GND CON 121.8	UNICOM 122.95
------------------------	--------------------------------------	--	-------------------------	-------------------------



RADAR REQUIRED

ELEV 508	D	TDZE 508
----------	----------	----------



CATEGORY	A	B	C	D	E
LNAV MDA	920-1	412 (500-1)	920-1¼	412 (500-1¼)	920-1½ 412 (500-1½)
CIRCLING	960-1 452 (500-1)	980-1 472 (500-1)	980-1½ 472 (500-1½)	1060-2 552 (600-2)	1240-2½ 732 (800-2½)

MIRL Rwy 14-32
HIRL Rwsy 17R-35L and 17L-35R

SC-3, 07 FEB 2013 to 07 MAR 2013

SC-3, 07 FEB 2013 to 07 MAR 2013