

NDB AGH 405	APP CRS 173°	Rwy ldg TDZE Apt Elev	8236 499 508
-----------------------	------------------------	-----------------------------	---

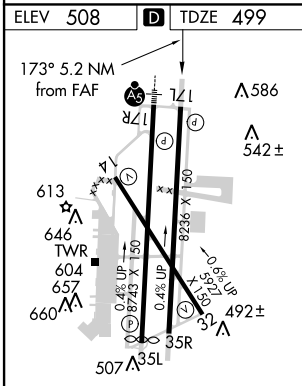
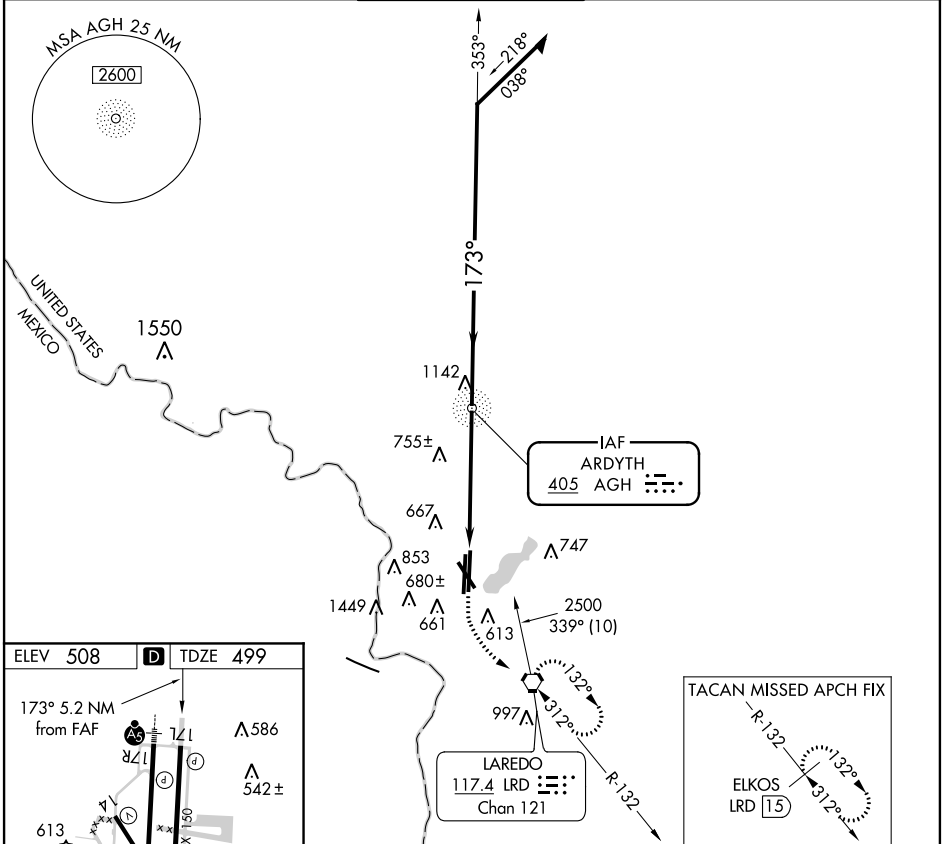
NDB RWY 17L

LAREDO INTL (L.R.D)

⚠ Circling not authorized west of Rwy 14 and 35L.

⚠ MISSED APPROACH: Climb to 1200 then climbing left turn to 2500 direct LRD VORTAC and hold, continue climb-in-hold to 2500. (TACAN aircraft continue via LRD R-132 to ELKOS/LRD 15 DME and hold SE, right turn, 312° inbound.)

ATIS 125.775	HOUSTON CENTER 127.8 307.2	LAREDO TOWER * 120.1(CTAF) 0 257.9	GND CON 121.8	UNICOM 122.95
------------------------	--------------------------------------	--	-------------------------	-------------------------



1200	2500	LRD	TACAN ONLY	NDB	Remain within 15 NM
↑	↶	⬡	↑ ELKOS LRD 15	↘ 353°	↖ 173° 2300
				↖ 3.20° TCH 51	↖ 2300
				5.2 NM	

CATEGORY	A	B	C	D	E
S-17L	1060-1	561 (600-1)	1060-1½ 561 (600-1½)	1060-1¾ 561 (600-1¾)	1060-2 561 (600-2)
CIRCLING	1060-1	552 (600-1)	1060-1½ 552 (600-1½)	1060-2 552 (600-2)	1240-2½ 732 (800-2½)

SC-3, 07 FEB 2013 to 07 MAR 2013

SC-3, 07 FEB 2013 to 07 MAR 2013