

LOC/DME I-LRD	APP CRS	Rwy Idg	17R	17L
111.9	175°	THRE	8743	8236
Chan 56		Apt Elev	504	499
			508	508

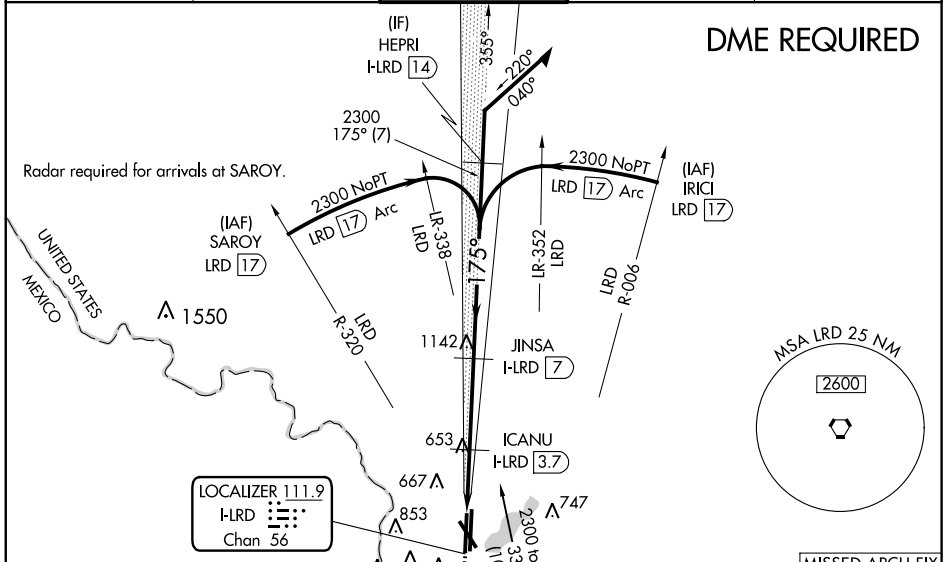
ILS or LOC/DME RWY 17R

LAREDO INTL (L.R.D)

▼ Circling NA west of Rwy 14 and 35L. When local altimeter setting not received, use Hebronville altimeter setting and increase all DA 115 feet and all MDA 120 feet, increase S-LOC 17R Cats C/D/E visibility ¼ mile, increase Circling Cat B visibility ¼ mile, Cat C visibility ⅓ mile, Cats D/E visibility ½ mile, increase sidestep 17L Cat C visibility ¼ mile and Cats D/E visibility ½ mile. For inoperative MALS, increase S-ILS 17R Cat E visibility to ¾ and increase S-LOC 17R Cats C/D/E visibility to 1/8. For inoperative MALS when using Hebronville altimeter setting, increase S-ILS 17R all Cats visibility to 1.

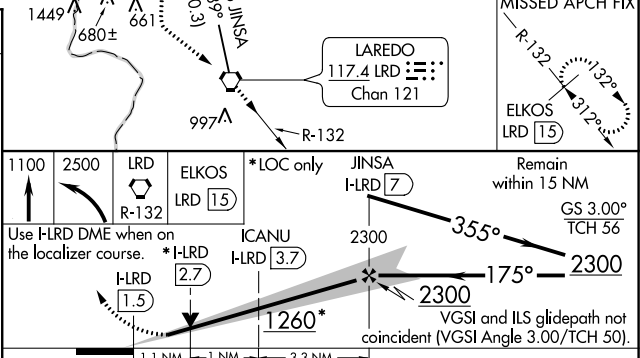
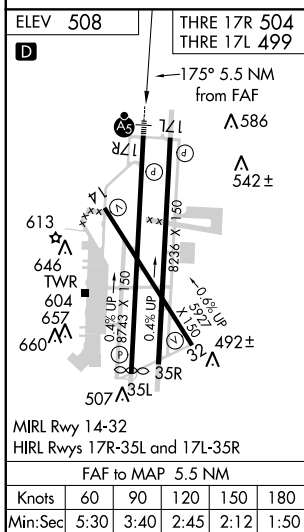
MALS
 MISSED APPROACH: Climb to 1100 then climbing left turn to 2500 direct LRD VORTAC and LRD VORTAC R-132 to ELKOS/LRD 15 DME and hold.

ATIS 125.775	HOUSTON CENTER 127.8 307.2	LAREDO TOWER ★ 120.10 (CTAF) 257.9	GND CON 121.8	UNICOM 122.95
------------------------	--------------------------------------	--	-------------------------	-------------------------



SC-3, 07 FEB 2013 to 07 MAR 2013

SC-3, 07 FEB 2013 to 07 MAR 2013



CATEGORY	A	B	C	D	E
S-ILS 17R		704-½	200 (200-½)		
S-LOC 17R	920-½	416 (500-½)	920-¾	416 (500-¾)	
SIDESTEP RWY 17L	1140-1	641 (700-1)	1140-1⅞ 641 (700-1⅞)	1140-2	641 (700-2)
CIRCLING	1140-1	632 (700-1)	1140-1⅞ 632 (700-1⅞)	1140-2	1240-2½ 732 (800-2½)