

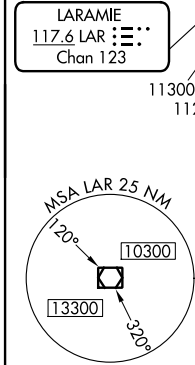
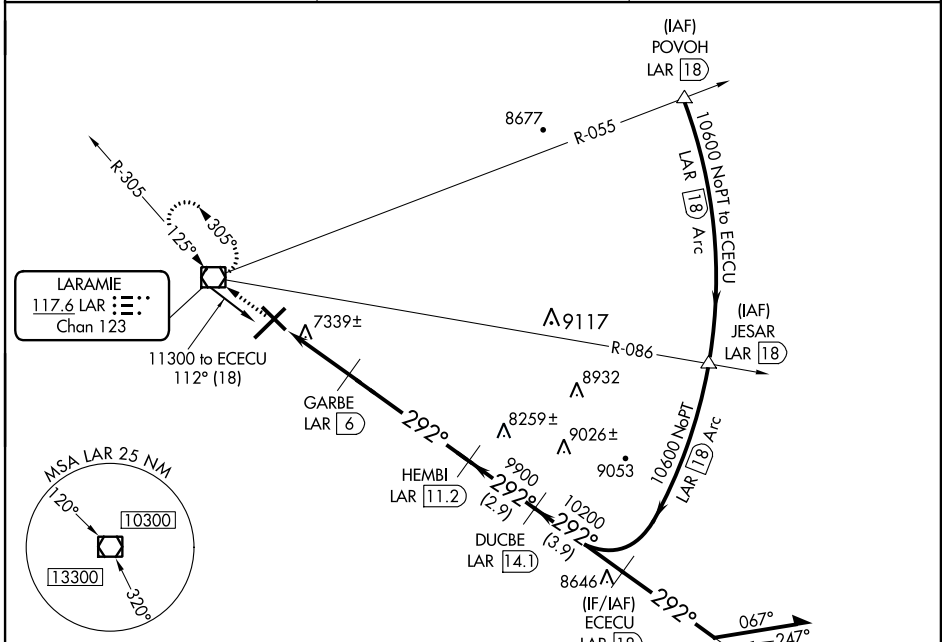
VOR/DME LAR 117.6 Chan 123	APP CRS 292°	Rwy Idg TDZE Apt Elev 6300 7278 7284
---	------------------------	--

VOR/DME RWY 30

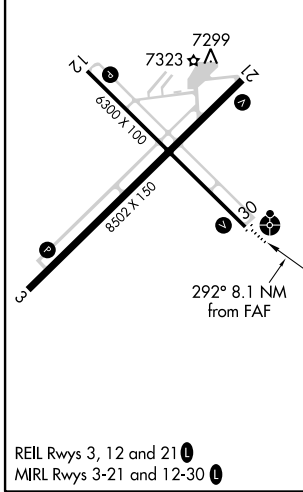
LARAMIE RGNL (L.A.R.)

	ODALS	MISSED APPROACH: Climb to 9600 direct LAR VOR/DME and hold, continue climb-in-hold to 9600.

ASOS 135.475	DENVER CENTER 125.9 284.7	UNICOM 123.05 (CTAF)
------------------------	-------------------------------------	--------------------------------



ELEV 7284	D	TDZE 7278
-----------	----------	-----------



9600	LAR	ECECU LAR 18	Remain within 10 NM
0.9	2 NM	5.2 NM	2.9 NM 3.9 NM
CATEGORY	A	B	C D
S-30	7600- $\frac{3}{4}$	322 (400- $\frac{3}{4}$)	7600-1 322 (400-1)
CIRCLING	7660-1 376 (400-1)	7740-1 456 (500-1)	7740-1½ 456 (500-1½) 7840-2 556 (600-2)

NW-1, 07 FEB 2013 to 07 MAR 2013

NW-1, 07 FEB 2013 to 07 MAR 2013