

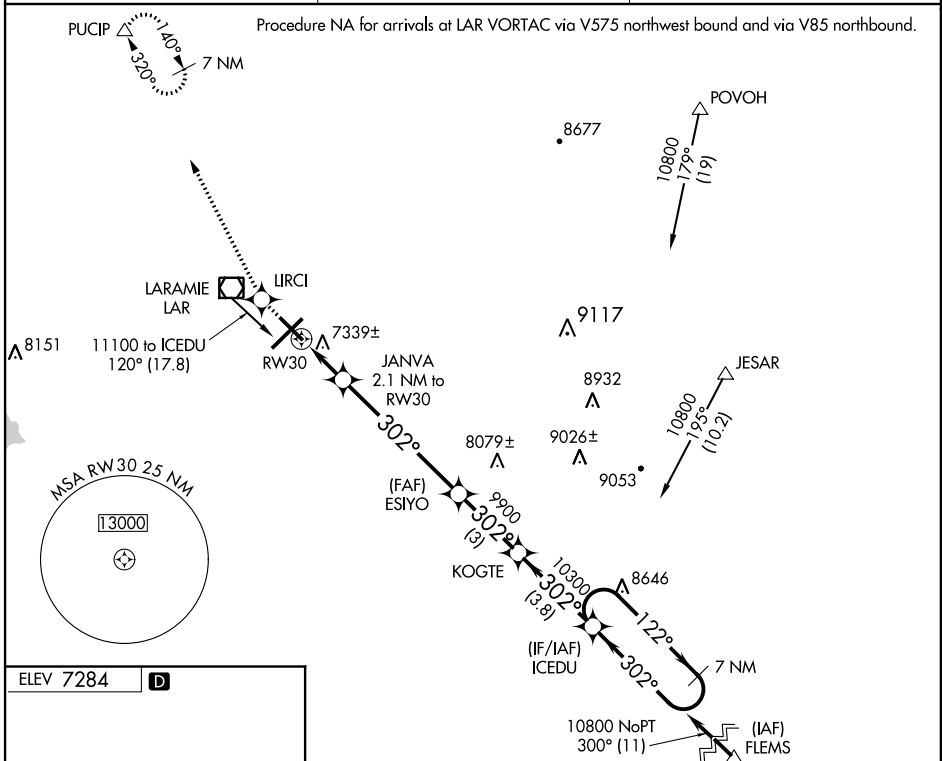
# RNAV (GPS) RWY 30

LARAMIE RGNL (L.A.R.)

WAAS CH <b>53600</b> W30A	APP CRS <b>302°</b>	Rwy Idg TDZE Apt Elev	<b>6300</b> <b>7278</b> <b>7284</b>
---------------------------------	------------------------	-----------------------------	---

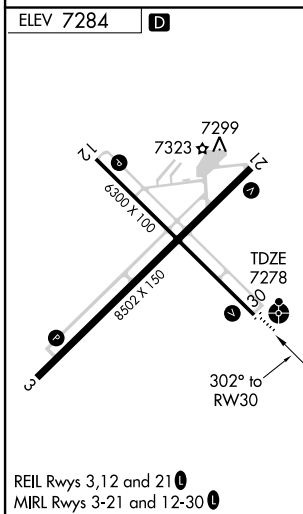
<p><b>▼</b> Inoperative table does not apply. DME/DME RNP-0.3 NA. For uncompensated Baro-VNAV systems, LNAV/VNAV NA below -29°C (-20°F) or above 35°C (95°F).</p>	<p>ODALS</p>	<p>MISSED APPROACH: Climb to 9400 direct LIRCI and via 320° track to PUCIP and hold.</p>
---	--------------	--

ASOS <b>135.475</b>	DENVER CENTER <b>125.9 284.7</b>	UNICOM <b>123.05</b> (CTAF) <b>0</b>
------------------------	-------------------------------------	---



NW-1, 07 FEB 2013 to 07 MAR 2013

NW-1, 07 FEB 2013 to 07 MAR 2013



9400	LIRCI	tr 320°	PUCIP	ICEDU	7 NM Holding Pattern
*LNAV only	JANVA 2.1 NM to RW30	ESIYO	KOGTE	ICEDU	7 NM
	*0.9 NM to RW30				
	RW30	7980	9900	10300	10800
		0.9	1.2	5.8	3
					3.8
CATEGORY	A	B	C	D	
LPV DA	7528-1 250 (300-1)				
LNAV/VNAV DA	7629-1½ 351 (400-1½)				
LNAV MDA	7600-1 322 (400-1)				
CIRCLING	7660-1½ 376 (400-1½)	7740-1½ 456 (500-1½)	7740-1½ 456 (500-1½)	7840-2 556 (600-2)	