

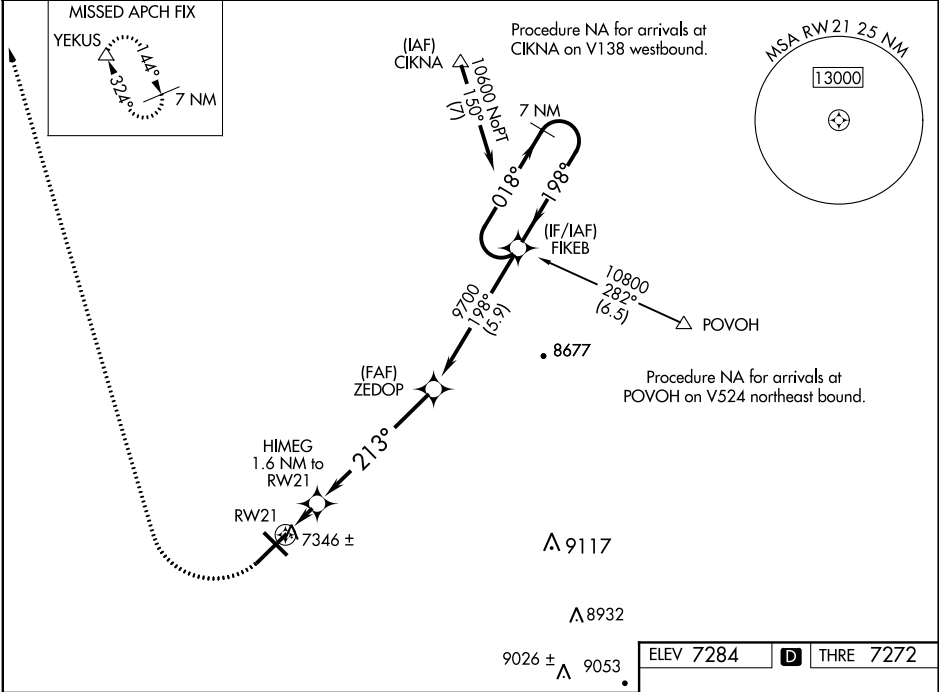
RNAV (GPS) RWY 21

LARAMIE RGNL (L.A.R.)

WAAS CH 72825 W21A	APP CRS 213°	Rwy Idg THRE Apt Elev 8502 7272 7284
--	------------------------	--

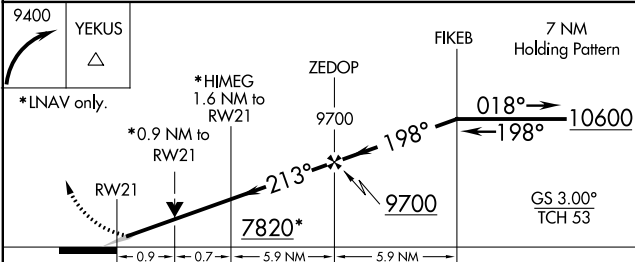
<p>▼ Circling to Rwy 30 NA at night. Baro-VNAV NA. ▲ DME/DME RNP-0.3 NA.</p>	<p>MISSED APPROACH: Climbing right turn to 9400 direct YEKUS and hold.</p>
--	--

<p>ASOS 135.475</p>	<p>DENVER CENTER 125.9 284.7</p>	<p>UNICOM 123.05 (CTAF) 📻</p>
--------------------------------	---	---

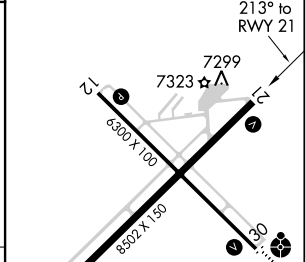


NW-1, 07 FEB 2013 to 07 MAR 2013

NW-1, 07 FEB 2013 to 07 MAR 2013



ELEV 7284	D	THRE 7272
-----------	----------	-----------



CATEGORY	A	B	C	D
LPV DA		7522- ³ / ₄	250 (300- ³ / ₄)	
LNAV/VNAV DA		7522- ³ / ₄	250 (300- ³ / ₄)	
LNAV MDA		7600-1	328 (400-1)	
CIRCLING	7660-1 376 (400-1)	7740-1 456 (500-1)	7740-1½ 456 (500-1½)	7840-2 556 (500-2)

REIL Rwy 3, 12 and 21 **📻**
MIRL Rwy 3-21 and 12-30 **📻**