

LARAMIE, WYOMING

AL-225 (FAA)

# RNAV (GPS) RWY 12

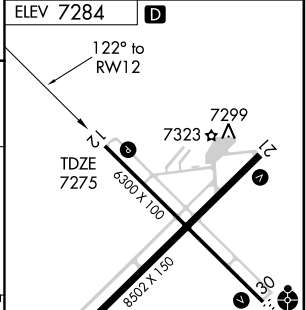
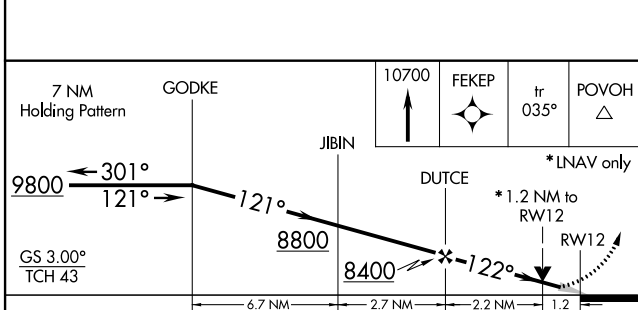
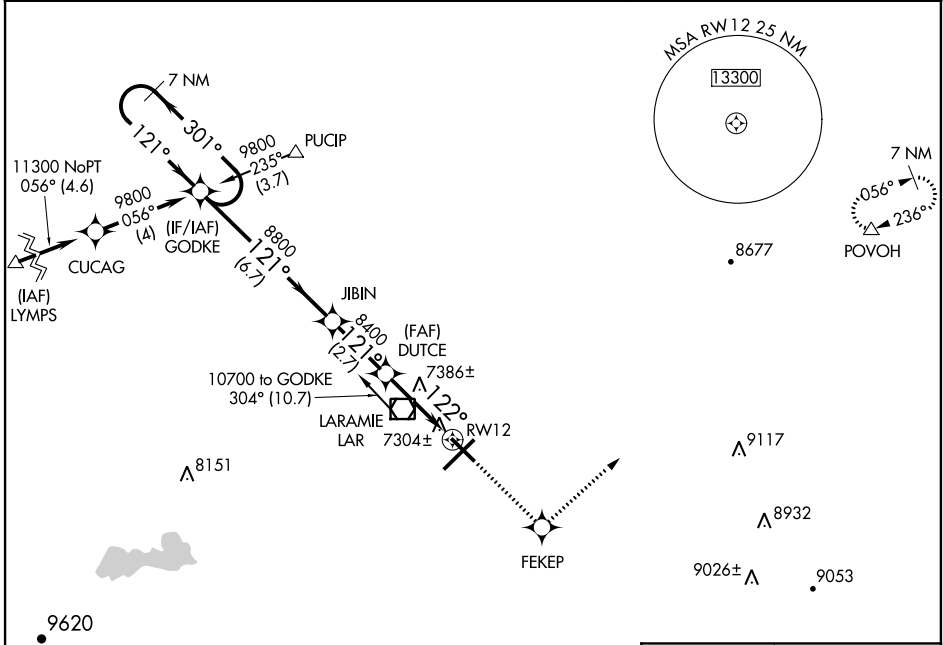
LARAMIE RGNL (L.A.R.)

WAAS CH <b>70600</b> <b>W12A</b>	APP CRS <b>122°</b>	Rwy Idg TDZE Apt Elev	<b>6300</b> <b>7275</b> <b>7284</b>
--	------------------------	-----------------------------	---

**▽** DME/DME RNP-0.3 NA.  
For uncompensated Baro-VNAV systems, LNAV/VNAV  
NA below -29°C (-20°F) or above 34°C (93°F).

**MISSED APPROACH:** Climb to 10700 direct FEKEP  
and via 035° track to POVOH and hold.

ASOS <b>135.475</b>	DENVER CENTER <b>125.9 284.7</b>	UNICOM <b>123.05</b> (CTAF) <b>①</b>
------------------------	-------------------------------------	---



CATEGORY	A	B	C	D
LPV DA	7525-1		250 (300-1)	
LNAV/VNAV DA	7622-1¼		347 (400-1¼)	
LNAV MDA	7700-1		7700-1¼ 425 (500-1¼)	
CIRCLING	7700-1¼ 416 (500-1¼)	7740-1¼ 456 (500-1¼)	7740-1½ 456 (500-1½)	7840-2 556 (600-2)

REIL Rwy 3, 12 and 21 **①**  
MIRL Rwy 3-21 and 12-30 **①**

NW-1, 07 FEB 2013 to 07 MAR 2013

NW-1, 07 FEB 2013 to 07 MAR 2013

LARAMIE, WYOMING  
Orig 11013

41°19'N - 105°41'W

# LARAMIE RGNL (L.A.R.) RNAV (GPS) RWY 12