

LANSING, MICHIGAN

AL-224 (FAA)

WAAS CH <b>50413</b> <b>W24A</b>	APP CRS <b>238°</b>	Rwy Idg TDZE Apt Elev	<b>5002</b> <b>857</b> <b>861</b>
--	------------------------	-----------------------------	---

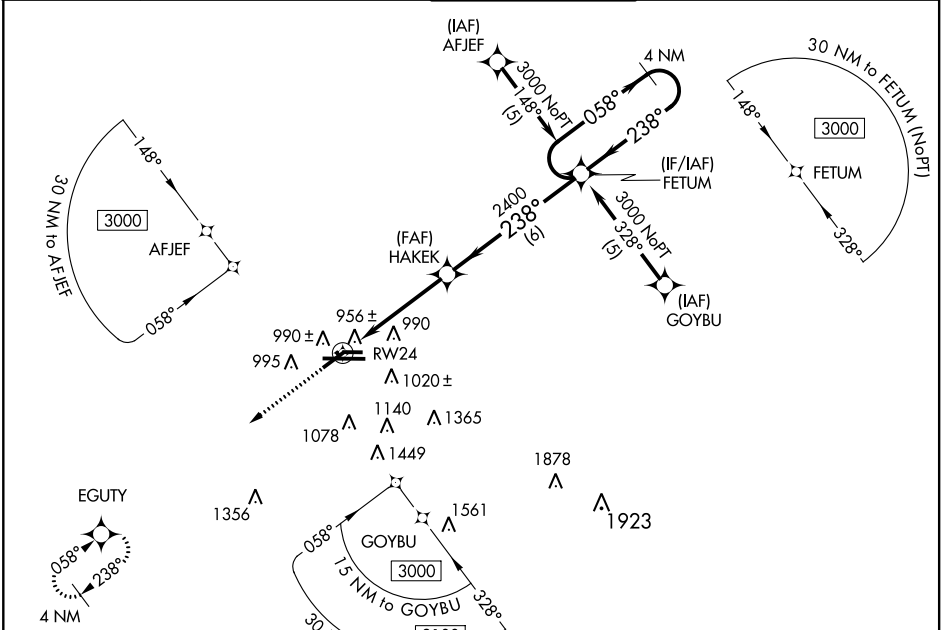
# RNAV (GPS) RWY 24

LANSING/CAPITAL REGION INTL (L.AN)

**ASR** For uncompensated Baro-VNAV systems, LNAV/VNAV NA below -16°C (4°F) or above 47°C (116°F). DME/DME RNP-0.3 NA. Visibility reduction by helicopters NA.

MISSED APPROACH: Climb to 3000 direct EGUTY and hold.

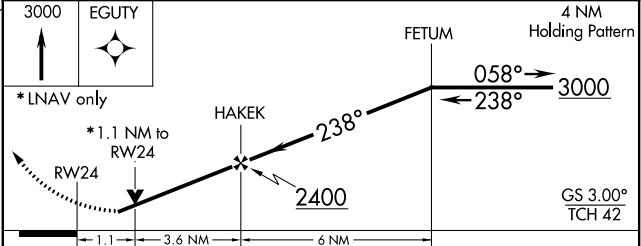
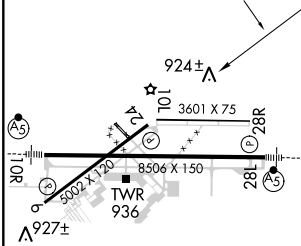
ATIS <b>119.75</b>	LANSING APP CON <b>133.475 226.4 (NORTH)</b> <b>118.65 226.4 (SOUTH)</b>	LANSING TOWER <b>119.9 240.9</b>	GND CON <b>121.9</b>	CLNC DEL <b>123.675</b>
-----------------------	--	-------------------------------------	-------------------------	----------------------------



EC-1, 07 FEB 2013 to 07 MAR 2013

EC-1, 07 FEB 2013 to 07 MAR 2013

ELEV 861	TDZE 857
----------	----------



CATEGORY	A	B	C	D
LPV DA		1215-1¼	358 (400-1¼)	
LNAV/VNAV DA		1254-1½	397 (400-1½)	
LNAV MDA	1240-1	383 (400-1)		1240-1¼ 383 (400-1¼)
CIRCLING	1380-1	519 (600-1)	1380-1½ 519 (600-1½)	1440-2 579 (600-2)

REIL Rwy 6 and 24  
HIRL Rwy 10R-28L  
MIRL Rwy 6-24 and 10L-28R

LANSING, MICHIGAN  
Orig 12264

42°47'N - 84°35'W

# RNAV (GPS) RWY 24