

LAKEHURST, NEW JERSEY

# VOR RWY 24

VOR/DME COL	APCH CRS	Rwy Idg TDZE	5002
115.4	218°	101	
Chan 101		Arprt Elev	101

AL-223 [USN]

LAKEHURST MAXFIELD FLD, (JOINT BASE MC GUIRE DIX LAKEHURST) (KNEL)

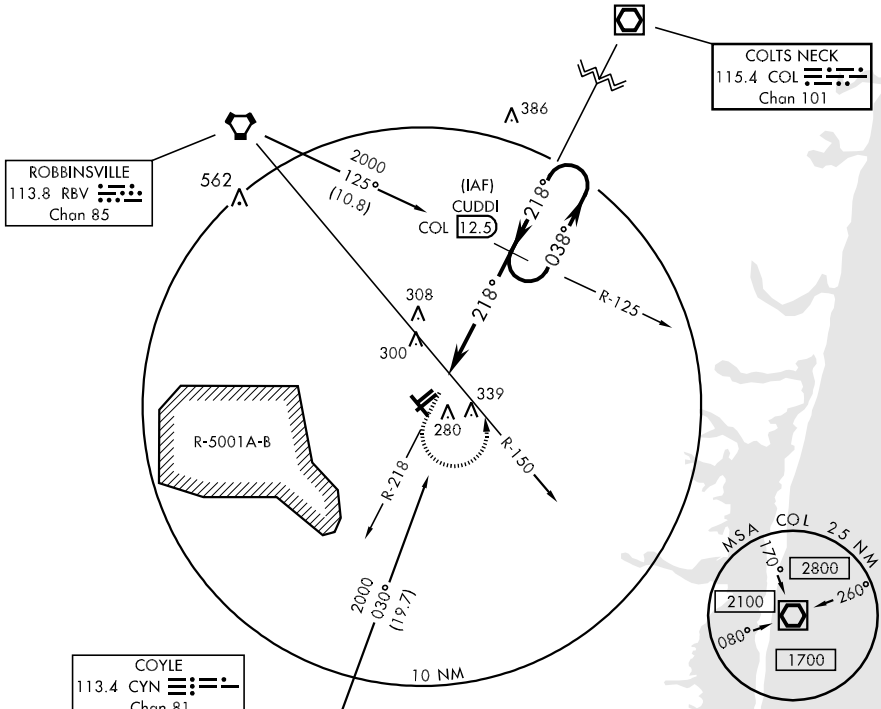


MISSED APPROACH: Climb to 1000 via COL VOR/DME R-218, then climbing left turn to 2000, intercept COL R-218 to CUDDI and hold.

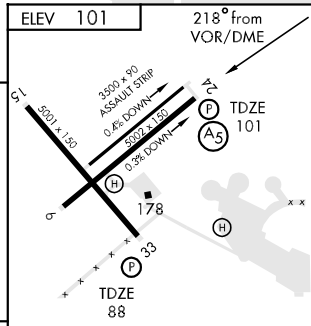
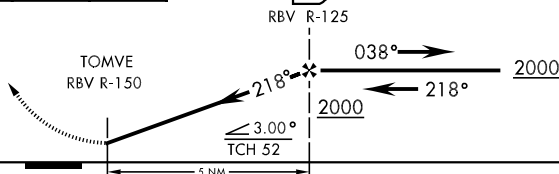
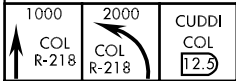
MC GUIRE APP CON  
124.15 363.8

LAKEHURST TOWER ★  
127.775 360.2

GND CON  
118.375 307.05



EMERG SAFE ALT 100 NM 5000



CATEGORY	A	B	C	D
S-24	560-1 459 (500-1)	560-1 459 (500-1)	560-1 1/4 459 (500-1 1/4)	560-1 1/2 459 (500-1 1/2)
CIRCLING	600-1 499 (500-1)	640-1 539 (600-1)	640-1 1/2 539 (600-1 1/2)	660-2 559 (600-2)

HIRL Rwy 6-24, 15-33

FAF to MAP 5 NM

Knots	60	90	120	150	180
Min:Sec	5:00	3:20	2:30	2:00	1:40

LAKEHURST, NEW JERSEY  
Amdt 1 11181

40°02'N-74°21'W

LAKEHURST MAXFIELD FLD, (JOINT BASE MC GUIRE DIX LAKEHURST) (KNEL)

# VOR RWY 24

NE-2, 07 FEB 2013 to 07 MAR 2013

NE-2, 07 FEB 2013 to 07 MAR 2013