

LAKEHURST, NEW JERSEY

RNAV (GPS) RWY 24

LAKEHURST MAXFIELD FLD,
(JOINT BASE MC GUIRE DIX LAKEHURST) (KNEL)

| | | |
|----------|-----------|------|
| APCH CRS | Rwy ldg | 5002 |
| 242° | TDZE | 101 |
| | Arpt Elev | 101 |

AL-223 [USN]

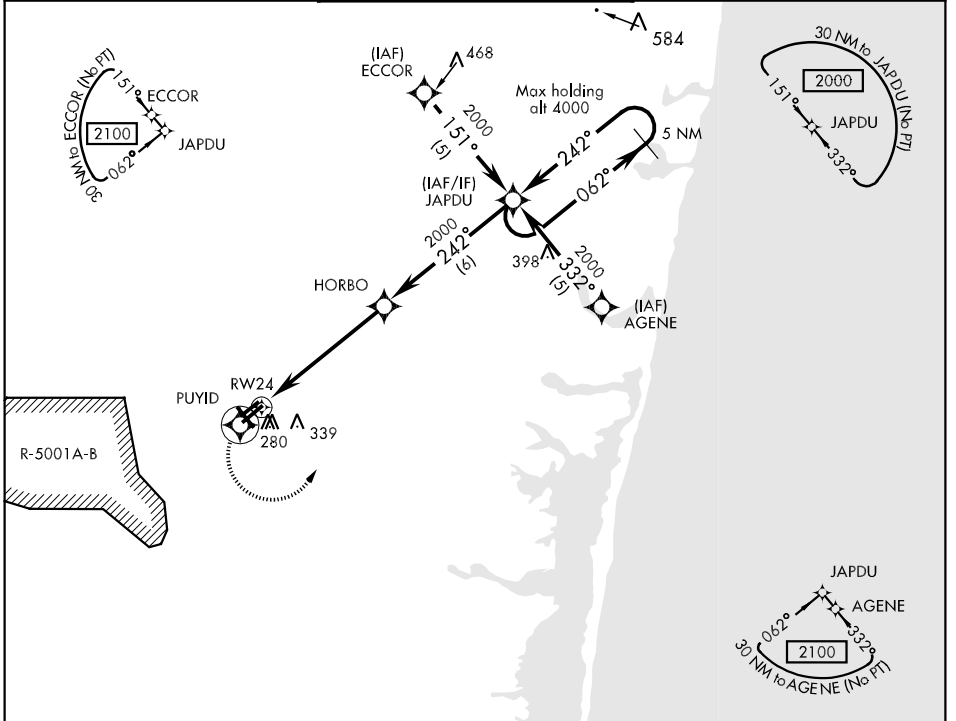
(JOINT BASE MC GUIRE DIX LAKEHURST) (KNEL)

* When ALS inop, increase CAT ABC vis to 1 mile, CAT D vis to 1½ miles. DME/DME RNP-0.3 NA.



MISSED APPROACH: Climb to 2000 direct PUYID, then turn left direct JAPDU and hold.

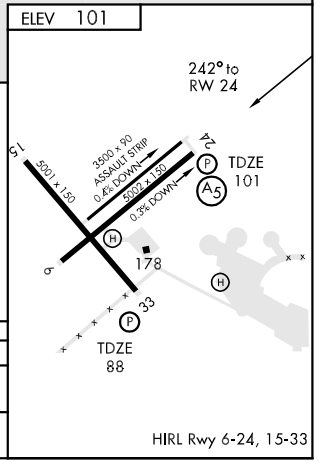
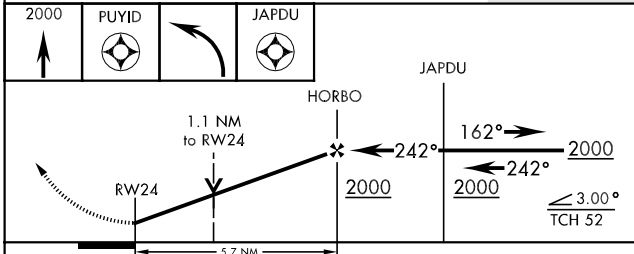
| | | |
|---|---|----------------------------------|
| MC GUIRE APP CON 124.15 363.8 | LAKEHURST TOWER ★ 127.775 360.2 | GND CON 118.375 307.05 |
|---|---|----------------------------------|



NE-2, 07 FEB 2013 to 07 MAR 2013

NE-2, 07 FEB 2013 to 07 MAR 2013

EMERG SAFE ALT 100 NM 5000



| CATEGORY | A | B | C | D |
|-----------|-------------------|-------------------|---------------------|-------------------|
| RNAV MDA* | 500-½ 399 (400-½) | 500-¾ 399 (400-¾) | 500-¾ 399 (400-¾) | 500-¾ 399 (400-¾) |
| CIRCLING | 600-1 499 (500-1) | 640-1 539 (600-1) | 640-1½ 539 (600-1½) | 660-2 559 (600-2) |

HIRL Rwy 6-24, 15-33

LAKEHURST, NEW JERSEY
11181

40°02'N-74°21'W

LAKEHURST MAXFIELD FLD,
(JOINT BASE MC GUIRE DIX LAKEHURST) (KNEL)

RNAV (GPS) RWY 24