

LAFAYETTE, INDIANA

AL-220 (FAA)

WAAS CH 82103 W28A	APP CRS 280°	Rwy Idg TDZE Apt Elev	6600 598 606
--	------------------------	-----------------------------	---

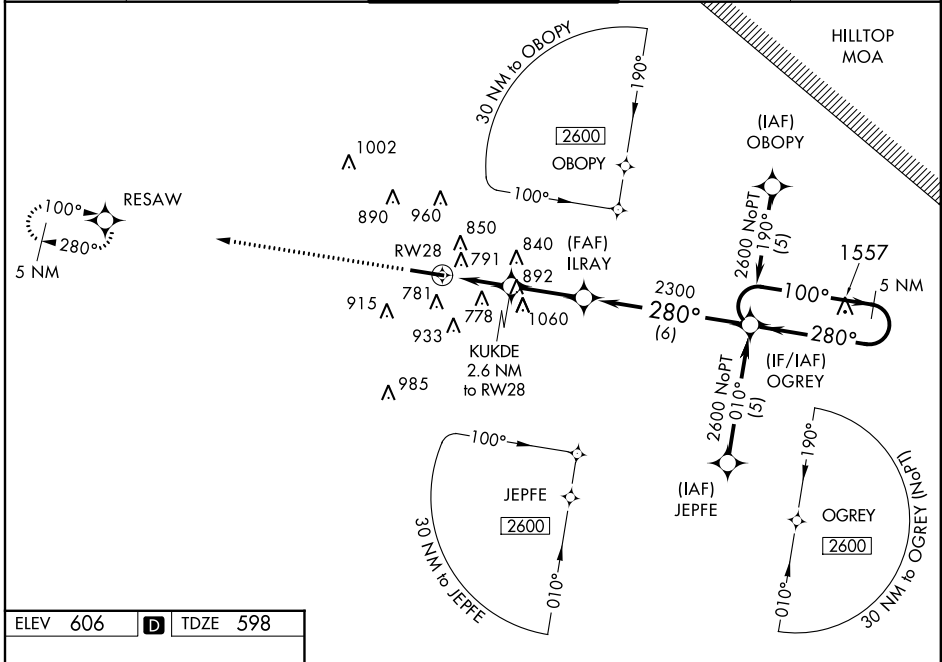
RNAV (GPS) RWY 28

LAFAYETTE / PURDUE UNIVERSITY (LAF)

▼ If local altimeter setting not received, use Vermilion Rgnl altimeter setting and increase all DAs 89 feet, all MDAs 100 feet. Baro-VNAV NA when using Vermilion Rgnl altimeter setting. For uncompensated Baro-VNAV systems, LNAV/VNAV NA below -16°C (4°F) or above 47°C (116°F).
 ▲ DME/DME RNP-0.3 NA. Visibility reduction by helicopters NA.

MISSED APPROACH: Climb to 2600 direct RESAW and hold.

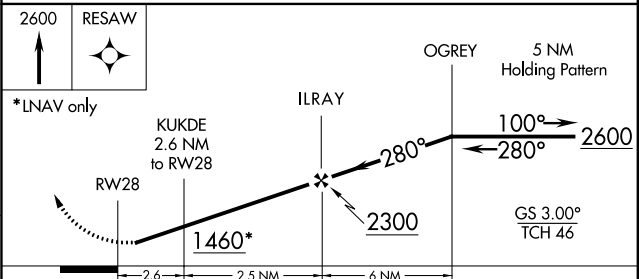
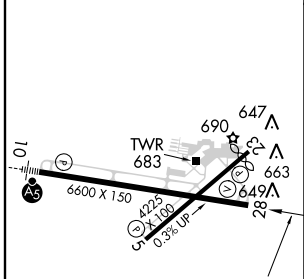
ATIS 127.75	GRISSOM APP CON 123.85	LAFAYETTE TOWER ★ 119.6 (CTAF) 0 393.0	GND CON 121.9 393.0	UNICOM 122.95
-----------------------	----------------------------------	---	-------------------------------	-------------------------



EC-2, 07 FEB 2013 to 07 MAR 2013

EC-2, 07 FEB 2013 to 07 MAR 2013

ELEV 606	D	TDZE 598
----------	----------	----------



CATEGORY	A	B	C	D
LPV DA		856-1	258 (300-1)	
LNAV/VNAV DA		1125-1¾	527 (600-1¾)	
LNAV MDA	1060-1	462 (500-1)	1060-1¼ 462 (500-1¼)	1060-1½ 462 (500-1½)
CIRCLING	1160-1	554 (600-1)	1160-1½ 554 (600-1½)	1320-2¼ 714 (800-2¼)

HIRL Rwy 10-28
 REIL Rws 5, 23 and 28
 MIRL Rwy 5-23

LAFAYETTE, INDIANA
 Amdt 1 12096

40°25'N-86°56'W

LAFAYETTE / PURDUE UNIVERSITY (LAF)
RNAV (GPS) RWY 28