

WAAS Ch 45902 W10A	APP CRS 100°	Rwy Idg TDZE 601 Apt Elev 606
--	------------------------	---

RNAV (GPS) RWY 10

LAFAYETTE / PURDUE UNIVERSITY (LAF)

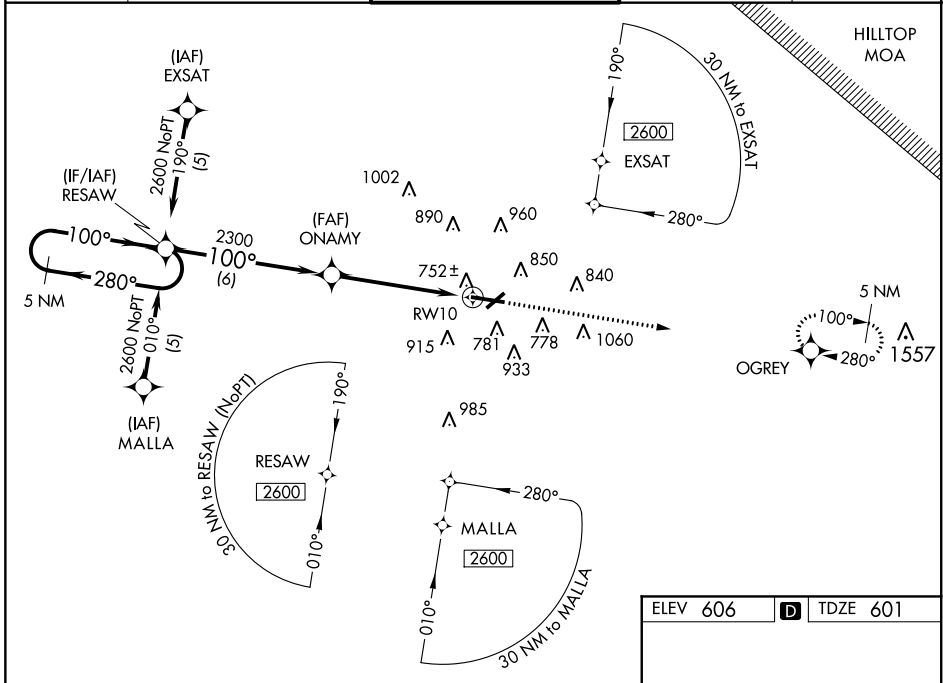
▼ If local altimeter setting not received, use Vermilion Rgnl altimeter setting and increase all DAs 89 feet, all MDAs 100 feet. Baro-VNAV NA when using Vermilion Rgnl altimeter setting. VDP NA when using Vermilion Rgnl altimeter setting. For uncompensated Baro-VNAV systems, LNAV/VNAV NA below -16°C (4°F) or above 47°C (116°F). For inoperative MALSR, increase LPV all Cats visibility to 1 mile. DME/DME RNP-0.3 NA.

MALSR



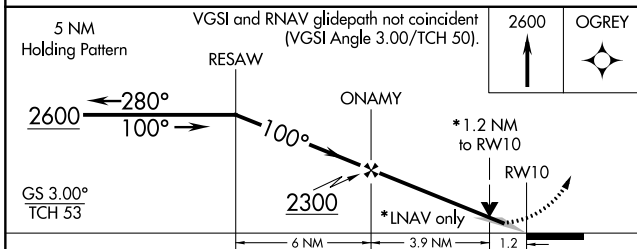
MISSED APPROACH: Climb to 2600 direct OGREY and hold.

ATIS 127.75	GRISSOM APP CON 123.85	LAFAYETTE TOWER ★ 119.6 (CTAF) 0 393.0	GND CON 121.9 393.0	UNICOM 122.95
-----------------------	----------------------------------	--	-------------------------------	-------------------------



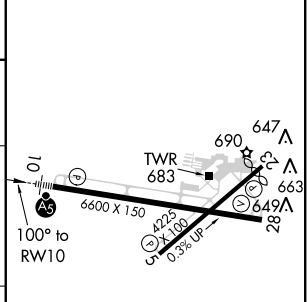
EC-2, 07 FEB 2013 to 07 MAR 2013

EC-2, 07 FEB 2013 to 07 MAR 2013



ELEV 606	D TDZE 601
----------	-------------------

CATEGORY	A	B	C	D
LPV DA	877-½ 276 (300-½)			
LNAV/VNAV DA	1083-1¼ 482 (500-1¼)			
LNAV MDA	1040-½ 439 (500-½)	1040-¾ 439 (500-¾)		1040-1 439 (500-1)
CIRCLING	1160-1 554 (600-1)	1160-1½ 554 (600-1½)	1320-2¼ 714 (800-2¼)	



HIRL Rwy 10-28
 REIL Rwy 5, 23 and 28
 MIRL Rwy 5-23