

LAFAYETTE, INDIANA

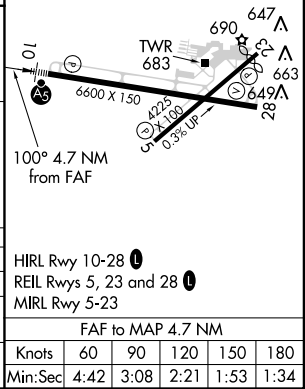
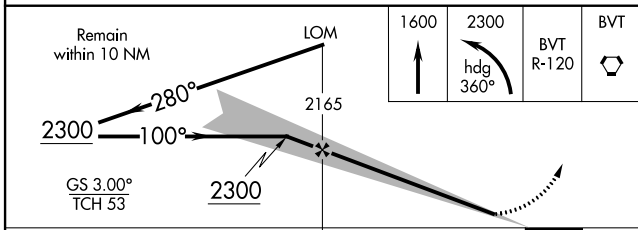
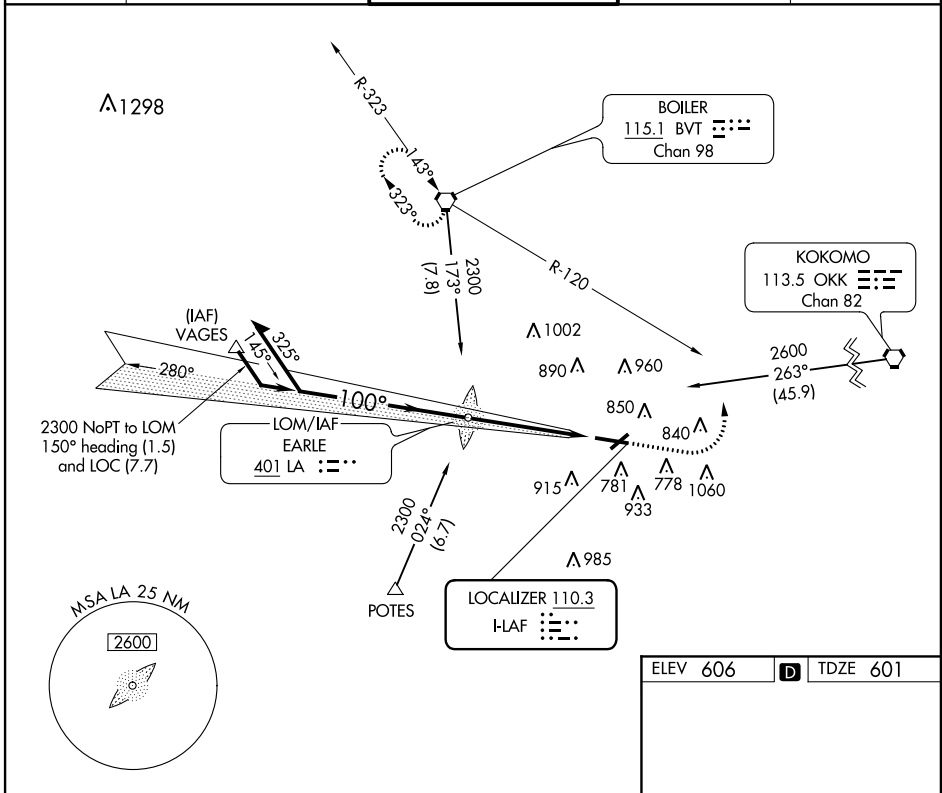
AL-220 (FAA)

ILS RWY 10

LAFAYETTE / PURDUE UNIVERSITY (LAF)

LOC I-LAF 110.3	APP CRS 100°	Rwy Idg TDZE Apt Elev	6600 601 606
---------------------------	------------------------	-----------------------------	---

▽ ▲	MALSR 	MISSED APPROACH: Climb to 1600, then climbing left turn to 2300 via heading 360° and BVT R-120 to BVT VORTAC and hold.		
ATIS 127.75	GRISSOM APP CON 123.85	LAFAYETTE TOWER ★ 119.6 (CTAF) 0 393.0	GND CON 121.9 393.0	UNICOM 122.95



ELEV 606		D TDZE 601			
CATEGORY	A	B	C	D	
S-ILS 10	801-½ 200 (200-½)				
S-LOC 10	1060-½	459 (500-½)	1060-¾ 459 (500-¾)	1060-1 459 (500-1)	
CIRCLING	1160-1	554 (600-1)	1160-1½ 554 (600-1½)	1320-2¼ 714 (800-2¼)	
FAF to MAP 4.7 NM					
Knots	60	90	120	150	180
Min:Sec	4:42	3:08	2:21	1:53	1:34

LAFAYETTE, INDIANA
Amdt 11 12320

40°25'N-86°56'W

LAFAYETTE / PURDUE UNIVERSITY (LAF)
ILS RWY 10

EC-2, 07 FEB 2013 to 07 MAR 2013

EC-2, 07 FEB 2013 to 07 MAR 2013