

# VOR RWY 36

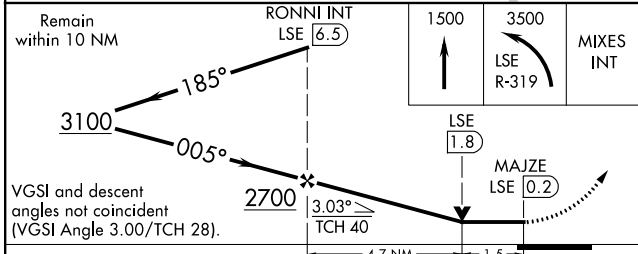
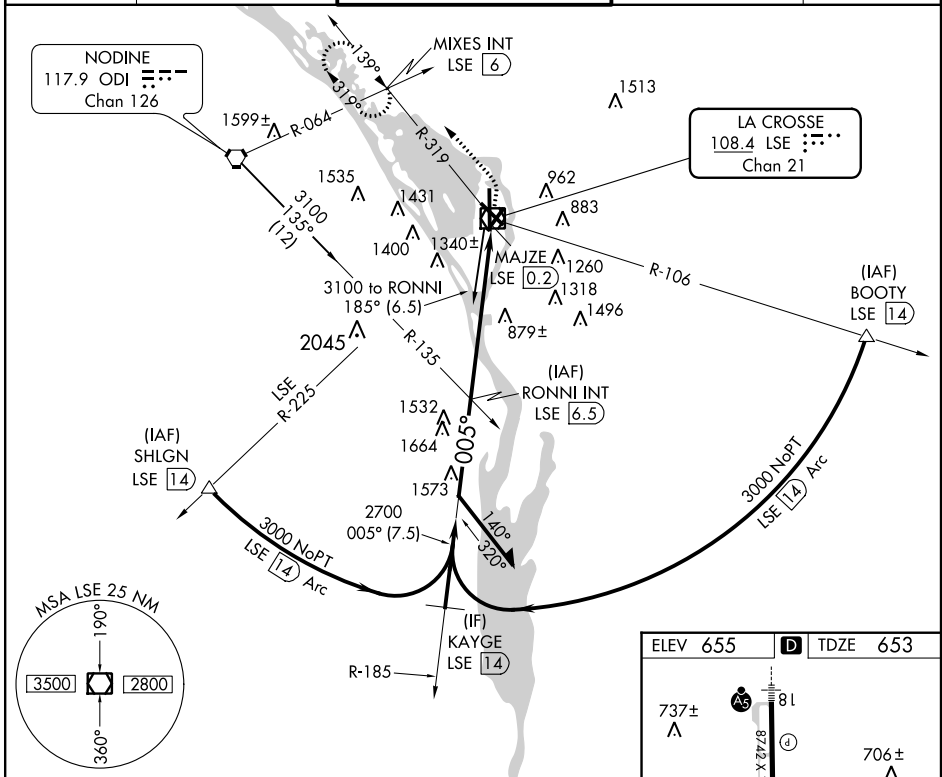
LA CROSSE MUNI (LSE)

VOR/DME LSE <b>108.4</b> Chan <b>21</b>	APP CRS <b>005°</b>	Rwy Idg <b>7426</b> TDZE <b>653</b> Apt Elev <b>655</b>
---	------------------------	---

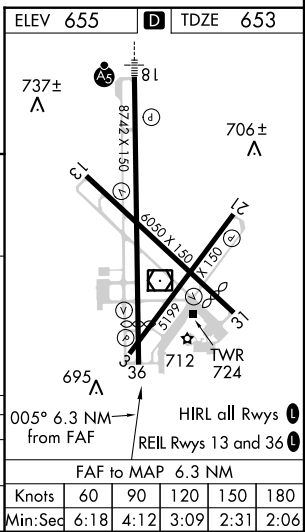
**▼** Visibility reduction by helicopters NA. When local altimeter setting not received, use Winona altimeter setting and increase all MDA 60 feet. Increase S-36 Cat D and Circling Cat C visibility 1/4 mile.

**▲** MISSED APPROACH: Climb to 1500 then climbing left turn to 3500 via LSE R-319 to MIXES Int/LSE 6 DME and hold, continue climb-in-hold to 3500.

ATIS <b>124.95</b>	MINNEAPOLIS CENTER <b>128.6 363.0</b>	LA CROSSE TOWER ★ <b>118.45</b> (CTAF) <b>251.075</b>	GND CON <b>121.8</b>	UNICOM <b>122.95</b>
-----------------------	--	--	-------------------------	-------------------------



CATEGORY	A	B	C	D
S-36	1160-1	507 (600-1)	1160-1½	507 (600-1½)
CIRCLING	1160-1	505 (600-1)	1440-2¼ 785 (800-2¼)	1780-3 1125 (1200-3)



EC-3, 07 FEB 2013 to 07 MAR 2013

EC-3, 07 FEB 2013 to 07 MAR 2013