

RNAV (GPS) RWY 18

LA CROSSE MUNI (LSE)

WAAS CH 72809 W18A	APP CRS 177°	Rwy Idg TDZE Apt Elev	8536 653 655
--	------------------------	-----------------------------	---

MALSRL

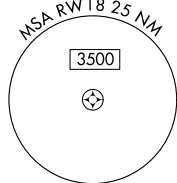
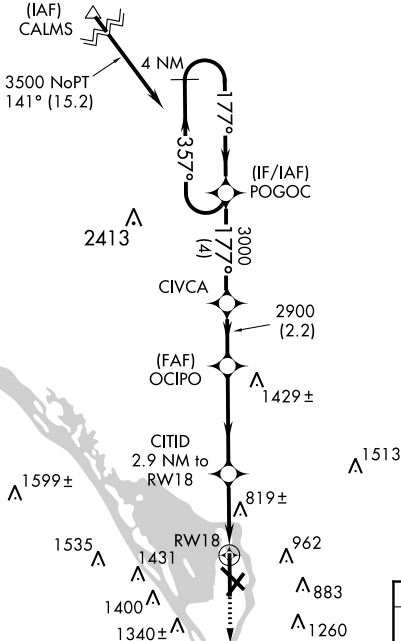


MISSED APPROACH:
Climb to 3000 direct
JOMLO and hold.

Baro-VNAV NA when using Winona altimeter setting. For uncompensated Baro-VNAV systems, LNAV/VNAV NA below -16° C (4° F) or above 48° C (118° F). DME/DME RNP-0.3 NA. When local altimeter setting not received, use Winona altimeter setting and increase all DA 53 feet, increase LNAV/VNAV all Cats visibility ¼ mile, increase all MDA 60 feet and Circling Cat C visibility ¼ mile. For inoperative MALSRL, increase LPV all Cats visibility ½ mile. LNAV minimums NA with Winona altimeter setting.

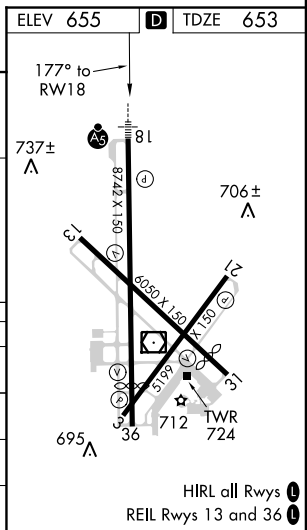
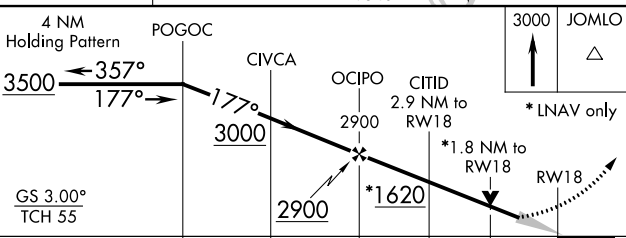
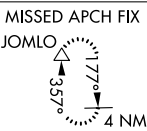
ATIS 124.95	MINNEAPOLIS CENTER 128.6 363.0	LA CROSSE TOWER * 118.45 (CTAF) 251.075	GND CON 121.8	UNICOM 122.95
-----------------------	--	---	-------------------------	-------------------------

Procedure NA for arrivals
at CALMS
via V129 Northbound.



EC-3, 07 FEB 2013 to 07 MAR 2013

EC-3, 07 FEB 2013 to 07 MAR 2013



CATEGORY	A	B	C	D
LPV DA	925-½ 272 (300-½)			
LNAV/VNAV DA	1204-1½ 551 (600-1½)			
LNAV MDA	1360-½ 707 (800-½)	1360-1½ 707 (800-1½)	1360-1¾ 707 (800-1¾)	1360-1¾ 707 (800-1¾)
CIRCLING	1360-1 705 (800-1)	1440-2¼ 785 (800-2¼)	1780-3 1125 (1200-3)	