

RNAV (GPS) RWY 13

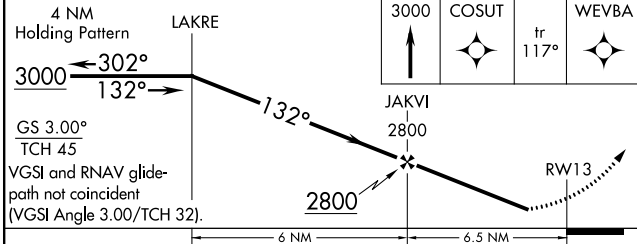
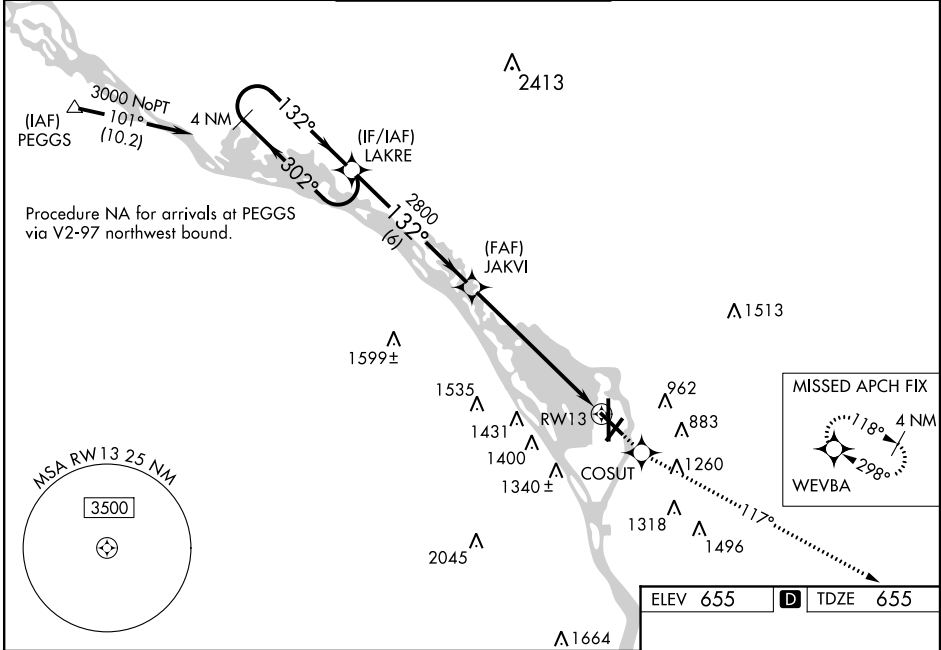
LA CROSSE MUNI (LSE)

WAAS CH 56509 W13A	APP CRS 132°	Rwy Idg TDZE Apt Elev	5310 655 655
--	------------------------	-----------------------------	---

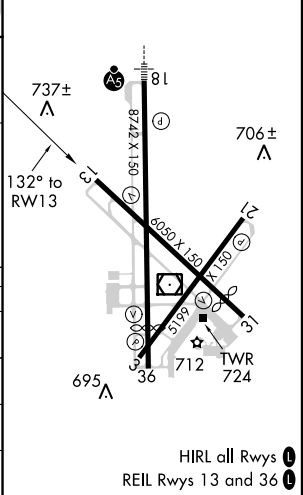
⚠ Baro-VNAV NA when using Winona altimeter setting. For uncompensated Baro-VNAV systems, LNAV/VNAV NA below -16° C (4° F) or above 48° C (118° F).
⚠ DME/DME RNP-0.3 NA. Visibility reduction by helicopters NA. When local altimeter setting not received, use Winona altimeter setting and increase LPV all Cats DA 53 feet, increase LNAV/VNAV all Cats DA 84 feet, increase LPV and LNAV/VNAV visibility ¼ mile all Cats, increase all MDA 60 feet, increase LNAV Cats C/D and Circling Cat C visibility ¼ mile.

MISSED APPROACH:
Climb to 3000 direct COSUT and via 117° track to WEVBA and hold.

ATIS 124.95	MINNEAPOLIS CENTER 128.6 363.0	LA CROSSE TOWER * 118.45 (CTAF) 0 251.075	GND CON 121.8	UNICOM 122.95
-----------------------	--	---	-------------------------	-------------------------



ELEV 655	D TDZE 655
----------	-------------------



CATEGORY	A	B	C	D
LPV DA	957-1 302 (400-1)			
LNAV/VNAV DA	1019-1¼ 364 (400-1¼)			
LNAV MDA	1140-1 485 (500-1)	1140-1¼ 485 (500-1¼)	1140-1½ 485 (500-1½)	
CIRCLING	1140-1 485 (500-1)	1440-2¼ 785 (800-2¼)	1780-3 1125 (1200-3)	

EC-3, 07 FEB 2013 to 07 MAR 2013

EC-3, 07 FEB 2013 to 07 MAR 2013