

# NDB RWY 18

LA CROSSE MUNI (LSE)

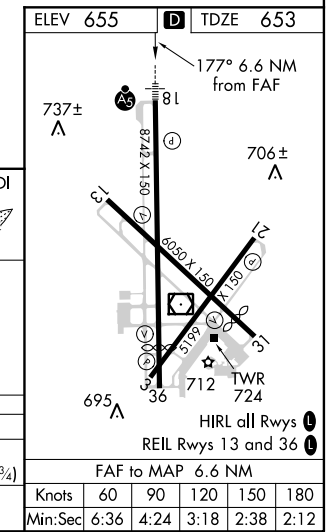
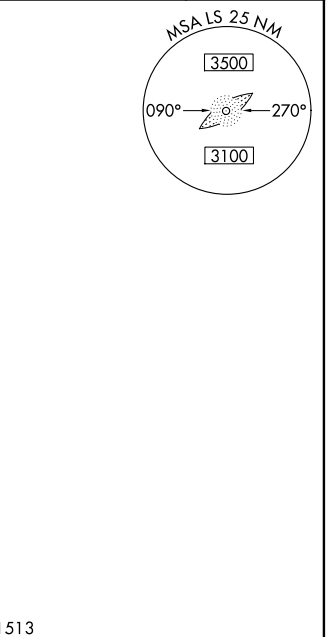
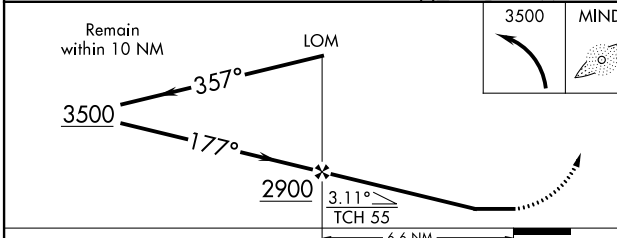
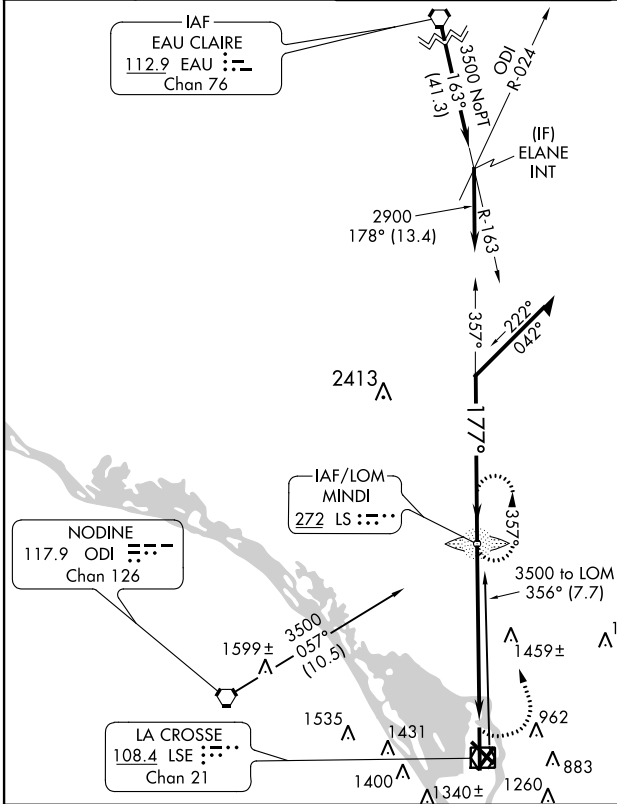
LOM LS <b>272</b>	APP CRS <b>177°</b>	Rwy Idg <b>8536</b>
		TDZE <b>653</b>
		Apt Elev <b>655</b>

**▼** When local altimeter setting not received, use Winona altimeter setting and increase all MDA 60 feet. Inoperative table does not apply to S-18 Cat A.

**▲** MALSR

**MISSED APPROACH:** Climbing left turn to 3500 direct MINDI LOM and hold.

ATIS <b>124.95</b>	MINNEAPOLIS CENTER <b>128.6 363.0</b>	LA CROSSE TOWER ★ <b>118.45 (CTAF) 251.075</b>	GND CON <b>121.8</b>	UNICOM <b>122.95</b>
-----------------------	--	---	-------------------------	-------------------------



CATEGORY	A	B	C	D
S-18	1800-1¼ 1147 (1200-1¼)		1800-2½ 1147 (1200-2½)	1800-2¾ 1147 (1200-2¾)
CIRCLING	1800-1¼ 1145 (1200-1¼)	1800-1½ 1145 (1200-1½)	1800-3 1145 (1200-3)	

EC-3, 07 FEB 2013 to 07 MAR 2013

EC-3, 07 FEB 2013 to 07 MAR 2013