

KNOXVILLE, TENNESSEE

AL-218 (FAA)

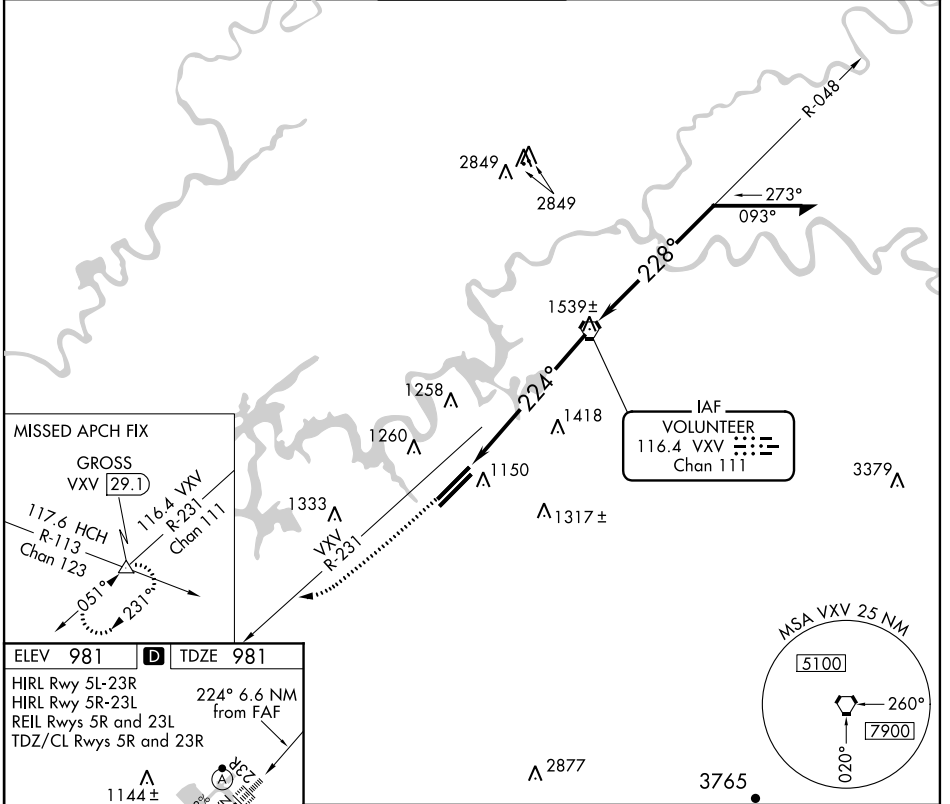
VOR/DME VVX <b>116.4</b> Chan <b>111</b>	APP CRS <b>224°</b>	Rwy Idg TDZE Apt Elev	<b>9005</b> <b>981</b> <b>981</b>
--	------------------------	-----------------------------	---

# VOR RWY 23R

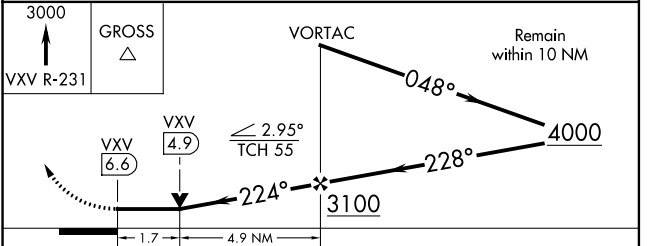
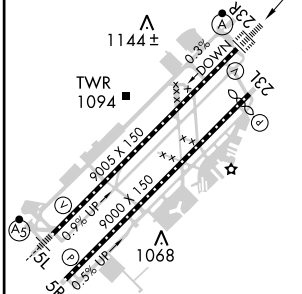
KNOXVILLE/MCGHEE-TYSON (TYS)

ASR	ALSF-2	MISSED APPROACH: Climb to 3000 via VVX R-231 to GROSS Int/29.1 DME and hold.		
-----	--------	--	--	--

ATIS <b>128.35</b>	KNOXVILLE APP CON <b>123.9 360.8</b>	KNOXVILLE TOWER <b>121.2 257.8</b>	GND CON <b>121.9 348.6</b>	CLNC DEL <b>121.65</b>
-----------------------	---	---------------------------------------	-------------------------------	---------------------------



ELEV 981	<b>D</b>	TDZE 981
HIRL Rwy 5L-23R HIRL Rwy 5R-23L REIL Rwys 5R and 23L TDZ/CL Rwys 5R and 23R		
224° 6.6 NM from FAF		



	A		B		C		D	
S-23R	1580/24	599 (600-1/2)	1580/50	599 (600-1)	1580/50	599 (600-1)	1580/60	599 (600-1 1/4)
CIRCLING	1580-1	599 (600-1)	1580-1 1/2	599 (600-1 1/2)	1580-1 1/2	599 (600-1 1/2)	1620-2	639 (700-2)

KNOXVILLE, TENNESSEE  
Amdt 7 12264

35°49'N-84°00'W

# VOR RWY 23R

SE-1, 07 FEB 2013 to 07 MAR 2013

SE-1, 07 FEB 2013 to 07 MAR 2013