

KNOXVILLE, TENNESSEE

AL-218 (FAA)

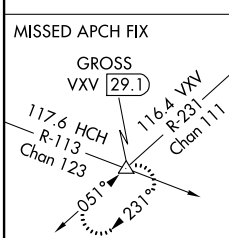
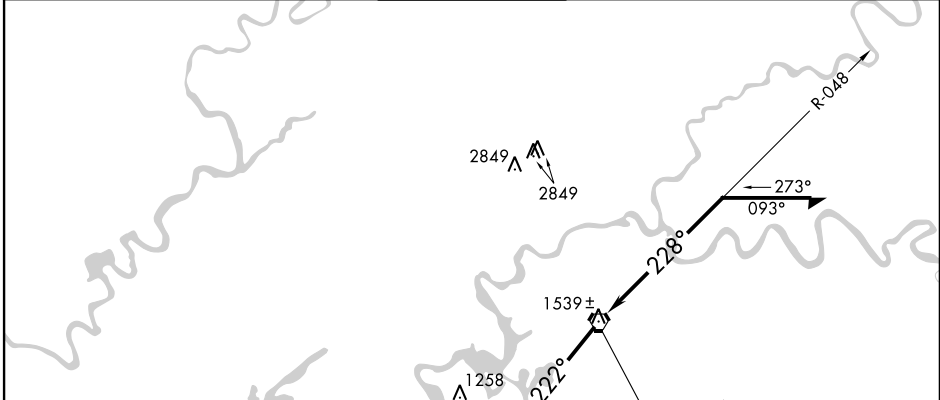
VOR/DME VVX 116.4 Chan 111	APP CRS 222°	Rwy Idg 8600 TDZE 965 Apt Elev 981
--	------------------------	---

VOR RWY 23L

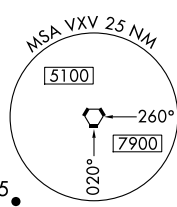
KNOXVILLE/MCGHEE-TYSON (TYS)

ASR	MISSED APPROACH: Climb to 3000 via VVX R-231 to GROSS Int/29.1 DME and hold.			
-----	--	--	--	--

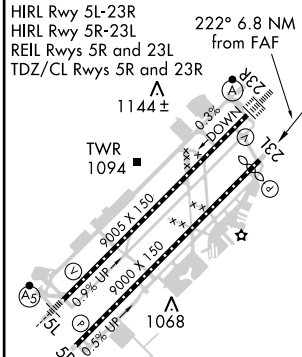
ATIS 128.35	KNOXVILLE APP CON 123.9 360.8	KNOXVILLE TOWER 121.2 257.8	GND CON 121.9 348.6	CLNC DEL 121.65
-----------------------	---	---------------------------------------	-------------------------------	---------------------------



IAF VOLUNTEER
116.4 VVX
Chan 111

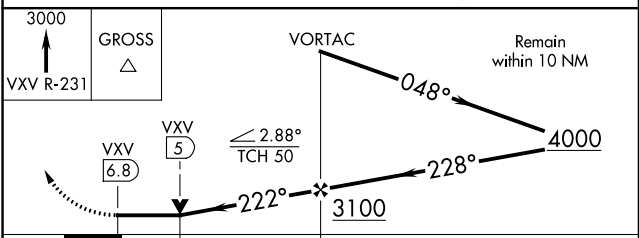


ELEV 981	D	TDZE 981
----------	----------	----------



FAF to MAP 6.8 NM

Knots	60	90	120	150	180
Min:Sec	6:48	4:32	3:24	2:43	2:16



CATEGORY	A	B	C	D
S-23L	1600-1 635 (700-1)		1600-1¾ 635 (700-1¾)	1600-2 635 (700-2)
CIRCLING	1600-1 619 (700-1)		1600-1¾ 619 (700-1¾)	1620-2 639 (700-2)

KNOXVILLE, TENNESSEE
Amdt 5 12264

35°49'N-84°00'W

VOR RWY 23L

SE-1, 07 FEB 2013 to 07 MAR 2013

SE-1, 07 FEB 2013 to 07 MAR 2013