

WAAS CH 48802 W05A	APP CRS 048°	Rwy ldg 9005 TDZE 953 Apt Elev 981
--	------------------------	---

RNAV (GPS) RWY 5L

KNOXVILLE/MCGHEE-TYSON (TYS)

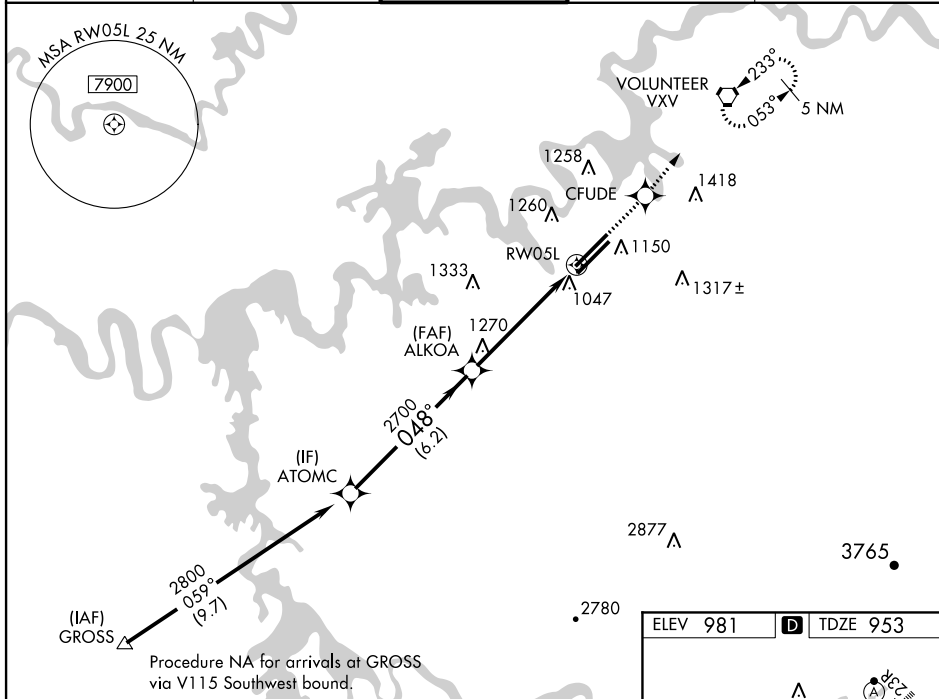
ASR For inoperative MALSR, increase LPV all Cats visibility to RVR 5000. For uncompensated Baro-VNAV systems, LNAV/VNAV NA below -16°C (4°F) or above 47°C (116°F). DME/DME RNP-0.3 NA.

MALSR

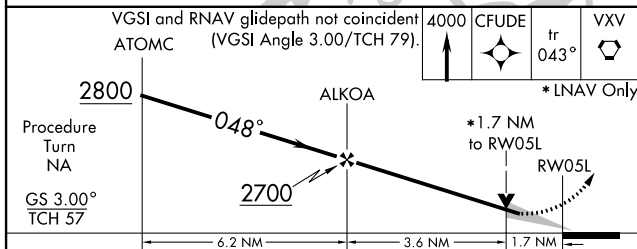


MISSED APPROACH: Climb to 4000 direct CFUDE and via 043° track to VXV VORTAC and hold, continue climb-in-hold to 4000.

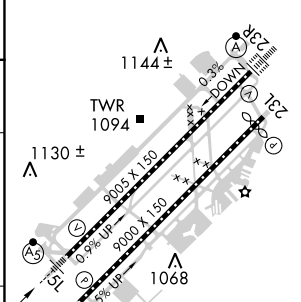
ATIS 128.35	KNOXVILLE APP CON 123.9 360.8	KNOXVILLE TOWER 121.2 257.8	GND CON 121.9 348.6	CLNC DEL 121.65
-----------------------	---	---------------------------------------	-------------------------------	---------------------------



Procedure NA for arrivals at GROSS via V115 Southwest bound.



ELEV 981	D	TDZE 953
----------	----------	----------



CATEGORY	A	B	C	D
LPV DA	1203/24		250 (300-½)	
LNAV/VNAV DA	1326/50		373 (400-1)	
LNAV MDA	1520/24	567 (600-½)	1520/50 567 (600-1)	1520/60 567 (600-1½)
CIRCLING	1520-1½ 539 (600-1½)	1540-1½	559 (600-1½)	1620-2 639 (700-2)

HIRL Rwy 5L-23R
HIRL Rwy 5R-23L
REIL Rwys 5R and 23L
TDZ/CL Rwys 5R and 23R

SE-1, 07 FEB 2013 to 07 MAR 2013

SE-1, 07 FEB 2013 to 07 MAR 2013