

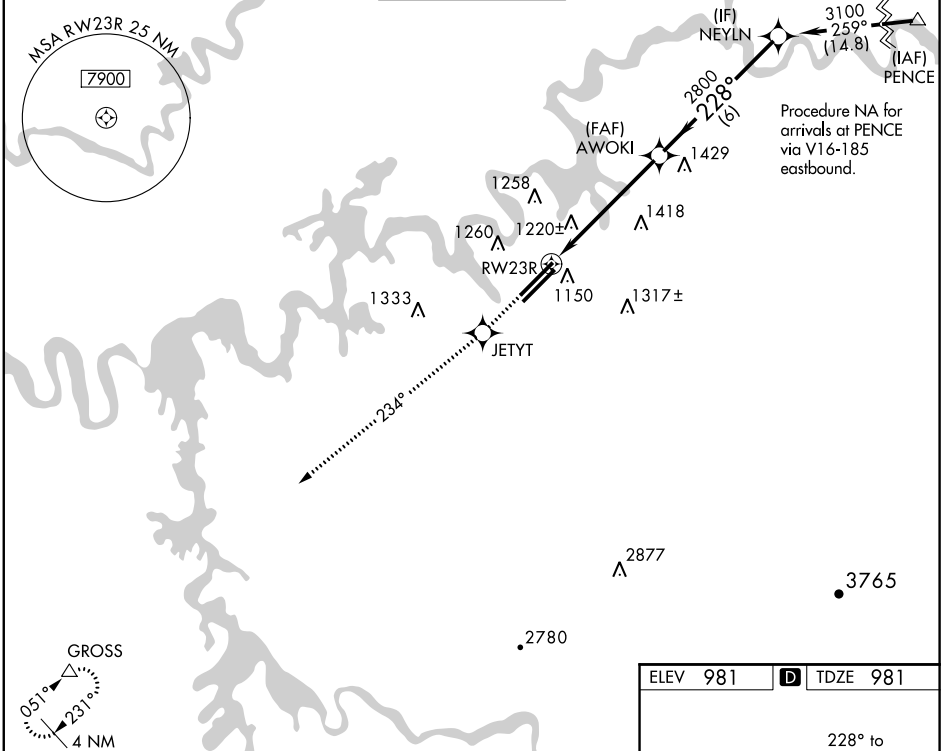
RNAV (GPS) RWY 23R

KNOXVILLE/MCGHEE-TYSON (TYS)

WAAS CH 81902 W23A	APP CRS 228°	Rwy Idg 9005 TDZE 981 Apt Elev 981
--	------------------------	---

<p>⚠ For nonoperative ALSF-2, increase LPV all Cats visibility to RVR 4000. ⚠ For uncompensated Baro-VNAV systems, LNAV/VNAV NA below -16°C (4°F) or above 47°C (116°F). DME/DME RNP-0.3 NA.</p>	<p>ALSF-2 </p>	<p>MISSED APPROACH: Climb to 3000 direct JETYT and via 234° track to GROSS and hold.</p>
---	---------------------	--

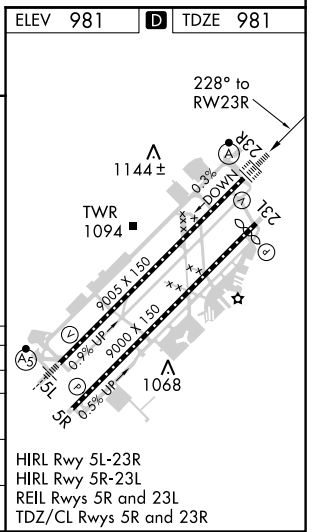
ATIS 128.35	KNOXVILLE APP CON 123.9 360.8	KNOXVILLE TOWER 121.2 257.8	GND CON 121.9 348.6	CLNC DEL 121.65
-----------------------	---	---------------------------------------	-------------------------------	---------------------------



SE-1, 07 FEB 2013 to 07 MAR 2013

SE-1, 07 FEB 2013 to 07 MAR 2013

3000	JETYT	tr 234°	GROSS	VGSI and RNAV glidepath not coincident (VGSI Angle 3.00/TCH 79).	Procedure Turn NA
*LNAV only.					



CATEGORY	A	B	C	D
LPV DA		1231/24	250 (300-1/2)	
LNAV/VNAV DA		1550-1 1/2	569 (600-1 1/2)	
LNAV MDA	1680/24	699 (700-1/2)	1680-1 1/2 699 (700-1 1/2)	1680-1 3/4 699 (700-1 3/4)
CIRCLING		1680-2	699 (700-2)	1680-2 1/4 699 (700-2 1/4)

HIRL Rwy 5L-23R
 HIRL Rwy 5R-23L
 REIL Rwys 5R and 23L
 TDZ/CL Rwys 5R and 23R