

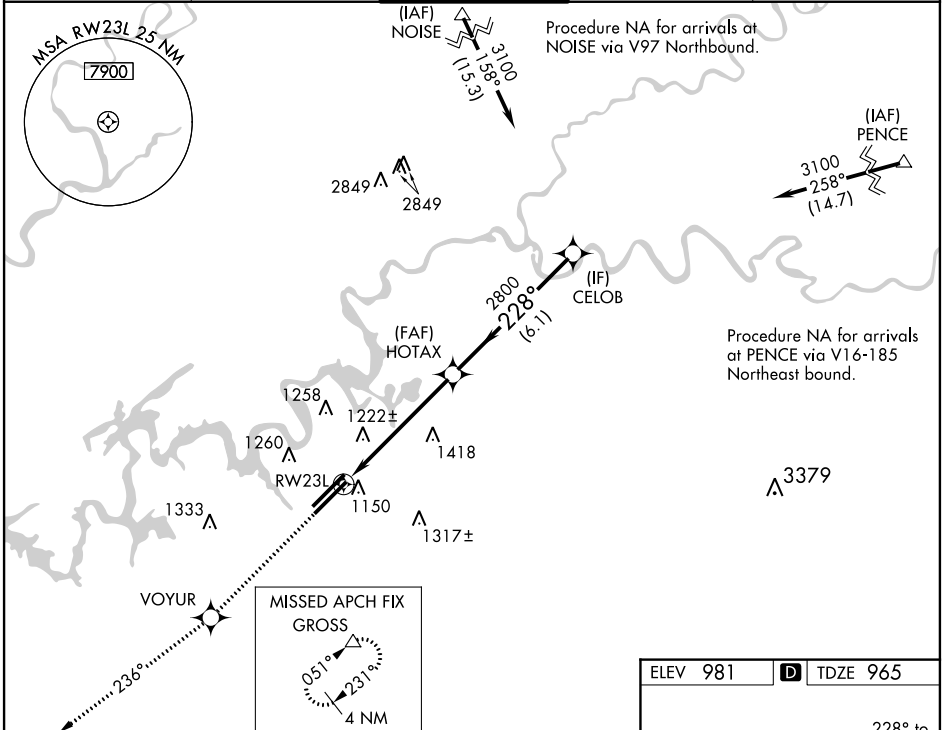
RNAV (GPS) RWY 23L

KNOXVILLE/MCGHEE-TYSON (T'YS)

WAAS CH 90210 W23B	APP CRS 228°	Rwy Idg TDZE Apt Elev	8600 965 981
--	------------------------	-----------------------------	---

ASR	For uncompensated Baro-VNAV systems, LNAV/VNAV NA below -16° C (4° F) or above 47° C (116° F). Visibility reduction by helicopters NA. DME/DME RNP-0.3 NA.	MISSED APPROACH: Climb to 3000 direct VOYUR and via 236° track to GROSS and hold.
------------	--	--

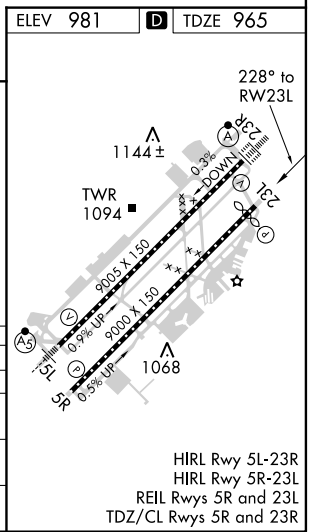
ATIS 128.35	KNOXVILLE APP CON 123.9 360.8	KNOXVILLE TOWER 121.2 257.8	GND CON 121.9 348.6	CLNC DEL 121.65
-----------------------	---	---------------------------------------	-------------------------------	---------------------------



SE-1, 07 FEB 2013 to 07 MAR 2013

SE-1, 07 FEB 2013 to 07 MAR 2013

3000	VOYUR	tr 236°	GROSS	Procedure Turn NA
*LNAV only.				
*1.8 NM to RW23L		HOTAX 2800		3100
RW23L		2800		GS 3.00° TCH 50
1.8 NM		3.8 NM		6.1 NM



CATEGORY	A	B	C	D
LPV DA	1215/40		250 (300-3/4)	
LNAV/VNAV DA	1544-2		579 (600-2)	
LNAV MDA	1580/50	615 (600-1)	1580-1 3/4 615 (600-1 3/4)	1580-2 615 (600-2)
CIRCLING	1580-1	599 (600-1)	1580-1 3/4 599 (600-1 3/4)	1620-2 639 (700-2)