

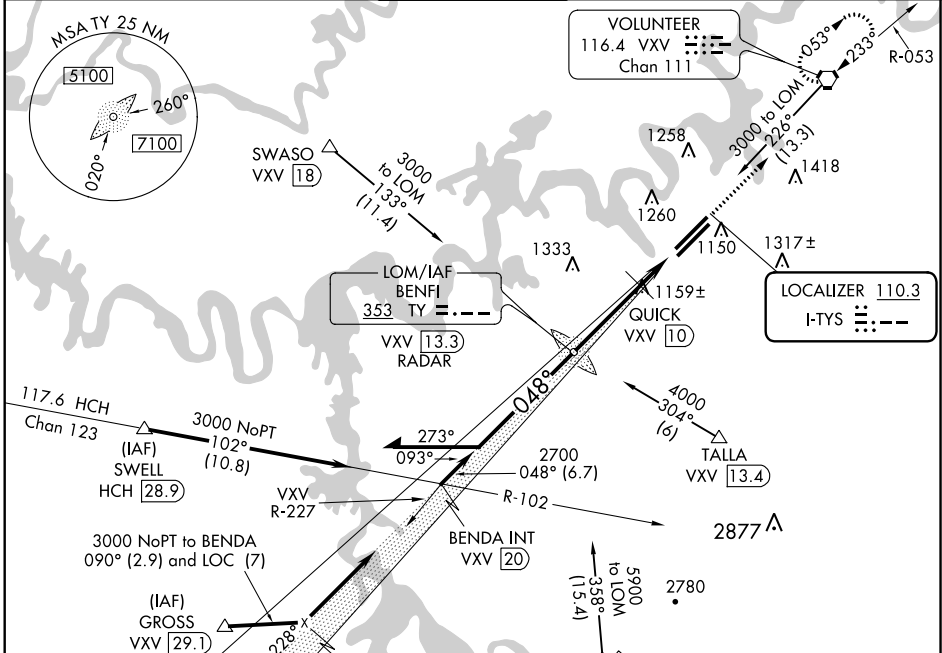
LOC I-TYS <b>110.3</b>	APP CRS <b>048°</b>	Rwy Idg <b>9005</b>
		TDZE <b>953</b>
		Apt Elev <b>981</b>

# ILS or LOC RWY 5L

KNOXVILLE/MCGHEE-TYSON (TYS)

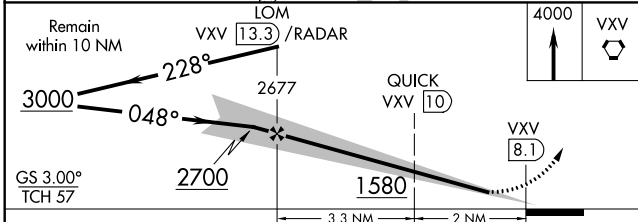
 ASR	*RVR 1800 authorized with use of FD or AP or HUD to DA.	 MALSR	MISSED APPROACH: Climb to 4000 direct VXV VORTAC and hold.
---------	---	-----------	--

ATIS <b>128.35</b>	KNOXVILLE APP CON <b>123.9 360.8</b>	KNOXVILLE TOWER <b>121.2 257.8</b>	GND CON <b>121.9 348.6</b>	CLNC DEL <b>121.65</b>
-----------------------	---	---------------------------------------	-------------------------------	---------------------------

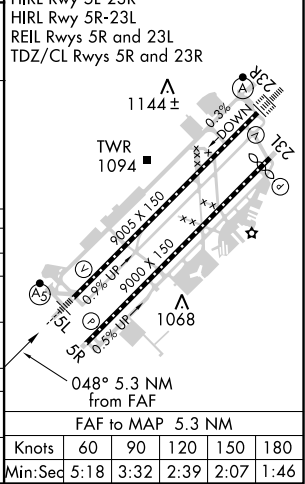


ELEV 981	TDZE 953
----------	----------

HIRL Rwy 5L-23R  
HIRL Rwy 5R-23L  
REIL Rwys 5R and 23L  
TDZ/CL Rwys 5R and 23R



CATEGORY	A	B	C	D
S-ILS 5L		*1153/24	200 (200-½)	
S-LOC 5L	1580/24	627 (600-½)	1580/60 627 (600-1¼)	1580-1½ 627 (600-1½)
CIRCLING	1580-1	599 (600-1)	1580-¾ 599 (600-1¼)	1620-2 639 (700-2)
QUICK FIX MINIMUMS				
S-LOC 5L	1420/24	467 (500-½)	1420/40 467 (500-¾)	1420/50 467 (500-1)
CIRCLING	1460-1 479 (500-1)	1520-1 539 (600-1)	1540-1½ 559 (600-½)	1620-2 639 (700-2)



SE-1, 07 FEB 2013 to 07 MAR 2013

SE-1, 07 FEB 2013 to 07 MAR 2013

Knots	60	90	120	150	180
Min:Seq	5:18	3:32	2:39	2:07	1:46