

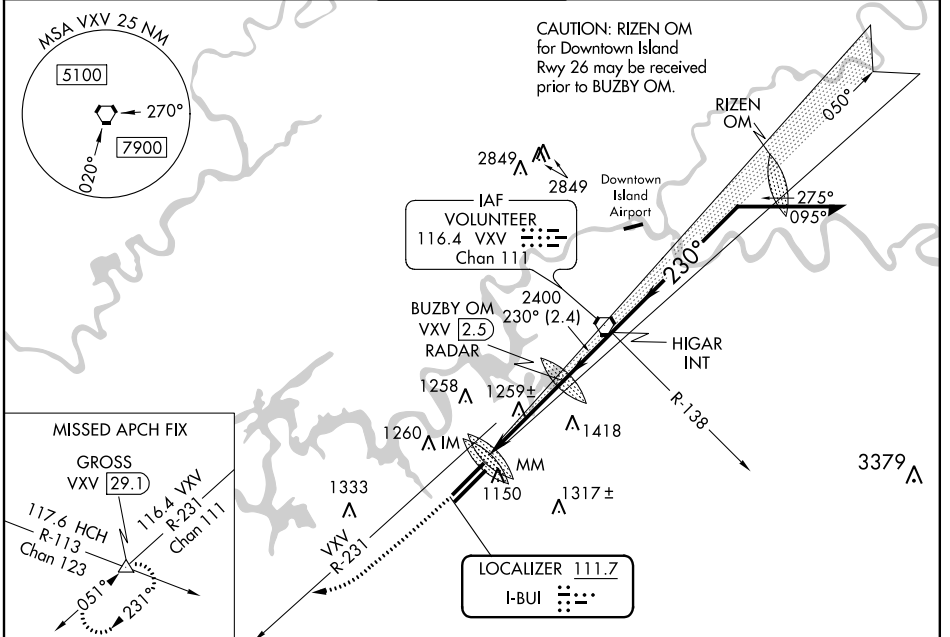
LOC I-BUI 111.7	APP CRS 230°	Rwy ldg 9005 THRE 977 Apt Elev 981
---------------------------	------------------------	--

ILS or LOC RWY 23R

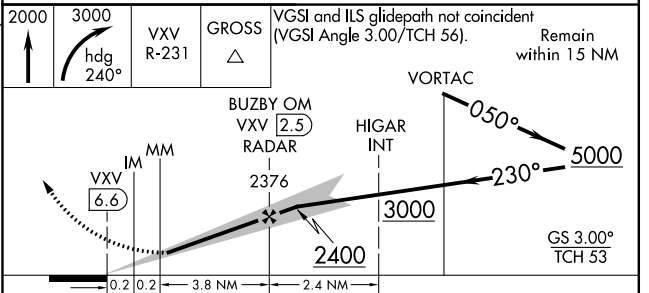
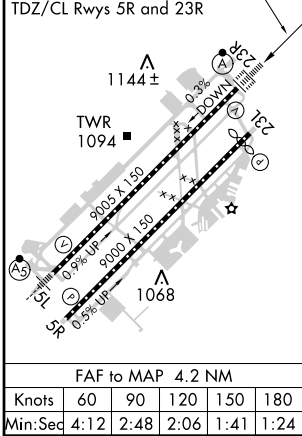
KNOXVILLE/MCGHEE-TYSON (TYS)

	For inoperative ALSIF, increase S-ILS 23R Cat E visibility to RVR 4000 and S-LOC 23R Cat E visibility to 1½.	MISSED APPROACH: Climb to 2000 then climbing right turn to 3000 on heading 240° and VXV VORTAC R-231 to GROSS INT/VXV 29.1 DME and hold.

ATIS 128.35	KNOXVILLE APP CON 123.9 360.8	KNOXVILLE TOWER 121.2 257.8	GND CON 121.9 348.6	CLNC DEL 121.65
-----------------------	---	---------------------------------------	-------------------------------	---------------------------



ELEV 981	D	THRE 977
HIRL Rwy 5L-23R and Rwy 5R-23L 230° 4.2 NM from FAF		
REIL Rwys 5R and 23L		
TDZ/CL Rwys 5R and 23R		



CATEGORY	A	B	C	D	E
S-ILS 23R	1177/18 200 (200-½)				
S-LOC 23R	1520/24	543 (600-½)	1520/60	543 (600-1¼)	
CIRCLING	1520-1 539 (600-1)	1540-1 559 (600-1)	1700-1½ 719 (800-1½)	1700-2¼ 719 (800-2¼)	1900-3 919 (1000-3)

SE-1, 07 FEB 2013 to 07 MAR 2013

SE-1, 07 FEB 2013 to 07 MAR 2013