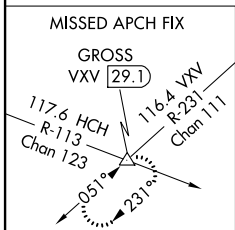
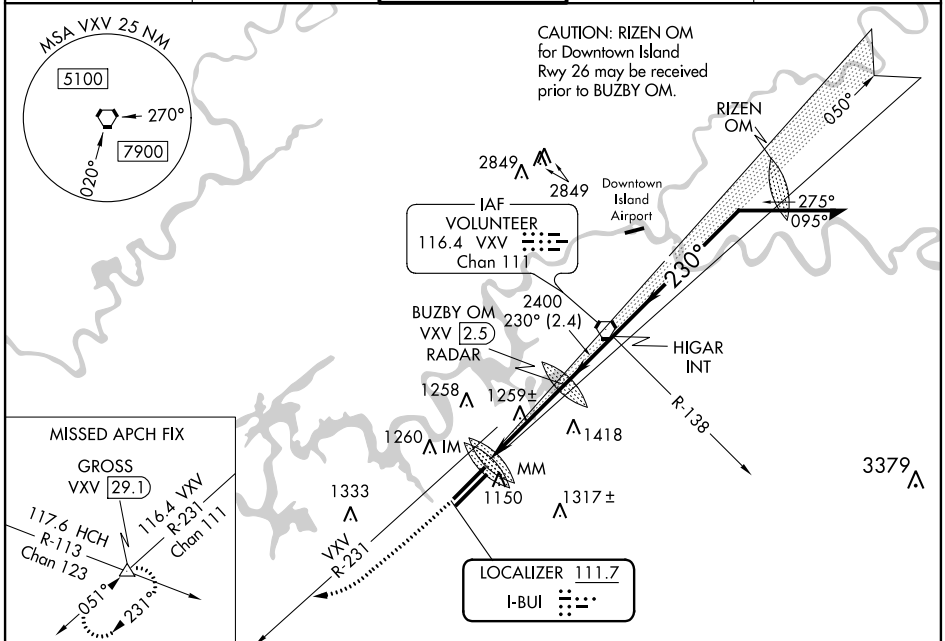


LOC I-BUI 111.7	APP CRS 230°	Rwy ldg THRE Apt Elev	9005 977 981
---------------------------	------------------------	-----------------------------	---

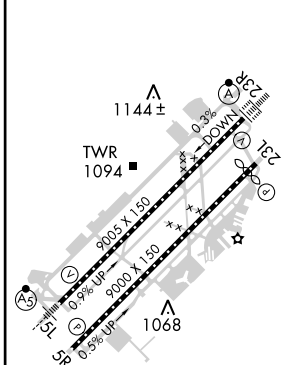
ILS RWY 23R (SA CAT I)
KNOXVILLE/MCGHEE-TYSON (TYS)

<p>Requires specific OPSPEC, MSPEC or LOA approval and use of HUD to DH.</p>	<p>ALSF-2</p>	<p>MISSED APPROACH: Climb to 2000 then climbing right turn to 3000 on heading 240° and VXV VORTAC R-231 to GROSS INT/VXV 29.1 DME and hold.</p>
--	---------------	---

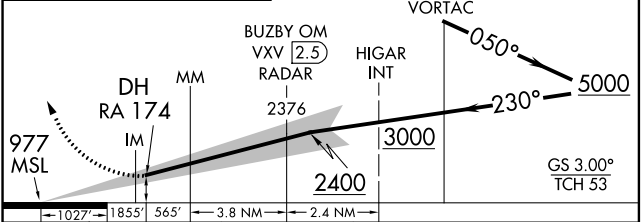
ATIS 128.35	KNOXVILLE APP CON 123.9 360.8	KNOXVILLE TOWER 121.2 257.8	GND CON 121.9 348.6	CLNC DEL 121.65
-----------------------	---	---------------------------------------	-------------------------------	---------------------------



ELEV 981	D	THRE 977
----------	----------	----------



2000	3000	VXV R-231	GROSS Δ	VGSI and ILS glidepath not coincident (VGSI Angle 3.00/TCH 56). Remain within 15 NM
\uparrow	hdg 240°			



CATEGORY	A	B	C
S-ILS 23R	RA 174/14 150 DA 1127		

SA CATEGORY I ILS- SPECIAL AIRCREW & AIRCRAFT CERTIFICATION REQUIRED

HIRL Rwy 5L-23R and Rwy 5R-23L
REIL Rwys 5R and 23L
TDZ/CL Rwys 5R and 23R

SE-1, 07 FEB 2013 to 07 MAR 2013

SE-1, 07 FEB 2013 to 07 MAR 2013