

KNOXVILLE, TENNESSEE

# HI-VOR/DME or TACAN RWY 5L

VORTAC VXV 116.4 Chan 111	APCH CRS 045°	Rwy ldg TDZE 9005 953 Arpt Elev 981
---------------------------------	------------------	----------------------------------------------------

JAL-218 [USAF]

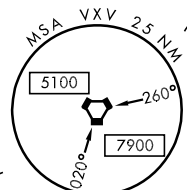
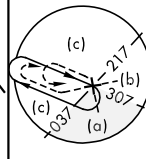
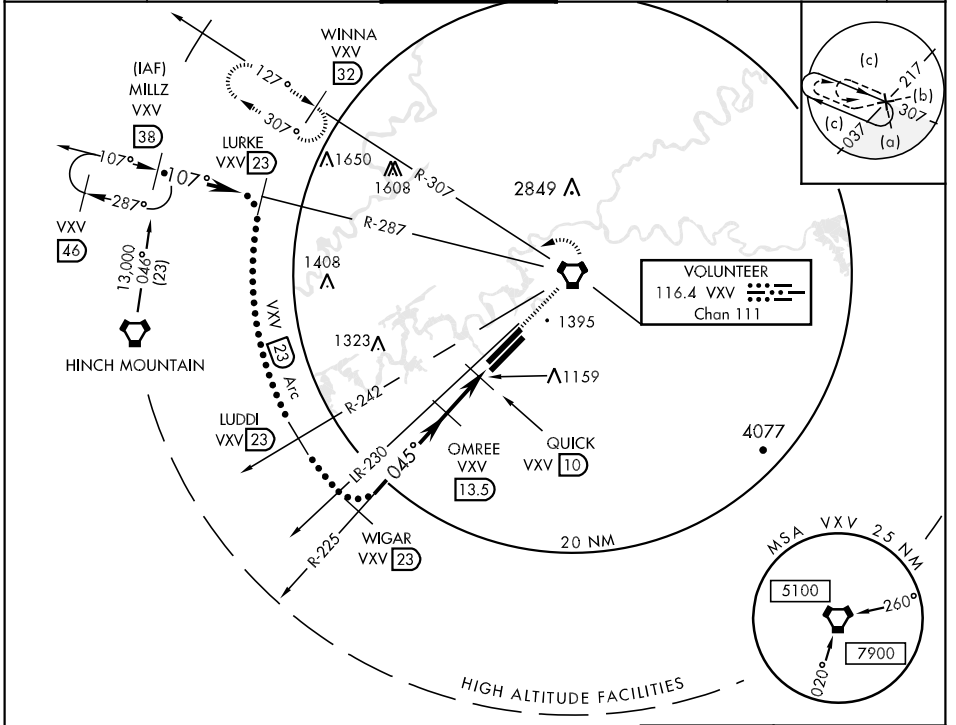
KNOXVILLE/ McGHEE TYSON (KTYS)

▼ \* When ALS inop, increase CAT C vis to 1¼ mile, CAT D vis to 1½ miles, CAT E vis to 1¾ miles.

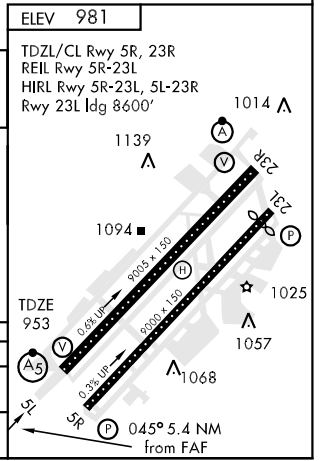
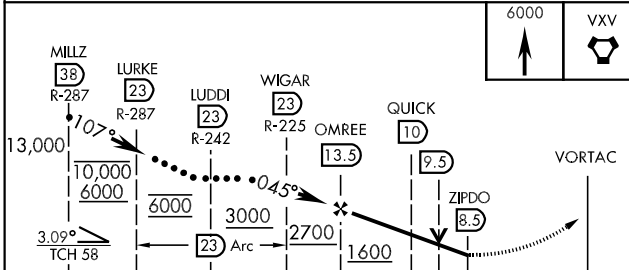


MISSED APPROACH: Climb to 6000 direct to VXV VORTAC. At VXV VORTAC, turn left via VXV R-307 to WINNA INT (VXV R-307/32 DME) and hold.

ATIS ★ 128.35	KNOXVILLE APP CON 118.0 360.8	KNOXVILLE TOWER 121.2 257.8	GND CON 121.9 348.6	CLNC DEL 121.65	ASR
------------------	----------------------------------	--------------------------------	------------------------	--------------------	-----



EMERG SAFE ALT 100 NM 8800



CATEGORY	C	D	E
S-5L*	1420/40 467 (500-¾)	1420/50 467 (500-1)	1420/60 467 (500-1¼)
CIRCLING	1540-1½ 559 (600-1½)	1620-2 639 (700-2)	1900-3 919 (1000-3)

KNOXVILLE, TENNESSEE  
Amdt 3 11181

35°49'N-84°00'W

KNOXVILLE/ McGHEE TYSON (KTYS)

# HI-VOR/DME or TACAN RWY 5L

SE-1, 07 FEB 2013 to 07 MAR 2013

SE-1, 07 FEB 2013 to 07 MAR 2013