

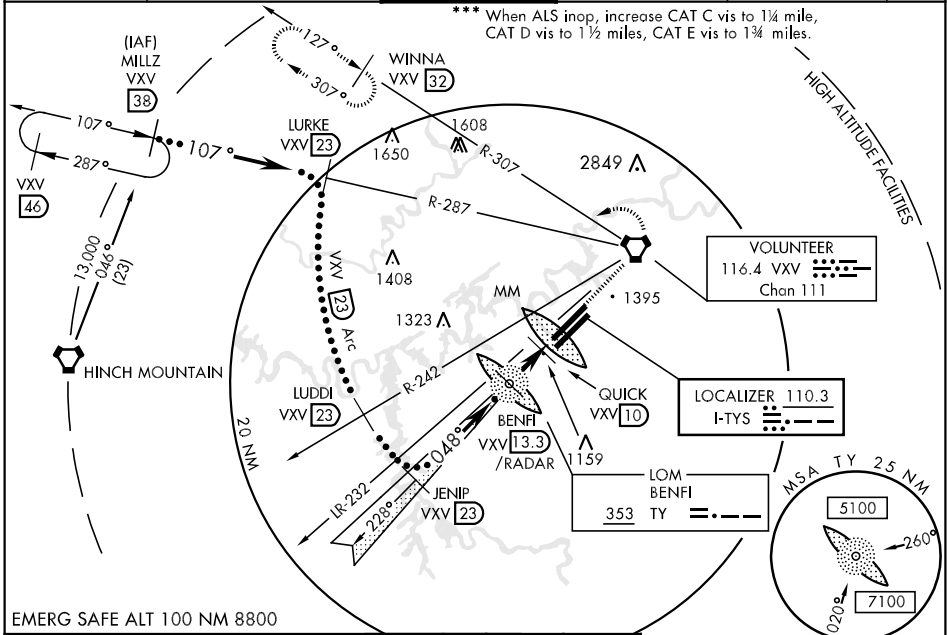
LOC I-TYS 110.3	APCH CRS 048°	Rwy ldg TDZE Arpt Elev 9005 953 981	JAL-218 [USAF]	KNOXVILLE/ McGHEE TYSON (KTYS)
---------------------------	-------------------------	---	----------------	--------------------------------

* When ALS inop, increase CAT CDE vis to 3/4 mile.
 ** When ALS inop, increase CAT C vis to 1 1/4 mile, CAT D vis to 2 miles, CAT E vis to 2 1/4 miles.

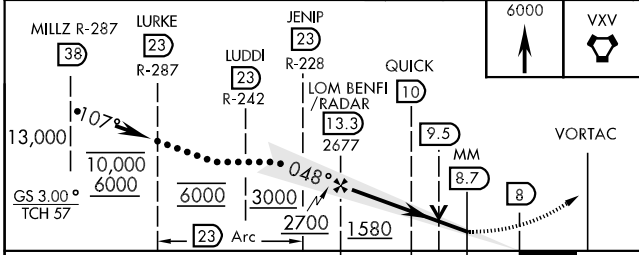
MALSR **MISSSED APPROACH:** Climb to 6000 direct to VXV VORTAC. At VXV VORTAC, turn left to via VXV R-307 to WINNA INT (VXV R-307/32 DME) and hold.

ATIS * 128.35	KNOXVILLE APP CON 118.0 360.8	KNOXVILLE TOWER 121.2 257.8	GND CON 121.9 348.6	CLNC DEL 121.65	ASR
-------------------------	---	---------------------------------------	-------------------------------	---------------------------	-----

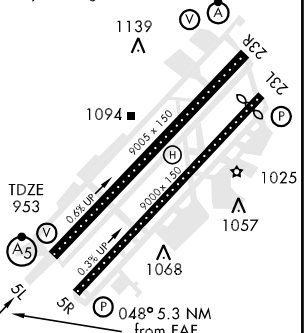
*** When ALS inop, increase CAT C vis to 1 1/4 mile, CAT D vis to 1 1/2 miles, CAT E vis to 1 3/4 miles.



EMERG SAFE ALT 100 NM 8800



ELEV 981	TDZL/CL Rwy 5R, 23R
	REIL Rwy 5R-23L
	HIRL Rwy 5R-23L, 5L-23R
	Rwy 23L ldg 8600'



CATEGORY	C	D	E
S-ILS 5L *	1153/18 200	(200-1/2)	1153/24 200 (200-1/2)
S-LOC 5L **	1580/60 627 (700-1 1/4)	1580-1 1/2 627 (700-1 1/2)	1580-1 3/4 627 (700-1 3/4)
CIRCLING	1580-1 3/4 599 (600-1 3/4)	1620-2 639 (700-2)	1900-3 919 (1000-3)
QUICK FIX MINIMUMS			
S-LOC 5L ***	1420/40 467 (500-3/4)	1420/50 467 (500-1)	1420/60 467 (500-1 1/4)
CIRCLING	1540-1 1/2 559 (600-1 1/2)	1620-2 639 (700-2)	1900-3 919 (1000-3)

FAF to MAP 5.3 NM					
Knots	120	140	160	180	200
Min:Sec	2:39	2:16	1:59	1:46	1:35

SE-1, 07 FEB 2013 to 07 MAR 2013

SE-1, 07 FEB 2013 to 07 MAR 2013