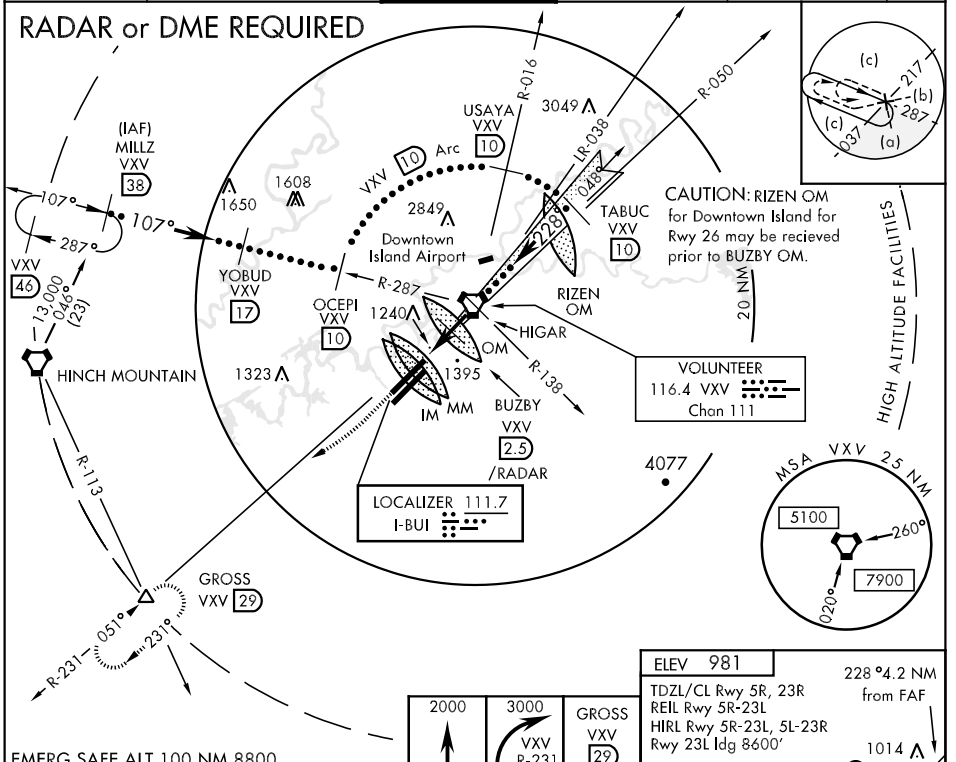


LOC I-BUI 111.7	APCH CRS 228°	Rwy ldg TDZE Arpt Elev 9005 981 981	JAL-218 [USAF]	KNOXVILLE/ McGHEE TYSON (KTYS)
---------------------------	-------------------------	--	----------------	--------------------------------

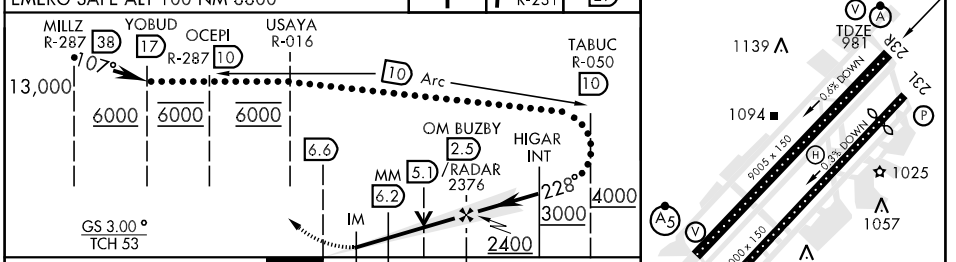
ALS-2 A MISSED APPROACH: Climb to 2000, then climbing right turn to 3000 via heading 240° to intercept VXX R-231 direct GROSS INT/ 29 DME and hold.

ATIS * 128.35	KNOXVILLE APP CON 118.0 360.8	KNOXVILLE TOWER 121.2 257.8	GND CON 121.9 348.6	CLNC DEL 121.65	ASR
-------------------------	---	---------------------------------------	-------------------------------	---------------------------	-----



SE-1, 07 FEB 2013 to 07 MAR 2013

SE-1, 07 FEB 2013 to 07 MAR 2013



CATEGORY	C		D		E	
	1181/18	200	(200-1/2)	1181/24	200 (200-1/2)	
S-ILS 23R*	1520/50	539 (600-1)	1520/60	539 (600-1 1/4)	1520-1 1/2	539 (600-1 1/2)
S-LOC 23R**	1540-1 1/2	559 (600-1 1/2)	1620-2	639 (700-2)	1900-3	919 (1000-3)
FAF to MAP 4.2 NM						
Knots	120	140	160	180	200	
Min:Sec	2:06	1:48	1:35	1:24	1:16	