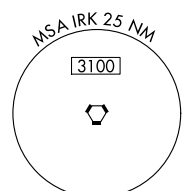
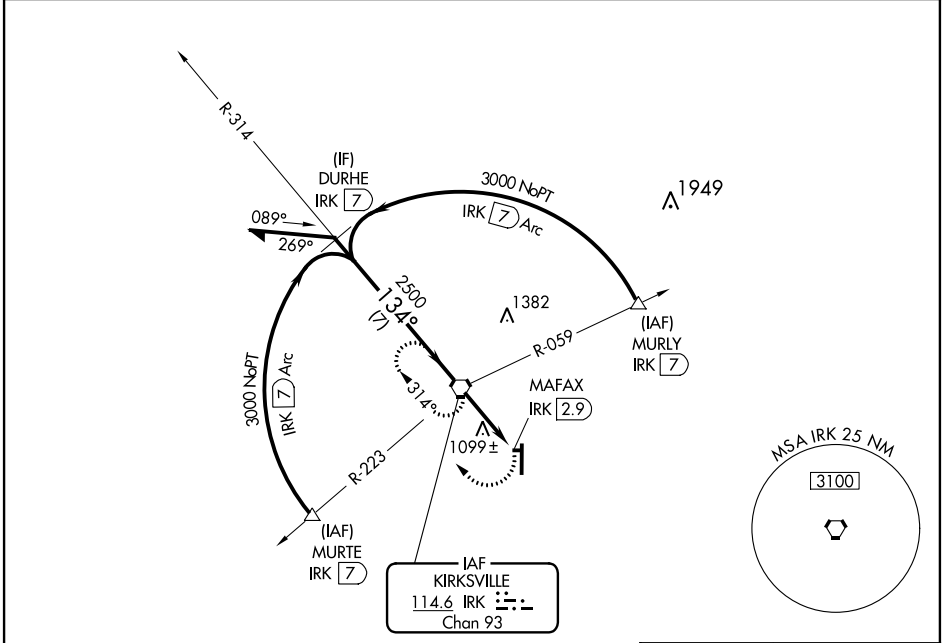


VORTAC IRK <b>114.6</b> Chan <b>93</b>	APP CRS <b>134°</b>	Rwy Idg TDZE Apt Elev <b>N/A</b> <b>N/A</b> <b>966</b>
--	------------------------	---

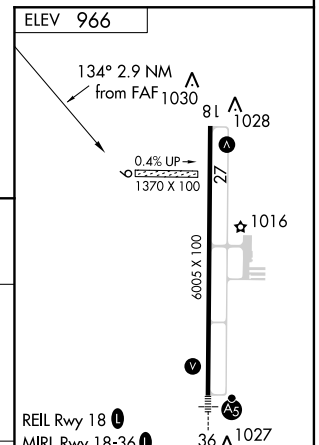
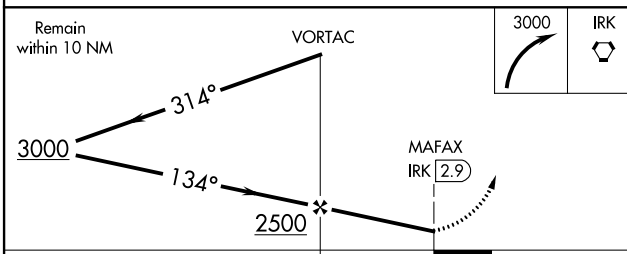
⚠ When local altimeter setting not received, use Ottumwa Rgnl altimeter setting and increase all MDA 160 feet, increase Cats C and D visibility ¼ mile.

⚠ MISSED APPROACH: Climbing right turn to 3000 direct IRK VORTAC and hold, continue climb-in-hold to 3000.

ASOS <b>121.125</b>	KANSAS CITY CENTER <b>132.6 370.9</b>	UNICOM <b>122.8 (CTAF) 0</b>
------------------------	--	---------------------------------



NoPT for arrivals at IRK VORTAC on airway radials 259 CW 007.



CATEGORY	A	B	C	D	FAF to MAP 2.9 NM					
	1400-1 434 (500-1)	1420-1 454 (500-1)	1420-1½ 454 (500-1½)	1520-2 554 (600-2)	Knots	60	90	120	150	180
CIRCLING					Min:Sec	2:54	1:56	1:27	1:10	0:58

NC-3, 07 FEB 2013 to 07 MAR 2013

NC-3, 07 FEB 2013 to 07 MAR 2013