


RNAV (GPS) RWY 36

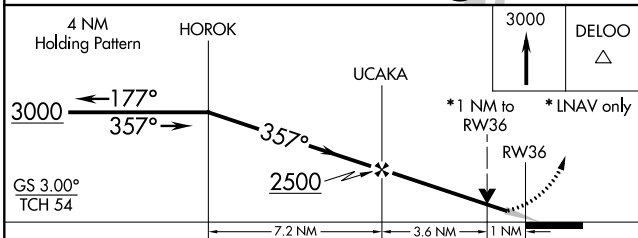
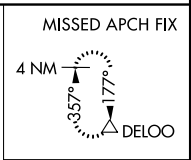
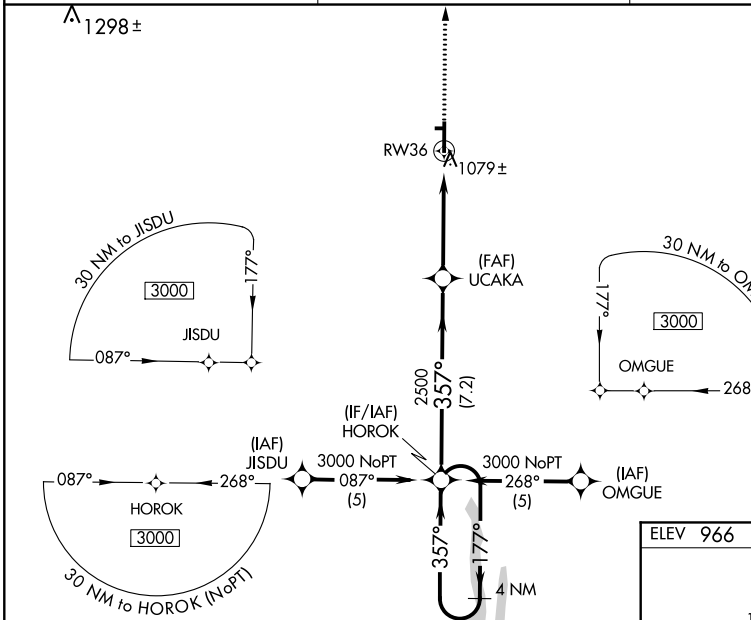
KIRKSVILLE RGNL (IRK)

WAAS CH 70513 W36A	APP CRS 357°	Rwy Idg 6005 TDZE 965 Apt Elev 966
----------------------------------------	------------------------	---------------------------------------------------------------

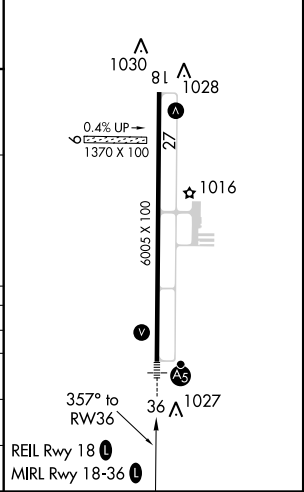
⚠ Baro-VNAV NA when using Ottumwa Rgnl altimeter setting.
 For uncompensated Baro-VNAV systems, LNAV/VNAV NA below -16°C (4°F) or above 46°C (114°F). DME/DME RNP-0.3 NA.
 When local altimeter setting not received, use Ottumwa Rgnl altimeter setting and increase all DA 158 feet, and all MDA 160 feet; increase LPV all Cats; LNAV Cat D, and Circling Cat C and D visibility ¼ mile, LNAV/VNAV all Cats visibility ¾ mile, LNAV Cat C visibility ½ mile.
 VDP NA when using Ottumwa Rgnl altimeter setting.
 For inoperative MALS, when using Ottumwa Rgnl altimeter setting increase LPV all Cats visibility to 1¼, and LNAV Cat D visibility to 1¾.

MALS R

MISSED APPROACH: Climb to 3000 direct DELOO and hold.

ASOS 121.125	KANSAS CITY CENTER 132.6 370.9	UNICOM 122.8 (CTAF) Ⓛ
------------------------	------------------------------------------	----------------------------------------



ELEV 966	TDZE 965
----------	----------



CATEGORY	A	B	C	D
LPV DA		1165-½	200 (200-½)	
LNAV/ VNAV DA		1349-¾	384 (400-¾)	
LNAV MDA	1340-½	375 (400-½)		1340-1 375 (400-1)
CIRCLING	1400-1 434 (500-1)	1420-1 454 (500-1)	1420-1½ 454 (500-1½)	1520-2 554 (600-2)

NC-3, 07 FEB 2013 to 07 MAR 2013

NC-3, 07 FEB 2013 to 07 MAR 2013