

KIRKSVILLE, MISSOURI

AL-217 (FAA)

RNAV (GPS) RWY 18

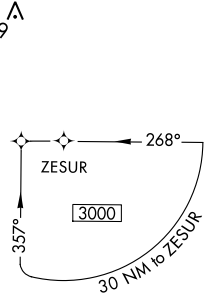
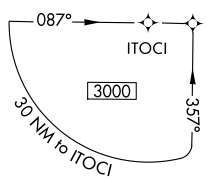
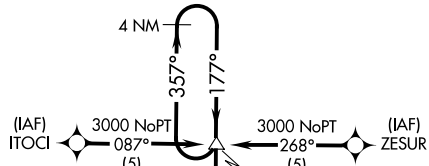
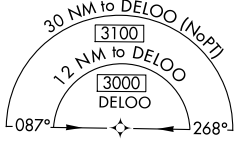
KIRKSVILLE RGNL (IRK)

APP CRS	Rwy Idg	6005
177°	TDZE	966
	Apt Elev	966

⚠ DME/DME RNP-0.3 NA. Visibility reduction by helicopters NA.
⚠ VDP NA when using Ottumwa Rgnl altimeter setting.
 When local altimeter setting not received, use Ottumwa Rgnl altimeter setting and increase all MDA 160 feet; increase LNAV Cats C and D visibility ½ mile, and Circling Cats C and D visibility ¼ mile.

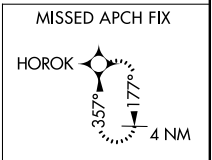
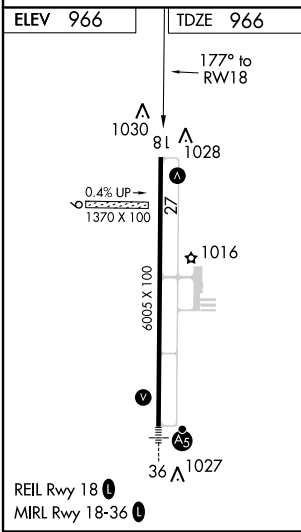
MISSED APPROACH: Climb to 3000 direct HOROK and hold.

ASOS 121.125	KANSAS CITY CENTER 132.6 370.9	UNICOM 122.8 (CTAF) 0
------------------------	--	---------------------------------

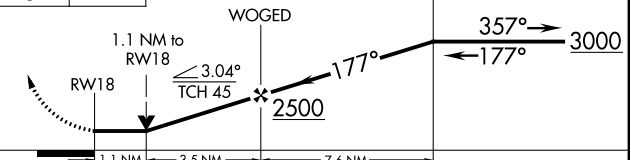


NC-3, 07 FEB 2013 to 07 MAR 2013

NC-3, 07 FEB 2013 to 07 MAR 2013



3000 HOROK VGSI and descent angles not coincident (VGSI Angle 3.00/TCH 33). 4 NM Holding Pattern



CATEGORY	A	B	C	D
LNAV MDA	1340-1 374 (400-1)			1340-1¼ 374 (400-1¼)
CIRCLING	1400-1 434 (500-1)	1420-1 454 (500-1)	1420-1½ 454 (500-1½)	1520-2 554 (600-2)

KIRKSVILLE, MISSOURI
 Amdt 2 13010

40°06'N-92°33'W

RNAV (GPS) RWY 18