

# ILS or LOC/DME RWY 36

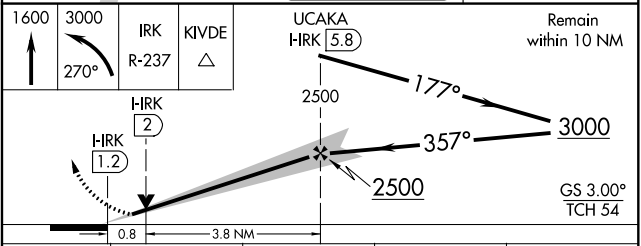
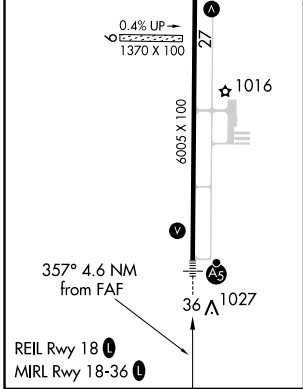
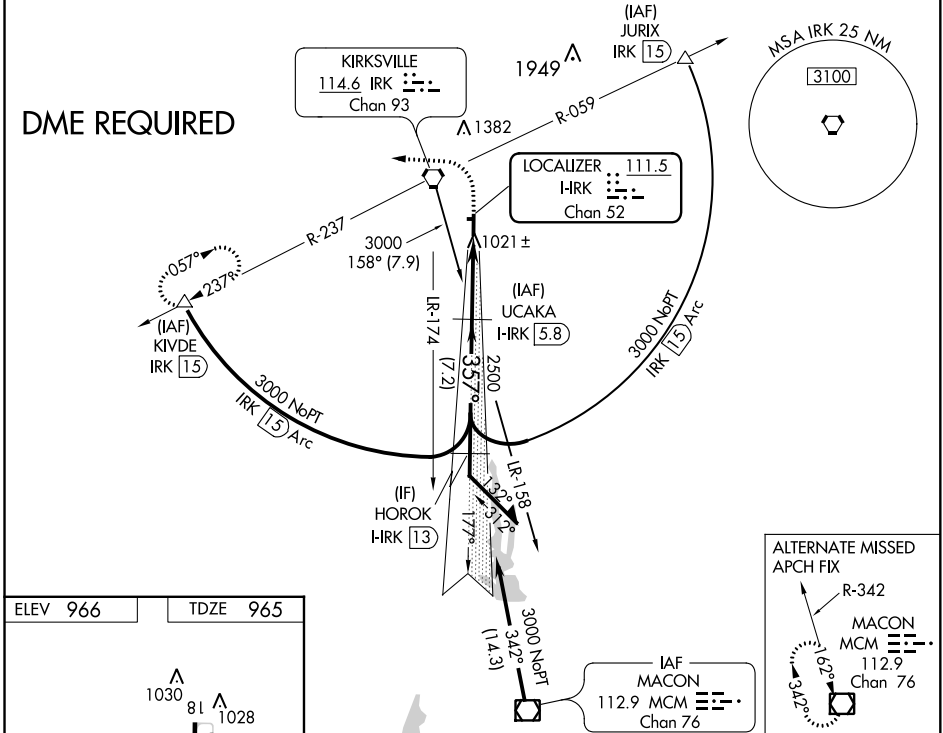
KIRKSVILLE RGNL (IRK)

LOC/DME I-IRK <b>111.5</b> Chan 52	APP CRS <b>357°</b>	Rwy Idg TDZE Apt Elev	<b>6005</b> <b>965</b> <b>966</b>
--	------------------------	-----------------------------	---

**⚠** When local altimeter setting not received, use Ottumwa Rgnl altimeter setting and increase all DA 1.58 feet, and all MDA 160 feet; increase S-ILS 36 all Cats, S-LOC 36 Cats C and D and Circling Cats C and D visibility ¼ mile. VDP NA when using Ottumwa Rgnl altimeter setting. For inoperative MALSR when using Ottumwa Rgnl altimeter setting, increase S-ILS 36 all Cats visibility ¼ mile, and S-LOC 36 Cat D visibility to 1½. DME Required. For inoperative MALSR, increase S-LOC 36 Cat D visibility ¼ mile.

**MALSR**  
MISSED APPROACH: Climb to 1600 then climbing left turn to 3000 via heading 270° and IRK VORTAC 237 to KIVDE/IRK 1.5 DME and hold.

ASOS <b>121.125</b>	KANSAS CITY CENTER <b>132.6 370.9</b>	UNICOM <b>122.8 (CTAF)</b>
------------------------	--	-------------------------------



CATEGORY	A	B	C	D
S-ILS 36	1165-½ 200 (200-½)			
S-LOC 36	1280-½ 315 (400-½)			1280-¾ 315 (400-¾)
CIRCLING	1400-1 434 (500-1)	1420-1 454 (500-1)	1420-1½ 454 (500-1½)	1520-2 554 (600-2)

NC-3, 07 FEB 2013 to 07 MAR 2013

NC-3, 07 FEB 2013 to 07 MAR 2013