

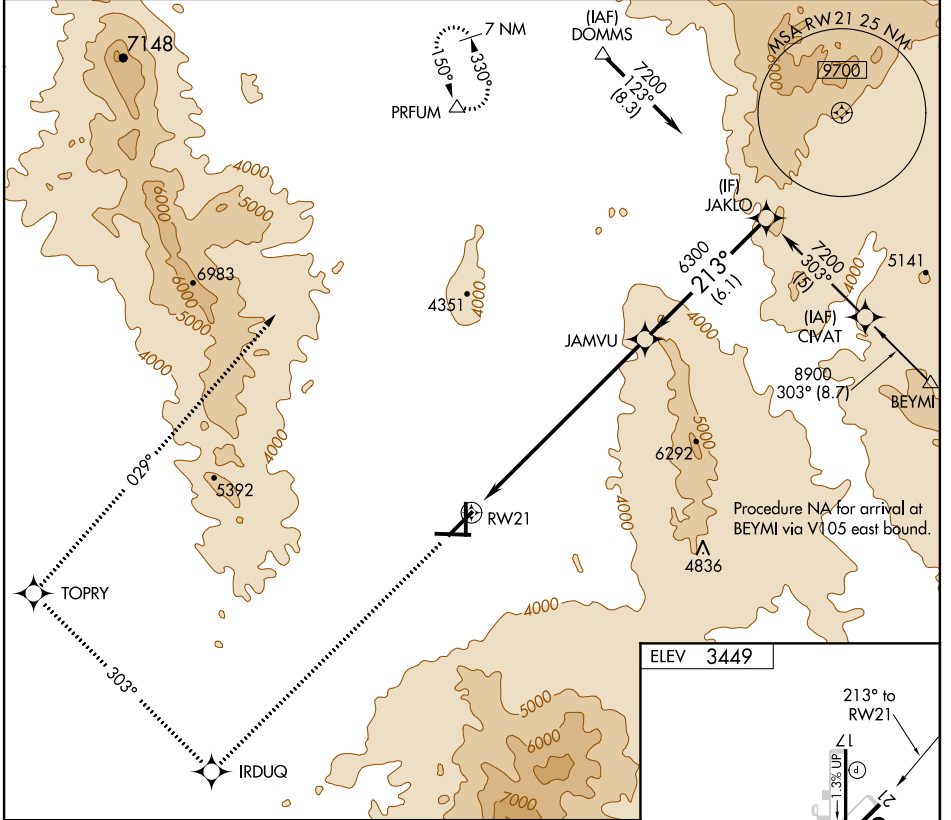
WAAS CH 70612 W21A	APP CRS 213°	Rwy Idg TDZE Apt Elev	6827 3403 3449
----------------------------------------	------------------------	-----------------------------	-------------------------------------------

RNAV (GPS) Z RWY 21

KINGMAN (IGM)

▽ DME/DME RNP-0.3 NA.	MISSED APPROACH: Climb to 9000 direct IRDUQ and via track 303° to TOPRY and via track 029° to PRFUM and hold.
△ NA Visibility reduction by helicopters NA.	

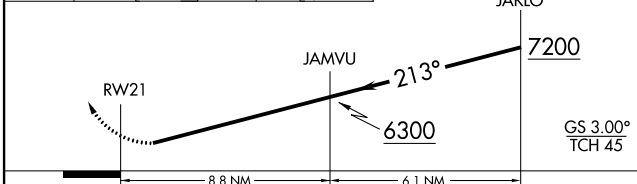
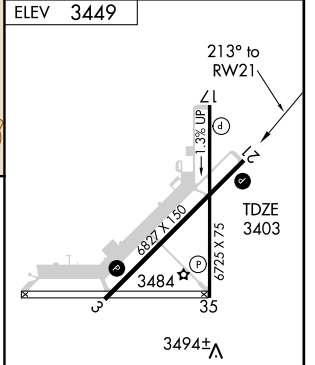
ASOS 119.275	PRESCOTT RADIO 122.1R	UNICOM 122.8 (CTAF) 0
------------------------	---------------------------------	----------------------------------------



SW-4, 07 FEB 2013 to 07 MAR 2013

SW-4, 07 FEB 2013 to 07 MAR 2013

9000	IRDUQ	tr 303°	TOPRY	tr 029°	PRFUM	Procedure Turn NA
↑	✧		✧		△	



CATEGORY	A	B	C	D
LPV DA		3653-1	250 (300-1)	

REIL Rwy 3 and 21 **0**
MIRL Rwy 3-21 and 17-35 **0**