

VRGAS ONE DEPARTURE (VRGAS1.VRGAS)

SHL-214 [USN]

KEY WEST, FLORIDA

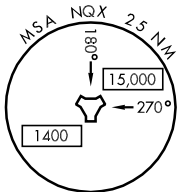
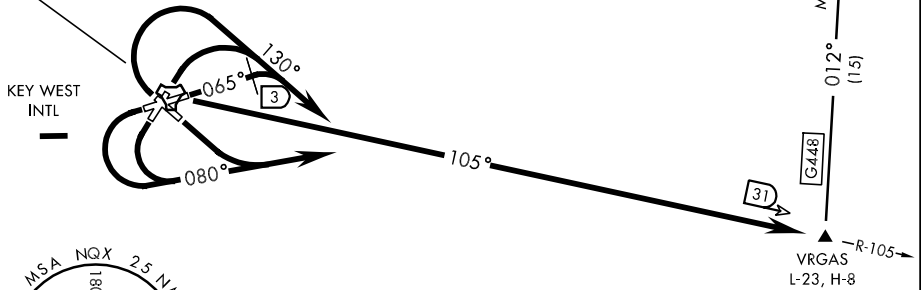
ATIS ★ 307.025
 CLNC DEL
 121.2 357.4
 GND CON
 121.7 336.45
 NAVY KEY WEST TOWER ★
 118.575 340.25
 NAVY KEY WEST DEP CON
 124.025 313.7

MARATHON
 260 MTH

R2916
 1049

CAUTION:
 Balloon with
 strobe light on
 unmarked cable to
 14,000 in R-2916

KEY WEST
 Chan 78 NQX



TACAN REQUIRED

EMERG SAFE ALT 100 NM 15,000

W-174C

CHART NOT TO SCALE

DEPARTURE ROUTE DESCRIPTION

TAKE-OFF RWY 3, 31: Climbing right turn to heading 130°, thence...

TAKE-OFF RWY 13, 21, 25: Climbing left turn to heading 080°, thence...

TAKE-OFF RWY 7: Crossing DER climb on heading 065°, passing NQX TACAN 3 DME, turn right to heading 130°, thence...

...intercept NQX R-105 to VRGAS, then via assigned transition or route.

MARATHON TRANSITION (VRGAS1.MTH): Via heading 012° on G448 to MTH NDB.

VRGAS ONE DEPARTURE (VRGAS1.VRGAS)

KEY WEST, FLORIDA

KEY WEST NAS (BOCA CHICA FLD) (KNQX)

SE-3, 07 FEB 2013 to 07 MAR 2013

SE-3, 07 FEB 2013 to 07 MAR 2013