

KEY WEST, FLORIDA

VOR/DME or TACAN Z RWY 7

EYW VORTAC 113.5 Chan 82	APCH CRS 098°	Rwy Idg 10,001 TDZE 4 Arpt Elev 6
--	-------------------------	--

AL-214 [USN]

KEY WEST NAS (BOCA CHICA FLD) (KNQX)

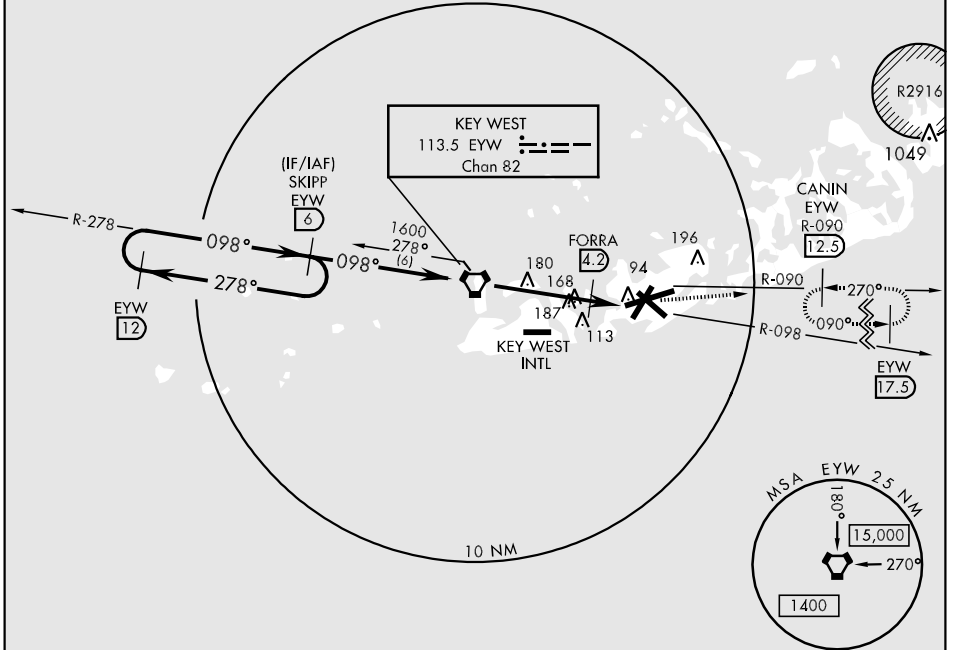
▼ * When ALS inop, increase vis CAT D to 1¼ miles.
When VGSI inop, procedure not authorized at night.



MISSED APPROACH: Climbing left turn to 1600 to intercepted EYW R-090 to CANIN and hold.

ATIS * 307.025	NAVY KEY WEST APP CON 124.025 313.7	NAVY KEY WEST TOWER * 118.575 340.25	GND CON 121.7 336.45	CLNC DEL 121.2 357.4	ASR/PAR
--------------------------	---	--	--------------------------------	--------------------------------	---------

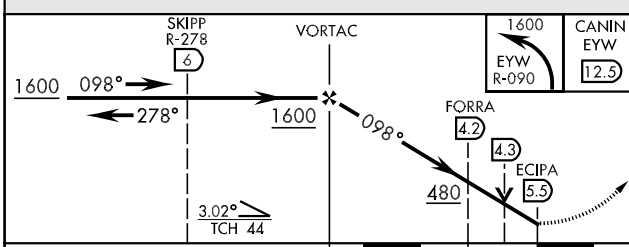
CAUTION: Balloon with strobe light on unmarked cable to 14,000 in R-2916.



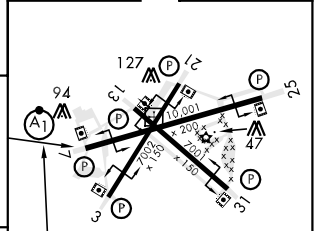
SE-3, 07 FEB 2013 to 07 MAR 2013

SE-3, 07 FEB 2013 to 07 MAR 2013

EMERG SAFE ALT 100 NM 15,000



ELEV 6	TDZE 4
--------	--------



CATEGORY	A	B	C	D
S-7 *	360-1	356 (400-1)		
CIRCLING	440-1 434 (500-1)	500-1 494 (500-1)	500-1½ 494 (500-1½)	560-2 554 (600-2)

098° 5.5 NM from FAF
HIRL all Rwy

KEY WEST, FLORIDA
Amdt 1 12096

24°35'N-81°41'W KEY WEST NAS (BOCA CHICA FLD) (KNQX)

VOR/DME or TACAN Z RWY 7