

KEY WEST, FLORIDA

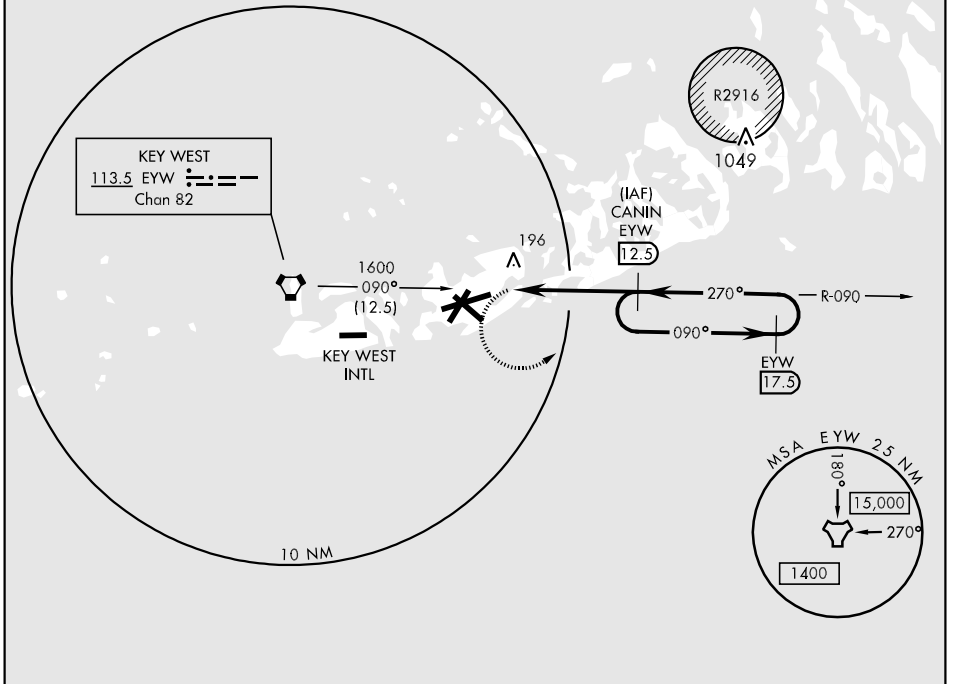
VOR/DME RWY 25

EYW VORTAC 113.5 Chan 82	APCH CRS 270°	Rwy Idg 10,001 TDZE 5 Arpt Elev 6	AL-214 [USN]	KEY WEST NAS (BOCA CHICA FLD) (KNQX)
--	-------------------------	--	--------------	--------------------------------------

▽ MISSED APPROACH: Climbing left turn to 1600 to intercept EYW R-090 to CANIN and hold.

ATIS ★ 307.025	NAVY KEY WEST APP CON 124.025 313.7	NAVY KEY WEST TOWER ★ 118.575 340.25	GND CON 121.7 336.45	CLNC DEL 121.2 357.4	ASR/PAR
--------------------------	---	--	--------------------------------	--------------------------------	---------

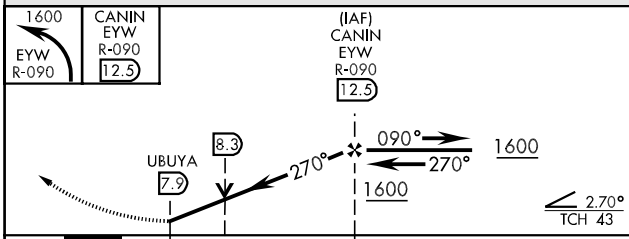
CAUTION: Balloon with strobe light on unmarked cable to 14,000 in R-2916.



SE-3, 07 FEB 2013 to 07 MAR 2013

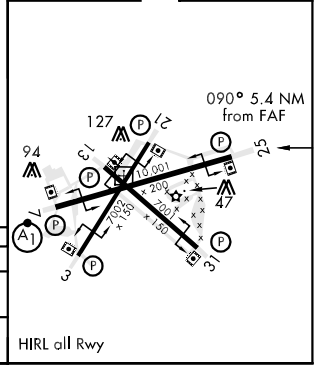
SE-3, 07 FEB 2013 to 07 MAR 2013

EMEG SAFE ALT 100 NM 15,000



ELEV 6	TDZE 5
--------	--------

CATEGORY	A	B	C	D
S-25	460-1	455 (500-1)	460-1¼ 455 (500-1¼)	460-1½ 455 (500-1½)
CIRCLING	460-1 454 (500-1)	500-1 494 (500-1)	500-1½ 494 (500-1½)	560-2 554 (600-2)



KEY WEST, FLORIDA 24°35'N-81°41'W KEY WEST NAS (BOCA CHICA FLD) (KNQX)

Amdt 1 12096

VOR/DME RWY 25