

TACAN NQX Chan <b>78</b>	APCH CRS <b>068°</b>	Rwy Idg TDZE Arpt Elev	<b>10,001</b> <b>4</b> <b>6</b>
-----------------------------	-------------------------	------------------------------	---------------------------------------

AL-214 [USN]

KEY WEST NAS (BOCA CHICA FLD) (KNQX)

▼ \* When ALS inop, increase vis CAT ABC to 1 mile, CAT D to 1¼ miles.

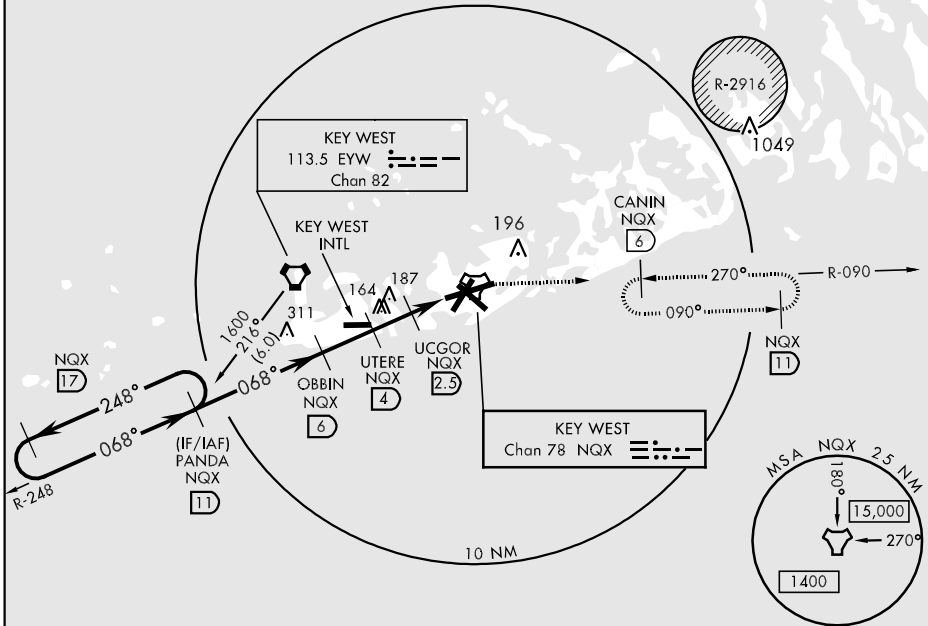


MISSED APPROACH: Climb to 1600 via R-248 to NQX TACAN then via R-090 to CANIN (NQX R-090/6 DME) and hold.

ATIS * <b>307.025</b>	NAVY KEY WEST APP CON <b>124.025 313.7</b>	NAVY KEY WEST TOWER * <b>118.575 340.25</b>	GND CON <b>121.7 336.45</b>	CLNC DEL <b>121.2 357.4</b>	ASR/PAR
--------------------------	---	--	--------------------------------	--------------------------------	---------

CAUTION: CAT CD intmed seg len 5 NM.

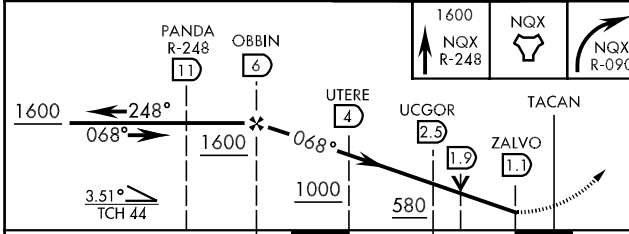
CAUTION: Balloon with strobe light on unmarked cable to 14,000 in R-2916.



SE-3, 07 FEB 2013 to 07 MAR 2013

SE-3, 07 FEB 2013 to 07 MAR 2013

EMERG SAFE ALT 100 NM 15,000



ELEV 6	TDZE 4
--------	--------

CATEGORY	A	B	C	D
S-7 *	360-½ 356 (400-½)		360-¾ 356 (400-¾)	
CIRCLING	440-1 434 (500-1)	500-1 494 (500-1)	500-1½ 494 (500-1½)	560-2 554 (600-2)

