

# TIGAR ONE DEPARTURE (TIGAR1.TIGAR)

SHL-214 [USN]

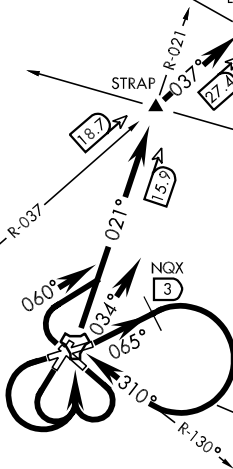
KEY WEST, FLORIDA

ATIS ★ 307.025  
 CLNC DEL  
 121.2 357.4  
 GND CON  
 121.7 336.45  
 NAVY KEY WEST TOWER ★  
 118.575 340.25  
 NAVY KEY WEST DEP CON  
 124.025 313.7

DVALL  
L-23, H-8

CARNU  
L-23, H-8

TIGAR  
L-23

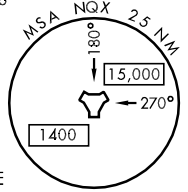


**CAUTION:**  
 Balloon with strobe light  
 on unmarked cable to  
 14,000 in R-2916

KEY WEST  
 113.5 EYW  
 Chan 82

KEY WEST  
 Chan 78 NQX

MARATHON  
 260 MTH



## TACAN REQUIRED

EMERG SAFE ALT 100 NM 15,000

CHART NOT TO SCALE

### DEPARTURE ROUTE DESCRIPTION

TAKE-OFF RWY 3: Climb via heading 034° to intercept NQX TACAN R-021, thence...

TAKE-OFF RWY 21, 25: Climbing left turn direct NQX, thence...

TAKE-OFF RWY 31: Climbing right turn to heading 060° to intercept NQX R-021, thence...

TAKE-OFF RWY 7: Crossing DER climb on heading 065°, passing NQX 3 DME, turn right to intercept R-130 inbound to NQX, thence...

TAKE-OFF RWY 13: Climbing right turn direct NQX, thence...

...via NQX R-021 to STRAP, then via EYW VORTAC R-037 to TIGAR, then via assigned transition or route.

CARNU TRANSITION: via EYW R-037 to CARNU.

DVALL TRANSITION: via EYW R-037 to DVALL.

# TIGAR ONE DEPARTURE (TIGAR1.TIGAR)

KEY WEST, FLORIDA  
KEY WEST NAS (BOCA CHICA FLD) (KNQX)

SE-3, 07 FEB 2013 to 07 MAR 2013

SE-3, 07 FEB 2013 to 07 MAR 2013