

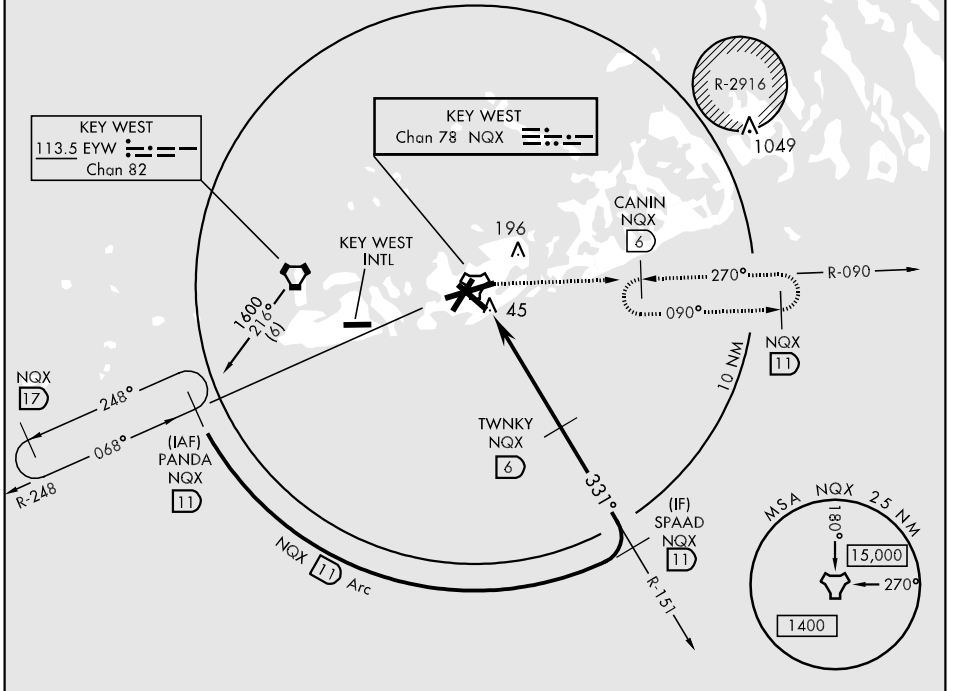
TACAN NQX Chan 78	APCH CRS 331°	Rwy Idg TDZE 7001 4 6	AL-214 [USN]	KEY WEST NAS (BOCA CHICA FLD) (KNQX)
-----------------------------	-------------------------	--------------------------------	--------------	--------------------------------------

ATIS ★ 307.025		NAVY KEY WEST APP CON 124.025 313.7		NAVY KEY WEST TOWER ★ 118.575 340.25		GND CON 121.7 336.45		CLNC DEL 121.2 357.4		ASR/PAR
---------------------------------	--	--	--	---	--	---------------------------------------	--	---------------------------------------	--	----------------

MISSED APPROACH: Climbing right turn to 1600, intercept NQX R-090 to CANIN (NQX R-090/6 DME) and hold.

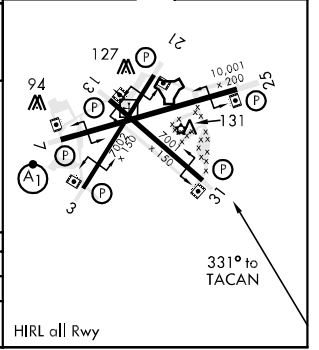
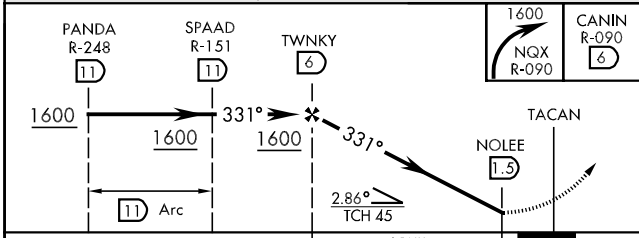
CAUTION: CAT CD intmed seg len 5 NM.

CAUTION: Balloon with strobe light on unmarked cable to 14,000 in R-2916.



EMERG SAFE ALT 100 NM 15,000

ELEV	6	TDZE	4
------	---	------	---



CATEGORY	A	B	C	D
S-31		300-1	296 (300-1)	
CIRCLING	440-1 434 (500-1)	500-1 494 (500-1)	500-1½ 494 (500-1½)	560-2 554 (600-2)

KEY WEST, FLORIDA 24°35'N-81°41'W KEY WEST NAS (BOCA CHICA FLD) (KNQX)

SE-3, 07 FEB 2013 to 07 MAR 2013

SE-3, 07 FEB 2013 to 07 MAR 2013