

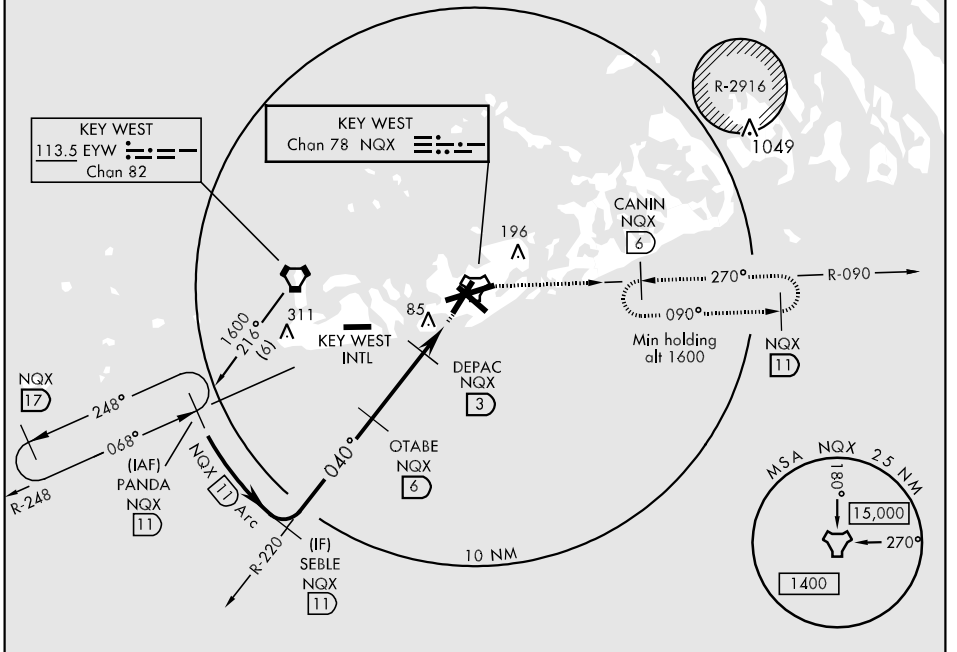
TACAN NQX Chan 78	APCH CRS 040°	Rwy Idg TDZE 7002 4 6	AL-214 [USN]	KEY WEST NAS (BOCA CHICA FLD) (KNQX)
----------------------	------------------	--------------------------------	--------------	--------------------------------------

<p><b>ATIS *</b> 307.025</p>		<p>NAVY KEY WEST APP CON 124.025 313.7</p>		<p>NAVY KEY WEST TOWER * 118.575 340.25</p>		<p>GND CON 121.7 336.45</p>		<p>CLNC DEL 121.2 357.4</p>		<p>ASR/PAR</p>	
----------------------------------	--	--	--	---	--	---------------------------------	--	---------------------------------	--	----------------	--

MISSED APPROACH: Climb to 1600 via R-220 to NQX TACAN then via R-090 to CANIN (NQX R-090/6 DME) and hold.

CAUTION: CAT CD intmed seg len 5 NM.

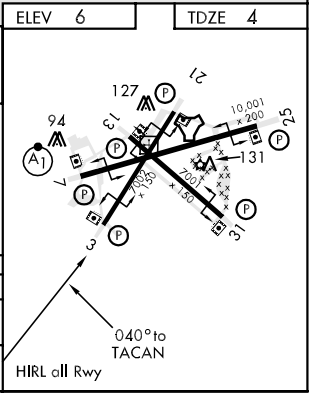
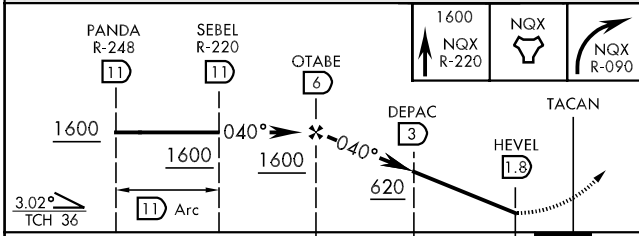
CAUTION: Balloon with strobe light on unmarked cable to 14,000 in R-2916.



SE-3, 07 FEB 2013 to 07 MAR 2013

SE-3, 07 FEB 2013 to 07 MAR 2013

EMERG SAFE ALT 100 NM 15,000



CATEGORY	A	B	C	D
S-3		340-1	336	(400-1)
CIRCLING	440-1 434 (500-1)	500-1 494 (500-1)	500-1½ 494 (500-1½)	560-2 554 (600-2)