

APCH CRS	Rwy Idg	10,001
075°	TDZE	4
	Arpt Elev	6

AL-214 [USN]

KEY WEST NAS (BOCA CHICA FLD) (KNQX)

▼ * When ALS inop, increase vis CAT ABCD to 1 mile.
 ** When ALS inop, increase vis CAT ABC to 1 mile, CAT D to 1/4 miles.
 DME/DME RNP-0.3NA.

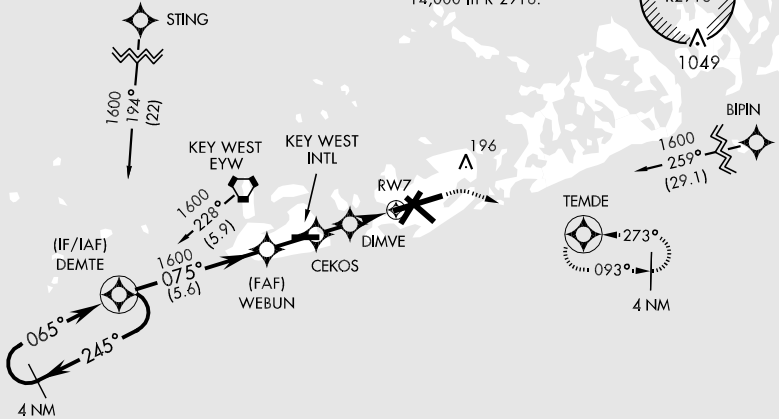


MISSED APPROACH: Climb to 800, then climbing right turn to 1600 direct TEMDE and hold.

ATIS *	NAVY KEY WEST APP CON	NAVY KEY WEST TOWER *	GND CON	CLNC DEL	ASR/PAR
307.025	124.025 313.7	118.575 340.25	121.7 336.45	121.2 357.4	

For uncompensated Baro-VNAV systems, LNAV/VNAV NA below -15°C(5°F) or above 44°C(111°F).

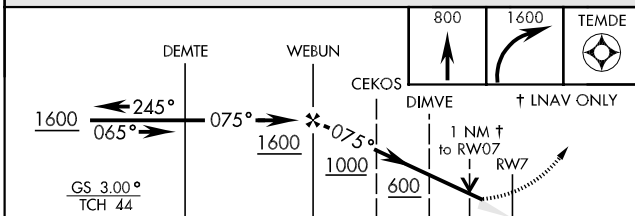
CAUTION: Balloon with strobe light on unmarked cable to 14,000 in R-2916.



SE-3, 07 FEB 2013 to 07 MAR 2013

SE-3, 07 FEB 2013 to 07 MAR 2013

EMERG SAFE ALT 100 NM 15,000



ELEV 6 TDZE 4

CATEGORY	A	B	C	D
LNAV/VNAV DA*	263-1/2	259 (300-1/2)	263-3/4	259 (300-3/4)
LNAV MDA**	360-1/2	356 (400-1/2)	360-3/4	356 (400-3/4)
CIRCLING	440-1 434 (500-1)	500-1 494 (500-1)	500-1 1/2 494 (500-1 1/2)	560-2 554 (600-2)

