

APCH CRS	Rwy Idg	7002
033°	TDZE	4
	Arpt Elev	6

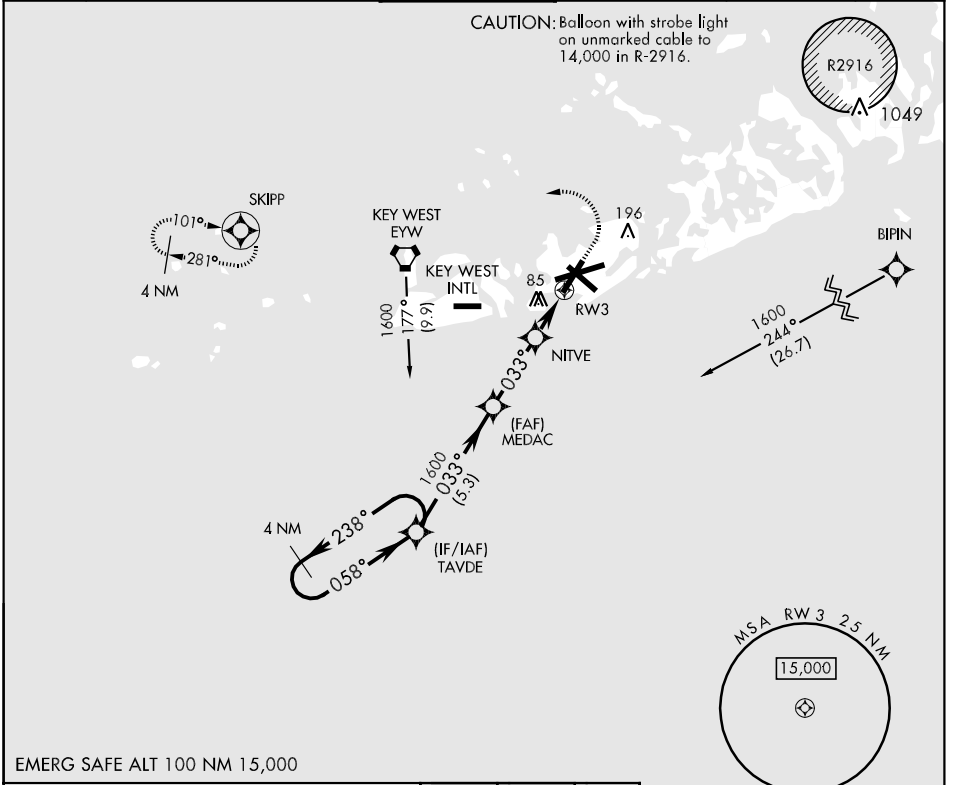
AL-214 [USN] KEY WEST NAS (BOCA CHICA FLD) (KNQX)

▼ DME/DME RNP-0.3 NA.
 For uncompensated Baro-VNAV systems, LNAV/VNAV NA below -15°C (5°F) or above 44°C (111°F).

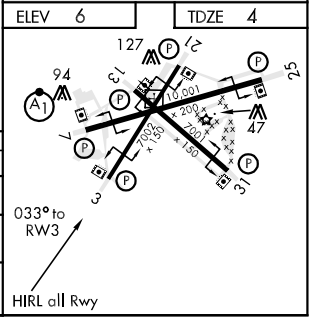
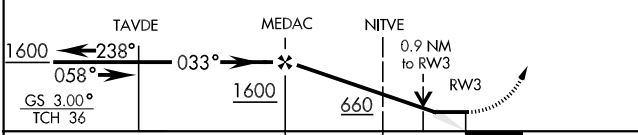
MISSED APPROACH: Climb to 800, then climbing left turn to 2600 direct SKIPP and hold.

ATIS *	NAVY KEY WEST APP CON	NAVY KEY WEST TOWER *	GND CON	CLNC DEL	ASR/PAR
307.025	124.025 313.7	118.575 340.25	121.7 336.45	121.2 357.4	

CAUTION: Balloon with strobe light on unmarked cable to 14,000 in R-2916.



EMERG SAFE ALT 100 NM 15,000



CATEGORY	A	B	C	D
LNAV MDA	263-1	259	(300-1)	
LNAV/VNAV DA	340-1	336	(400-1)	
CIRCLING	440-1	500-1	500-1½	560-2
	434 (500-1)	494 (500-1)	494 (500-1½)	554 (600-2)

KEY WEST, FLORIDA 24°35'N-81°41'W KEY WEST NAS (BOCA CHICA FLD) (KNQX)

Amdt 1 12096

SE-3, 07 FEB 2013 to 07 MAR 2013

SE-3, 07 FEB 2013 to 07 MAR 2013