

KEY WEST, FLORIDA

# RNAV (GPS) RWY 13

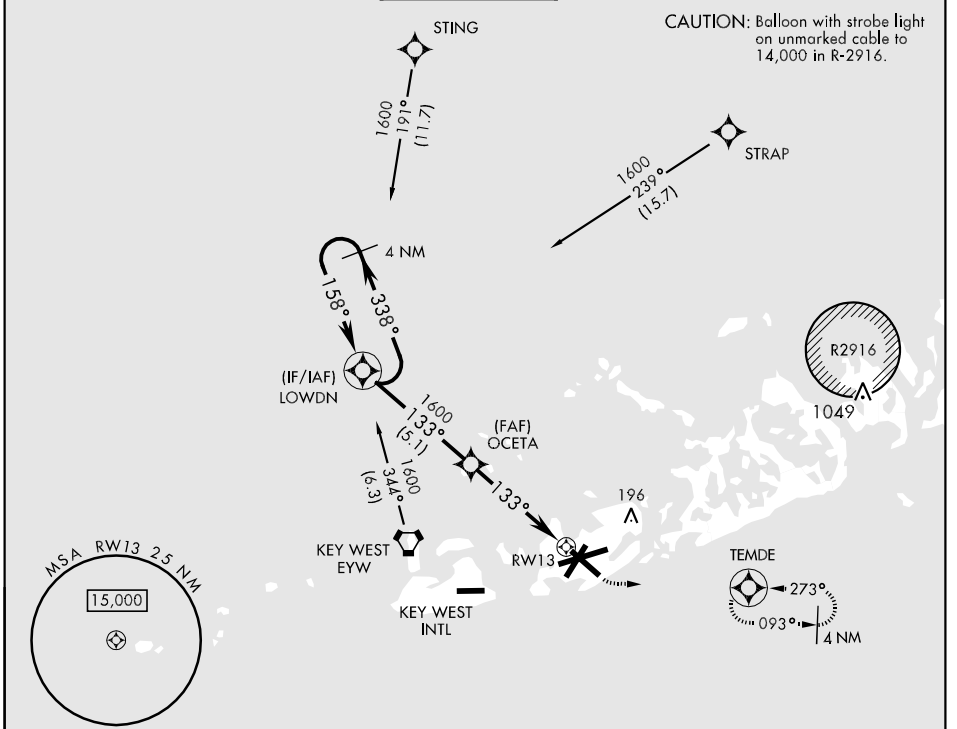
APCH CRS <b>133°</b>	Rwy Idg TDZE Arprt Elev	<b>7001</b> <b>4</b> <b>6</b>
-------------------------	-------------------------------	-------------------------------------

AL-214 [USN]

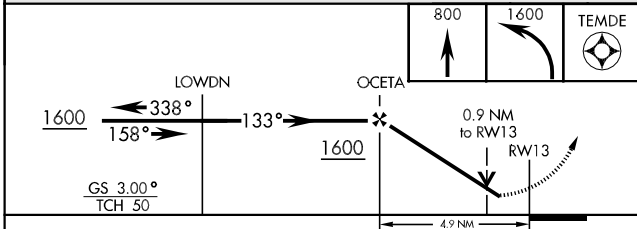
KEY WEST NAS (BOCA CHICA FLD) (KNQX)

<p><b>▼</b> DME/DME RNP-0.3 NA. For uncompensated Baro-VNAV systems, LNAV/VNAV NA below -15°C(5°F) or above 43°C(111°F).</p>	<p>MISSED APPROACH: Climb to 800, then climbing left turn to 1600 direct TEMDE and hold.</p>
--	--

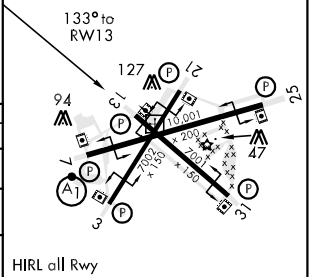
<p>ATIS ★ <b>307.025</b></p>	<p>NAVY KEY WEST APP CON <b>124.025 313.7</b></p>	<p>NAVY KEY WEST TOWER ★ <b>118.575 340.25</b></p>	<p>GND CON <b>121.7 336.45</b></p>	<p>CLNC DEL <b>121.2 357.4</b></p>	<p>ASR/PAR</p>
----------------------------------	---	--	--	--	----------------



EMERG SAFE ALT 100 NM 15,000



ELEV 6	TDZE 4
--------	--------



CATEGORY	A	B	C	D
LNAV/VNAV DA	288-1		284	(300-1)
LNAV MDA	380-1	376	(400-1)	380-1¼ 376 (400-1¼)
CIRCLING	440-1 434 (500-1)	500-1 494 (500-1)	500-1½ 494 (500-1½)	560-2 554 (600-2)

HIRL all Rwy

KEY WEST, FLORIDA  
Amdt 3 12096

24°35'N-81°41'W KEY WEST NAS (BOCA CHICA FLD) (KNQX)

# RNAV (GPS) RWY 13

SE-3, 07 FEB 2013 to 07 MAR 2013

SE-3, 07 FEB 2013 to 07 MAR 2013