

TACAN	NQX	APCH CRS	Rwy Idg	10,001
Chan	78	068°	TDZE	4
			Arpt Elev	6

JAL-214 [USN] KEY WEST NAS (BOCA CHICA FLD) (KNQX)

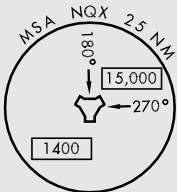
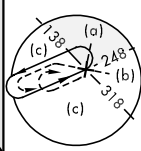
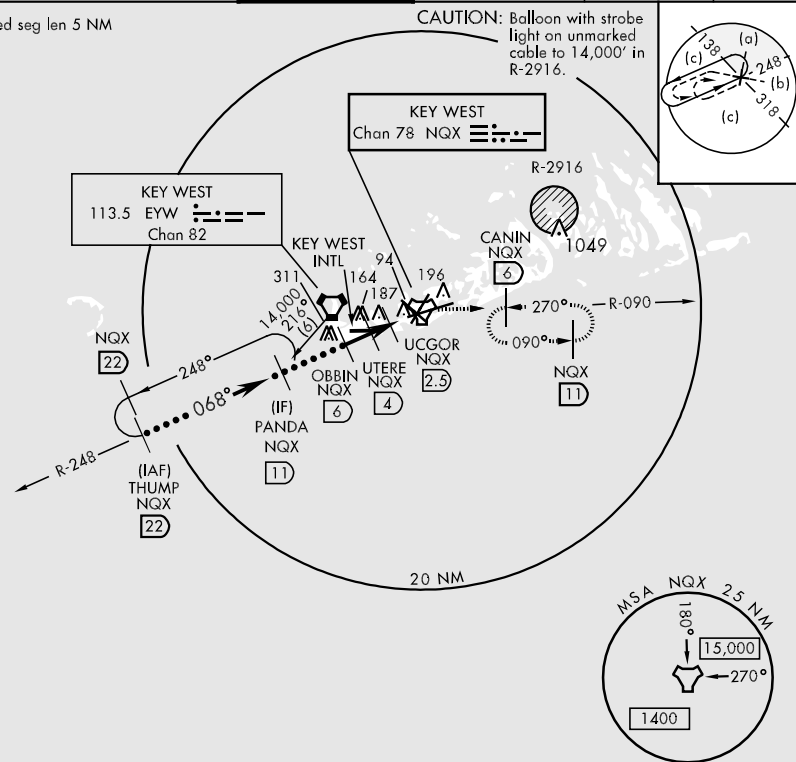
⚠ * When ALS inop, increase vis CAT C to 1 mile, CAT DE to 1½ miles.

ALSF-1 MISSED APPROACH: Climb to 1600 via R-248 to NQX TACAN then via R-090 to CANIN (NQX R-090/6 DME) and hold.

ATIS *	NAVY KEY WEST APP CON	NAVY KEY WEST TOWER *	GND CON	CLNC DEL	ASR/PAR
307.025	124.025 313.7	118.575 340.25	121.7 336.45	121.2 357.4	

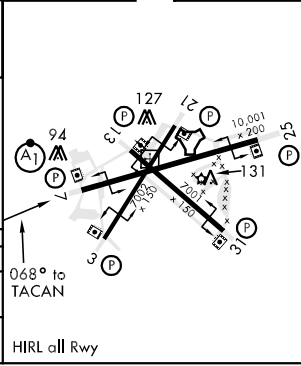
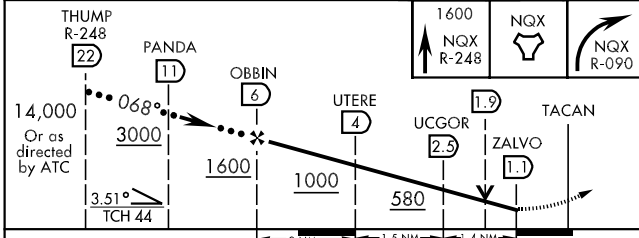
CAUTION: Intmed seg len 5 NM

CAUTION: Balloon with strobe light on unmarked cable to 14,000' in R-2916.



EMERG SAFE ALT 100 NM 15,000

ELEV	6	TDZE	4
------	---	------	---



CATEGORY	C	D	E
S-7 *	360-¾	356	(400-¾)
CIRCLING	500-1½ 494 (500-1½)	560-2	554 (600-2)

KEY WEST, FLORIDA 24°35'N-81°41'W KEY WEST NAS (BOCA CHICA FLD) (KNQX)

Amdt 1 12096

SE-3, 07 FEB 2013 to 07 MAR 2013

SE-3, 07 FEB 2013 to 07 MAR 2013