

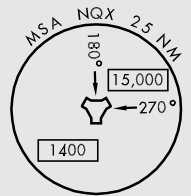
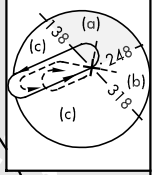
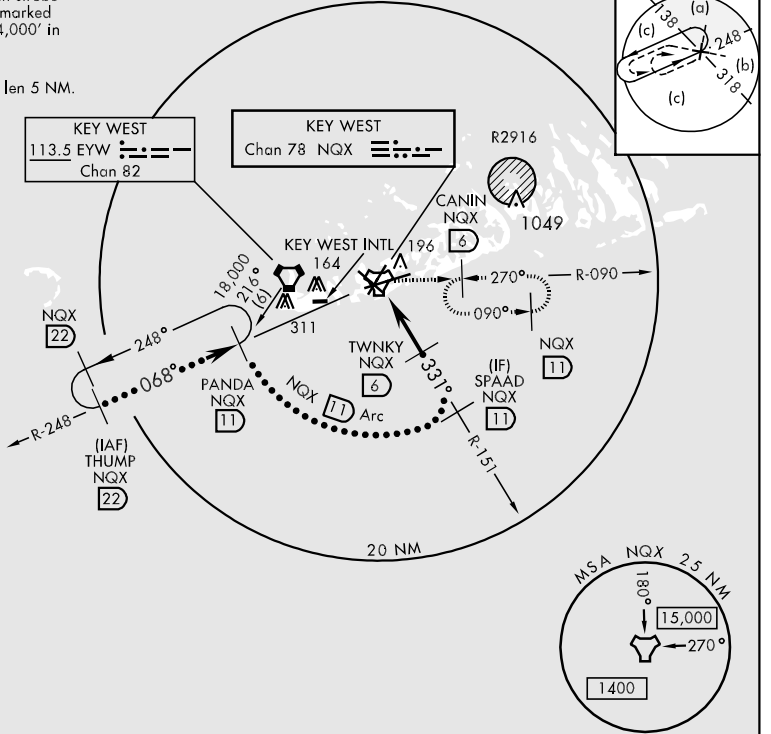
TACAN NQX Chan <b>78</b>	APCH CRS <b>331°</b>	Rwy Idg TDZE <b>4</b> Arpt Elev <b>6</b>	JAL-214 [USN]	KEY WEST NAS (BOCA CHICA FLD) (KNQX)
--------------------------	----------------------	---	---------------	--------------------------------------

MISSSED APPROACH: Climbing right turn to 1600 to intercept NQX R-090 to CANIN (NQX R-090/6 DME) and hold.

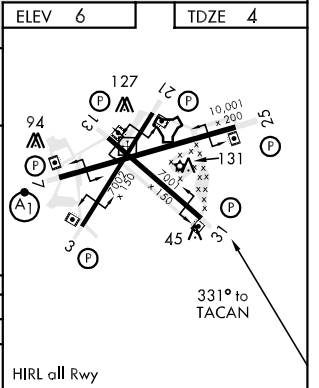
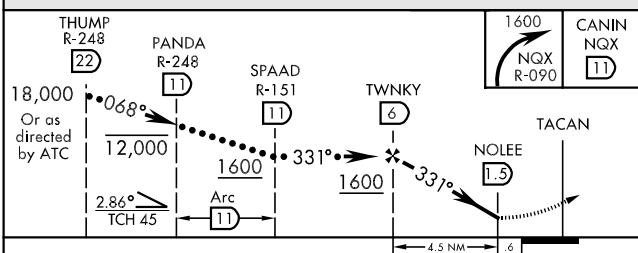
ATIS ★ <b>307.025</b>	NAVY KEY WEST APP CON <b>124.025 313.7</b>	NAVY KEY WEST TOWER ★ <b>118.575 340.25</b>	GND CON <b>121.7 336.45</b>	CLNC DEL <b>121.2 357.4</b>	ASR/PAR
-----------------------	--	---	-----------------------------	-----------------------------	---------

CAUTION: Balloon with strobe light on unmarked cable to 14,000' in R-2916.

CAUTION: Intmed seg len 5 NM.



EMERG SAFE ALT 100 NM 15,000



CATEGORY	C	D	E
S-31	300-1	296	(300-1)
CIRCLING	500-1½ 494 (500-1½)	560-2	554 (600-2)

SE-3, 07 FEB 2013 to 07 MAR 2013

SE-3, 07 FEB 2013 to 07 MAR 2013