

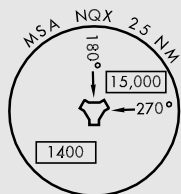
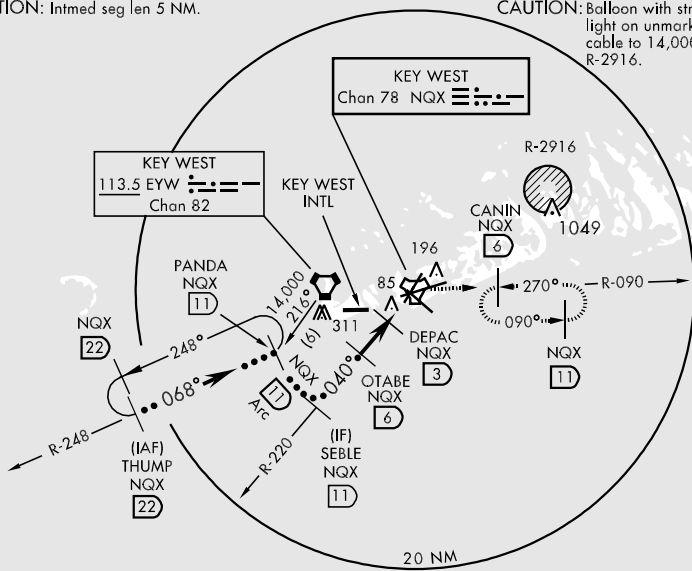
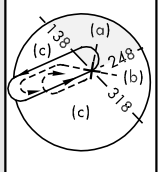
TACAN NQX Chan 78	APCH CRS 040°	Rwy Idg TDZE 7002 4 6	JAL-214 [USN]	KEY WEST NAS (BOCA CHICA FLD) (KNQX)
----------------------	------------------	--------------------------------	---------------	--------------------------------------

**MISSED APPROACH:** Climb to 1600 via R-220 to NQX TACAN then via R-090 to CANIN (NQX R-090/6 DME) and hold.

ATIS ★ 307.025	NAVY KEY WEST APP CON 124.025 313.7	NAVY KEY WEST TOWER ★ 118.575 340.25	GND CON 121.7 336.45	CLNC DEL 121.2 357.4	ASR/PAR
-------------------	--	---	-------------------------	-------------------------	---------

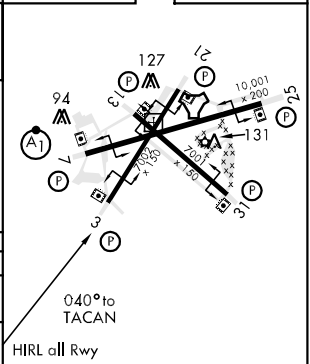
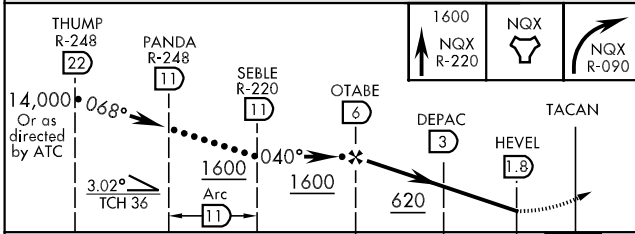
CAUTION: Intmed seg len 5 NM.

CAUTION: Balloon with strobe light on unmarked cable to 14,000' in R-2916.



EMERG SAFE ALT 100 NM 15,000

ELEV 6	TDZE 4
--------	--------



CATEGORY	C	D	E
S-3	340-1	336 (400-1)	340-1½ 336 (400-1½)
CIRCLING	500-1½ 494 (500-1½)	560-2	554 (600-2)

SE-3, 07 FEB 2013 to 07 MAR 2013

SE-3, 07 FEB 2013 to 07 MAR 2013