

ATIS  
120.75  
CLNC DEL  
121.9

ST JOSEPH  
115.5 STJ  
Chan 102

SALINA  
117.1 SLN  
Chan 118  
N38°55.51' W97°37.28'  
L-10, H-5

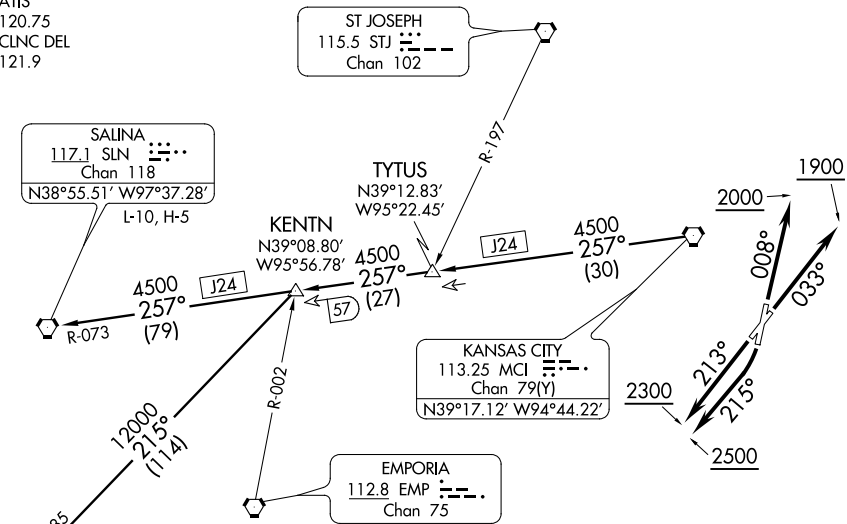
TYTUS  
N39°12.83'  
W95°22.45'

KENTN  
N39°08.80'  
W95°56.78'

KANSAS CITY  
113.25 MCI  
Chan 79(Y)  
N39°17.12' W94°44.22'

EMPORIA  
112.8 EMP  
Chan 75

WICHITA  
113.8 ICT  
Chan 85  
N37°44.72' W97°35.03'  
L-10-15, H-5



NOTE: RADAR required.

TAKEOFF MINIMUMS:

- Rwy 3: Standard
- Rwy 1: 400-2 1/4 or standard with minimum climb of 307' per NM to 1100.
- Rwy 19: Standard with minimum climb of 400' per NM to 2500.
- Rwy 21: Standard with minimum climb of 251' per NM to 1700.

NOTE: Chart not to scale

**DEPARTURE ROUTE DESCRIPTION**

- TAKEOFF RWY 1: Climb heading 008° to 2000, thence. . .
- TAKEOFF RWY 3: Climb heading 033° to 1900, thence. . .
- TAKEOFF RWY 19: Climbing right turn heading 215° to 2500, thence. . .
- TAKEOFF RWY 21: Climb heading 213° to 2300, thence. . .

. . . Fly assigned heading and altitude for vector to appropriate route. Expect filed altitude 10 minutes after departure.

- KENTN TRANSITION (WLDCT3.KENTN): From over MCI VORTAC on MCI R-257 to KENTN INT.
- SALINA TRANSITION (WLDCT3.SLN): From over MCI VORTAC on MCI R-257 and SLN R-073 to SLN VORTAC.
- WICHITA TRANSITION (WLDCT3.ICT): From over MCI VORTAC on MCI R-257 to KENTN INT, then on ICT R-035 to ICT VORTAC.

NC-3, 07 FEB 2013 to 07 MAR 2013

NC-3, 07 FEB 2013 to 07 MAR 2013